

0CNP1-M97600EN

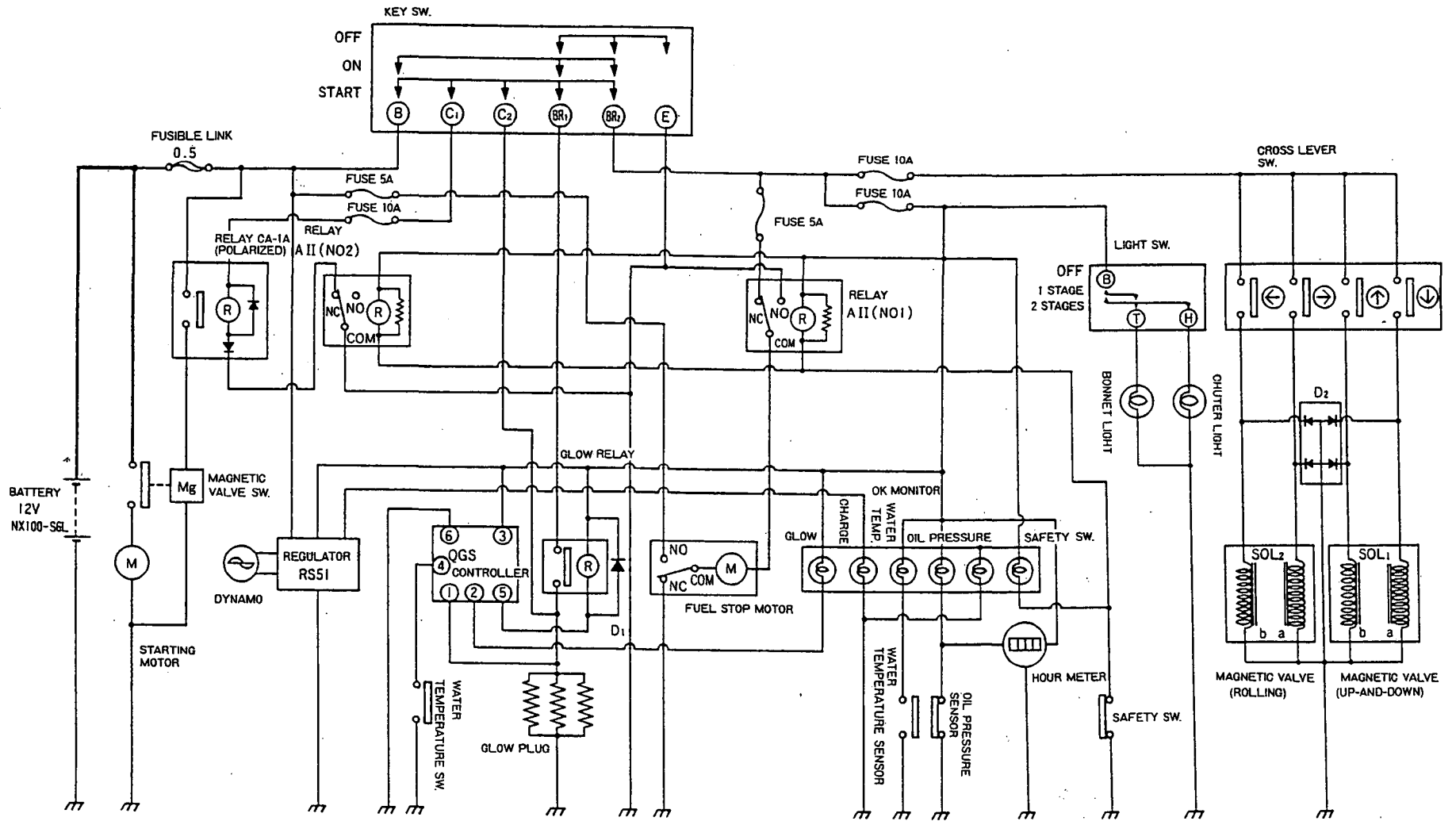
SPECIFICATIONS

Item		Model	YSR1300DX	YSR1600DX	Remarks	
Machine dimensions	Overall length	(mm)	2150			
	Overall width	(mm)	1100			
	Overall height	(mm)	2025		Operating posture (Standard position)	
Machine weight		(kg)	540	545		
Engine	Model		3TN63-U0S	3TN66-U0S		
			Vertical, direct, water-cooled & 4cycles diesel			
	Displacement	(ℓ)	0.6	0.658		
	Max. output	(PS/r.p.m.)	13/3000	16/3100		
	Starting system		Electric motor starter			
Battery (capacity 5HR)		(V/Ah)	12/36		NX100-S6L	
Traveling unit	Track face width × crawler bearing length		(mm)	250×747	270×747	
	Traveling transmission		Ring cone stepless change + spur gear sliding interlock type			
	Change stages		Stepless			
Snow removing section	Snow removing device		2 ribbon screws type			
	Auger outer diameter		(mm)	500		
	Blower outer diameter		(mm)	455		
	Chute turn. angle		(degrees)	220 (110 each right and left)		
Snow removing ability	Snow removing width		(mm)	1100		
	Snow removing height		(mm)	750		
	Snow removing ability		(t/h)	80		Specific gravity 0.2
	Snow casting distance		(m)	20		Specific gravity 0.2
Oil pressure device	Hydraulic pump model		Gear type			
	Relief valve set pressure		(kg/cm ²)	60		
	Cylinder model	Ascent & descent		Double-acting cylinder		The vertical movement of snow removing section
		Rolling				The rolling of snow removing section
Control valve model		Ascent & descent rolling	Magnetic valve (4 ports & 3 ways)			

NOTE : Given specifications may be altered for improvement, etc. without prior notice.

WIRING DIAGRAM

<YSR1300DX·YSR1600DX>



Contents

Fig. No.	Fig. Name	Fig. No.	Fig. Name
PULLEY & TENSION UNIT		21.	TRAVELING CLUTCH
1.	ENGINE(3TN63)	22.	CONTROL PANEL
2.	RADIATOR	23.	PANEL SIDE BOARD
3.	FUEL TANK	24.	AUGER CLUTCH
4.	ENGINE STAND	25.	ACCELERATOR LEVER
5.	BELT TRANSMISSION	26.	CHUTE LEVER
TRAVELING TRANSMISSION UNIT		27.	CHUTE HANDLE
6.	MAIN SHAFT	28.	CHASSIS
7.	2ND SHAFT	29.	TRACK FRAME
8.	3RD SHAFT	30.	CRAWLER
9.	FINAL SHAFT	31.	SPROCKET
10.	TRANSMISSION CASE	32.	IDLER(UW)
11.	FORK SHAFT	33.	TRACK ROLLER
12.	SIDE CLUTCH TIP LEVER	HYDRAULIC UNIT	
13.	STEPLESS CHANGE GEAR	34.	ACTUATOR
14.	R C INPUT SHAFT	35.	HYDRAULIC PIPING
CONTROL & TRAVELING UNIT		ELECTRICAL PARTS UNIT	
15.	TRAVELING TENSION	36.	ELECTRICAL PARTS
16.	AUGER TENSION	OUTFIT SECTION	
17.	SIDE CLUTCH CONTROL	37.	BONNET KEEL
18.	CHANGE LEVER	38.	BONNET L
19.	HANDLE	39.	BONNET R
20.	BACK STOPPER		

Contents

Fig. No. Fig. Name

40. BONNET

41. LABELS

SNOW REMOVING UNIT

42. SNOW REMOVING INSTALLING

ACCESSORIES UNIT

43. TOOLS

44. ACCESSORIES

SNOW REMOVING UNIT

45. SNOW REMOVING FRAME

46. CHUTE

47. AUGER GEAR CASE

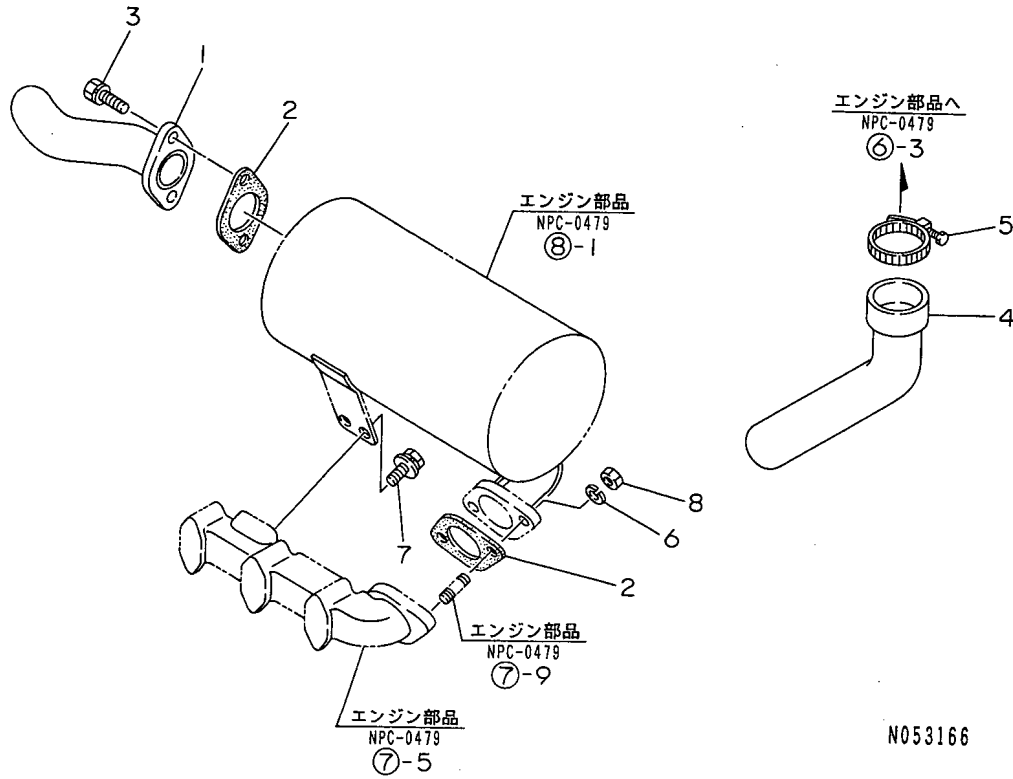
48. AUGER

49. LABELS

Fig. No. Fig. Name

Fig.1. ENGINE(3TN63)

1. ENGINE(3TN63)



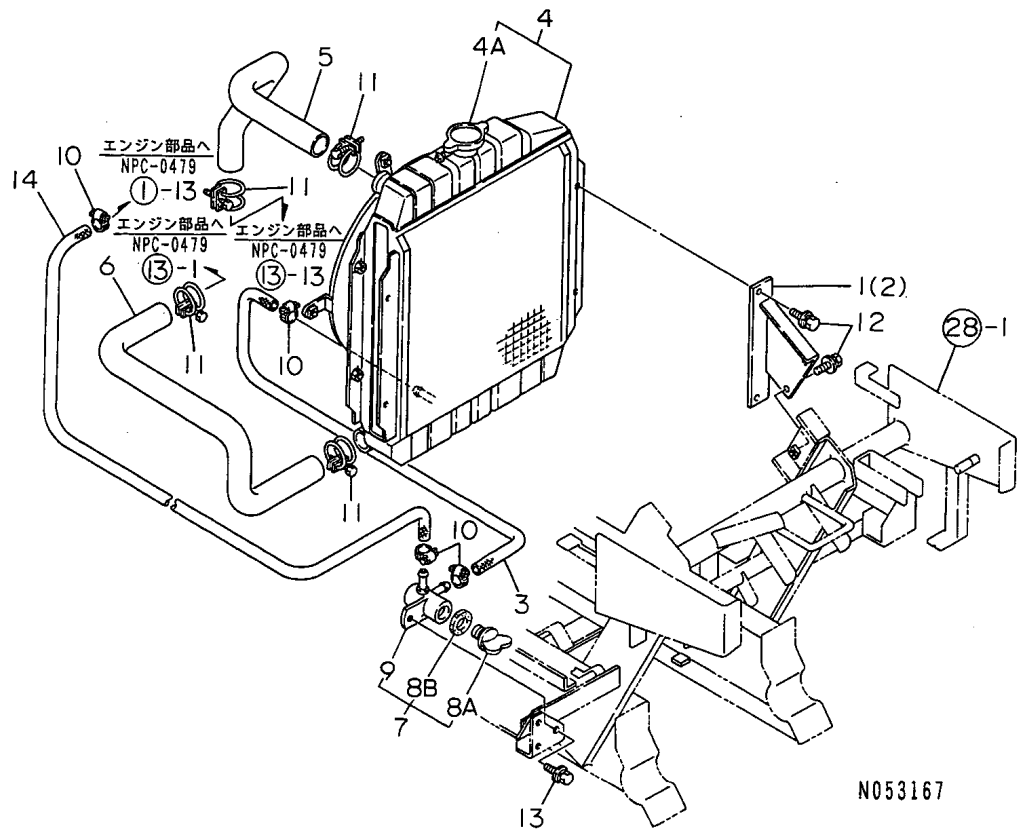
(A)=YSR1300DX
(B)=YSR1600DX
(C)=

(D)=
(E)=
(F)=

No.	Lev.	Parts No.	Description	Q'ty						I	R
				(A)	(B)	(C)	(D)	(E)	(F)		
1	1	1N1910-00100	PIPE	1	1						
2	1	1N1910-00510	PACKING	2	2						
3	1	26013-080252	BOLT, M8X 25	2	2						
4	1	1E6570-04300	PIPE, IN. SUC. CONNECT.	1	1						
5	1	23000-060000	CLAMP, 60	1	1						
6	1	22217-080000	WASHER, SPRING 8	2	2						
7	1	26018-080162	BOLT, M8X 16	2	2						
8	1	26717-080002	NUT, M8	2	2						

Fig.2. RADIATOR

2. RADIATOR



N053167

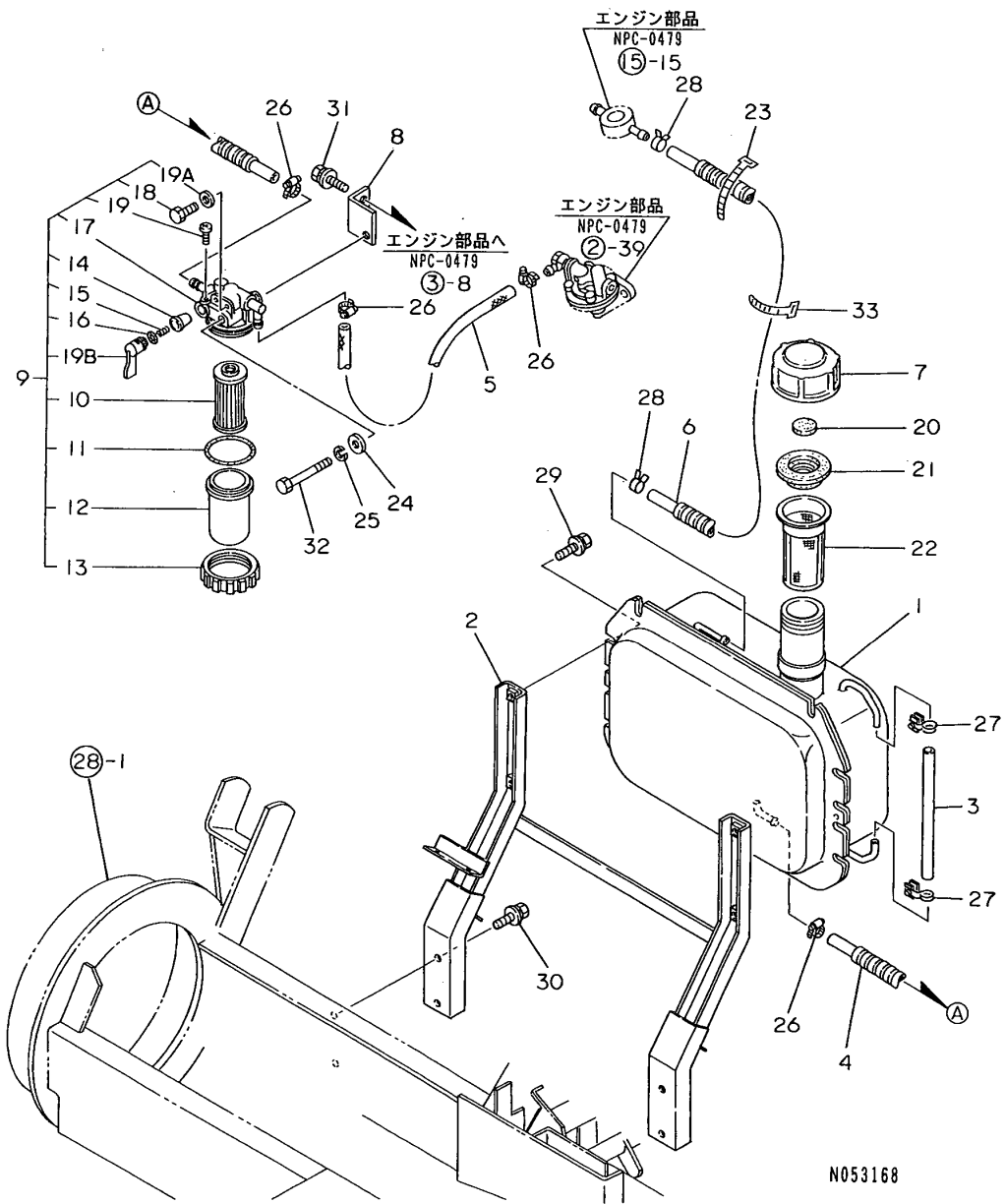
(A)=YSR1300DX
(B)=YSR1600DX
(C)=

(D)=
(E)=
(F)=

No.	Lev.	Parts No.	Description	Q'ty						I	R
				(A)	(B)	(C)	(D)	(E)	(F)		
1	1	1N1910-02210	BRACKET R,RADIATOR	1	1						
2	1	1N1910-02260	BRACKET L,RADIATOR	1	1						
3	1	1E6460-03421	HOSE C,FUEL	1	1						
4	1	119260-44500	RADIATOR	1	1						
4A	2	123682-44210	CAP, RADIATOR	1	1						
5	1	119288-49010	PIPE, WATER	1	1						
6	1	119280-49020	PIPE, WATER	1	1						
7	1	129150-49100	COCK ASSY, 3-WAY	1	1						
8A	2	119629-49070	COCK, DRAIN	1	1						
8B	2	119629-49080	GASKET	1	1						
9	2	129150-49090	BODY, 3-WAY COCK	1	1						
10	1	23000-013000	CLAMP, 13	4	4						
11	1	23010-038000	CLAMP, 38	4	4						
12	1	26018-080164	BOLT M 8X 16	8	8						
13	1	26018-080164	BOLT M 8X 16	1	1						
14	1	1E6770-03210	HOSE, FUEL 720	1	1						

Fig.3. FUEL TANK

3. FUEL TANK



N053168

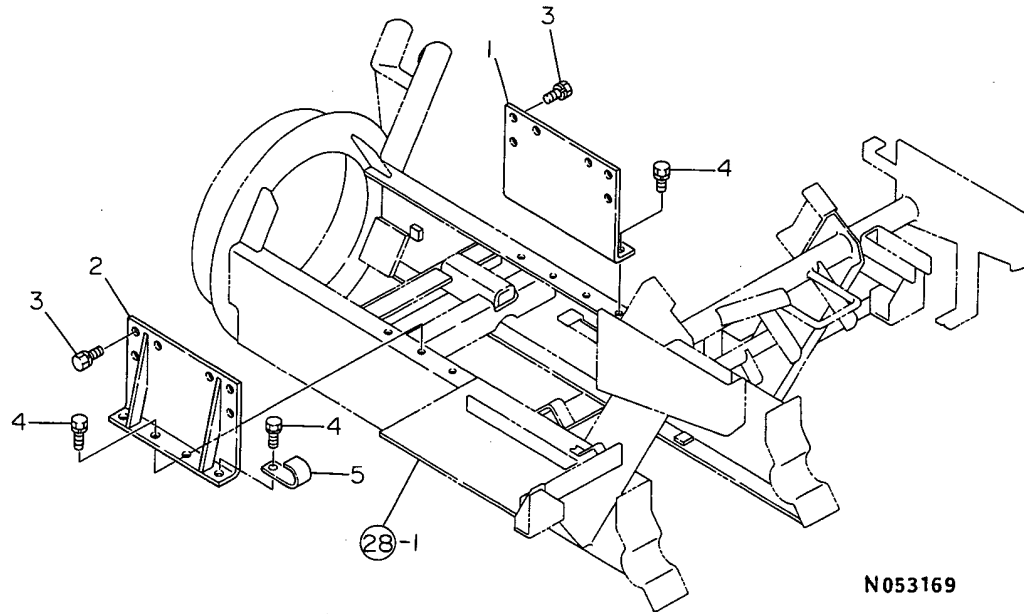
(A)=YSR1300DX
(B)=YSR1600DX
(C)=

(D)=
(E)=
(F)=

No.	Lev.	Parts No.	Description	Q'ty						I	R
				(A)	(B)	(C)	(D)	(E)	(F)		
1	1	1N1910-03010	TANK COMP.,FUEL	1	1						
2	1	1N1910-03110	STAY COMP.,FUEL TANK	1	1						
3	1	1E6570-03170	PIPE, OIL LEVEL	1	1						
4	1	1N1910-03200	HOSE A COMP.,FUEL	1	1						
5	1	1N1910-03222	HOSE B,FUEL	1	1						
6	1	1N1910-03260	PIPE,FUEL RETURN	1	1						
7	1	1E6460-03310	CAP, FUEL	1	1						
8	1	1N1910-03310	STAY,FUEL FILTER	1	1						
9	1	105312-55600	STRAINER ASSY, FUEL	1	1						
10	2	104500-55710	ELEMENT	1	1						
11	2	102103-55520	O-RING	1	1						
12	2	124064-55510	COVER	1	1						
13	2	110250-55610	RING, RETAINING	1	1						
14	2	104200-55321	VALVE, TAPER	1	1						
15	2	104200-55330	SPRING, VALVE	1	1						
16	2	24311-240100	O-RING, 1AP10A	1	1						
17	2	105312-55700	BODY CMP,FUEL FILTER	1	1						
18	2	101720-55750	PLUG, 6	2	2						
19	2	104200-55750	SCREW, M4	1	1						
19A	2	23418-060000	GASKET, 6X1.0	2	2						
19B	2	104200-55341	HANDLE	1	1						
20	1	1A1120-61531	PACKING,FUEL CAP	1	1						
21	1	1A1120-61541	SEAL, RUBBER	1	1						
22	1	1E6070-81360	FILTER	1	1						
23	1	1E6102-84960	BAND 250,WIRE LOCK	1	1						
24	1	22137-080000	WASHER, 8	1	1						
25	1	22217-080000	WASHER, SPRING 8	1	1						
26	1	23000-013000	CLAMP, 13	4	4						
27	1	23010-011000	CLAMP, 11	2	2						
28	1	23080-008000	CLAMP, 8	2	2						
29	1	26018-080204	BOLT M 8X 20	4	4						
30	1	26018-080204	BOLT M 8X 20	4	4						
31	1	26018-080204	BOLT M 8X 20	1	1						
32	1	26117-080702	BOLT, M8X 70 PLATED	1	1						
33	1	1E6102-84970	BAND 140,WIRE LOCK	1	1						

Fig.4. ENGINE STAND

4 . ENGINE STAND



N053169

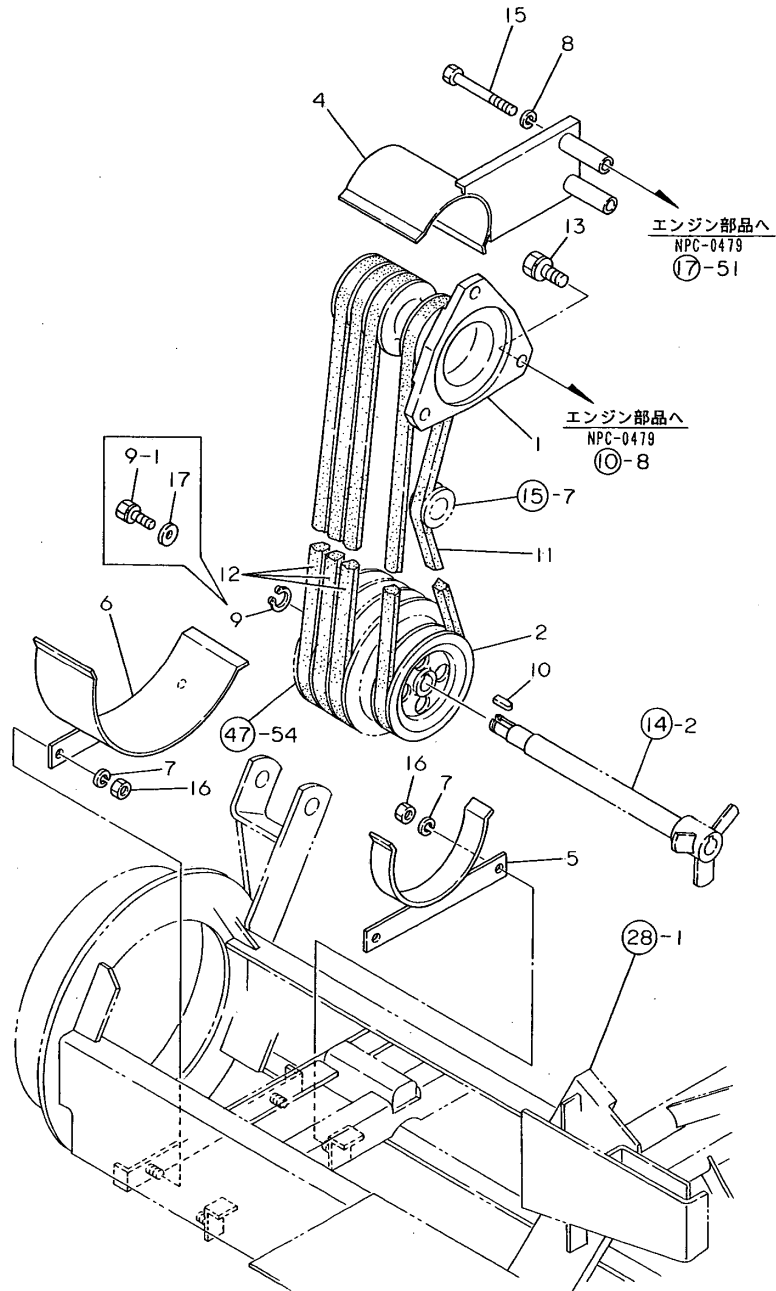
(A)=YSR1300DX
(B)=YSR1600DX
(C)=

(D)=
(E)=
(F)=

No.	Lev.	Parts No.	Description	Q'ty						I	R
				(A)	(B)	(C)	(D)	(E)	(F)		
1	1	1N1910-05100	BASE R,ENGINE	1	1						
2	1	1N1910-05150	BASE L,ENGINE	1	1						
3	1	26013-100202	BOLT, M10X 20	12	12						
4	1	26013-100202	BOLT, M10X 20	8	8						
5	1	1A1180-59520	CLAMP B,CORD	1	1						

Fig.5. BELT TRANSMISSION

5. BELT TRANSMISSION



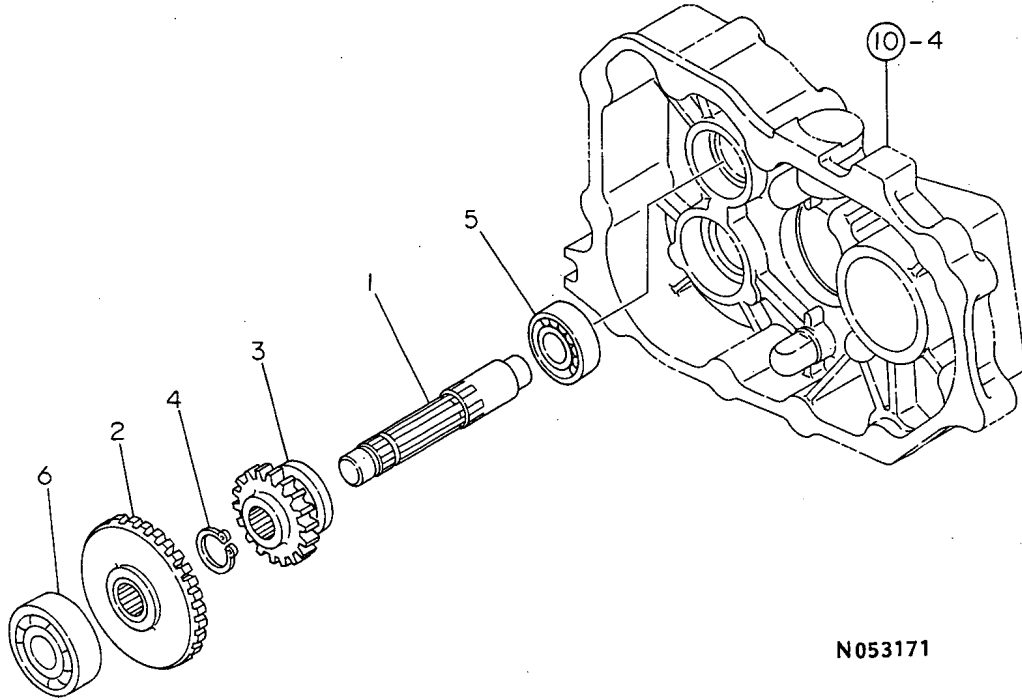
(A)=YSR1300DX
(B)=YSR1600DX
(C)=

(D)=
(E)=
(F)=

No.	Lev.	Parts No.	Description	Q'ty						I	R
				(A)	(B)	(C)	(D)	(E)	(F)		
1	1	1N1910-12010	PULLEY 85,ENGINE	1	1						
2	1	1N1910-12110		1	1						
4	1	1N1910-12250	RETAINER,BELT	1	1						
5	1	1N1910-12300	RETAINER A,BELT	1	1						
6	1	1N1910-12350	BRACKET B,BELT	1	1						
7	1	22217-080000	WASHER, SPRING 8	4	4						
8	1	22217-080000	WASHER, SPRING 8	2	2						
9	1	22242-000170	RING, 17	1	1						
9-1	1	26013-080202	BOLT, M8X 20	1	1						S
		(A=F710001)	(B=F710001)								
10	1	22550-050150	KEY 5X15	1	1						
11	1	25123-003201	V-BELT, B32H	1	1						
12	1	1N1910-12160	V-BELT	3	3						
13	1	26013-120252	BOLT, M12X 25	3	3						
15	1	26117-080802	BOLT, M8X 80 PLATED	2	2						
16	1	26717-080002	NUT, M8	4	4						
17	1	1E6070-41040	WASHER 8.5X24.5X2.3	1	1						W
		(A=F710001)	(B=F710001)								

Fig.6. MAIN SHAFT

6 . MAIN SHAFT



N053171

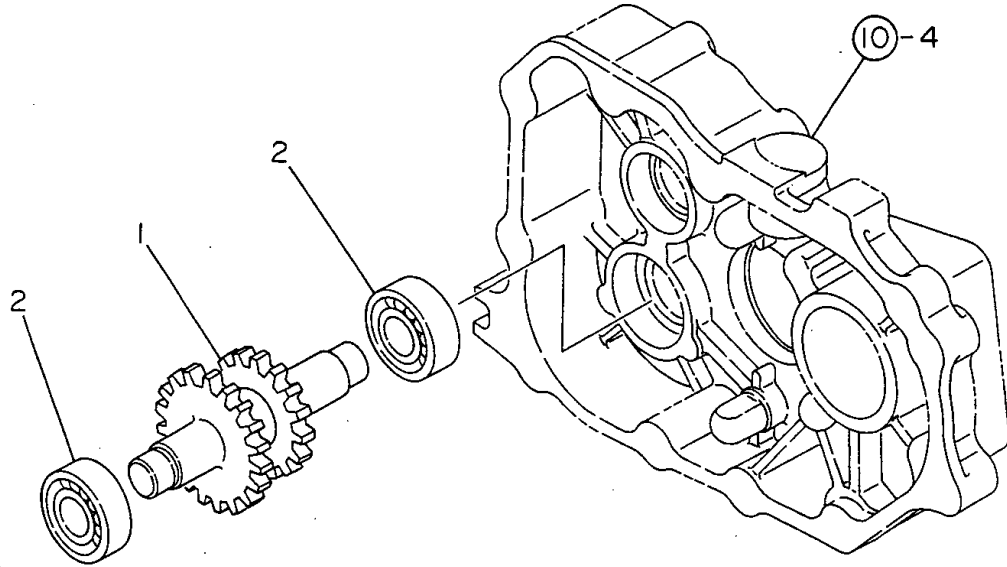
(A)=YSR1300DX
(B)=YSR1600DX
(C)=

(D)=
(E)=
(F)=

No.	Lev.	Parts No.	Description	Q'ty						I	R
				(A)	(B)	(C)	(D)	(E)	(F)		
1	1	1N1910-21010	SHAFT,MAIN	1	1						
2	1	1N1910-21020	GEAR 31,BEVEL	1	1						
3	1	1N1910-21030	GEAR 18,MAIN SHAFT	1	1						
4	1	22242-000220	RING, 22	1	1						
5	1	24101-062024	BEARING, BALL 6202	1	1						
6	1	24101-063034	BEARING, BALL 6303	1	1						

Fig.7. 2ND SHAFT

7. 2nd SHAFT



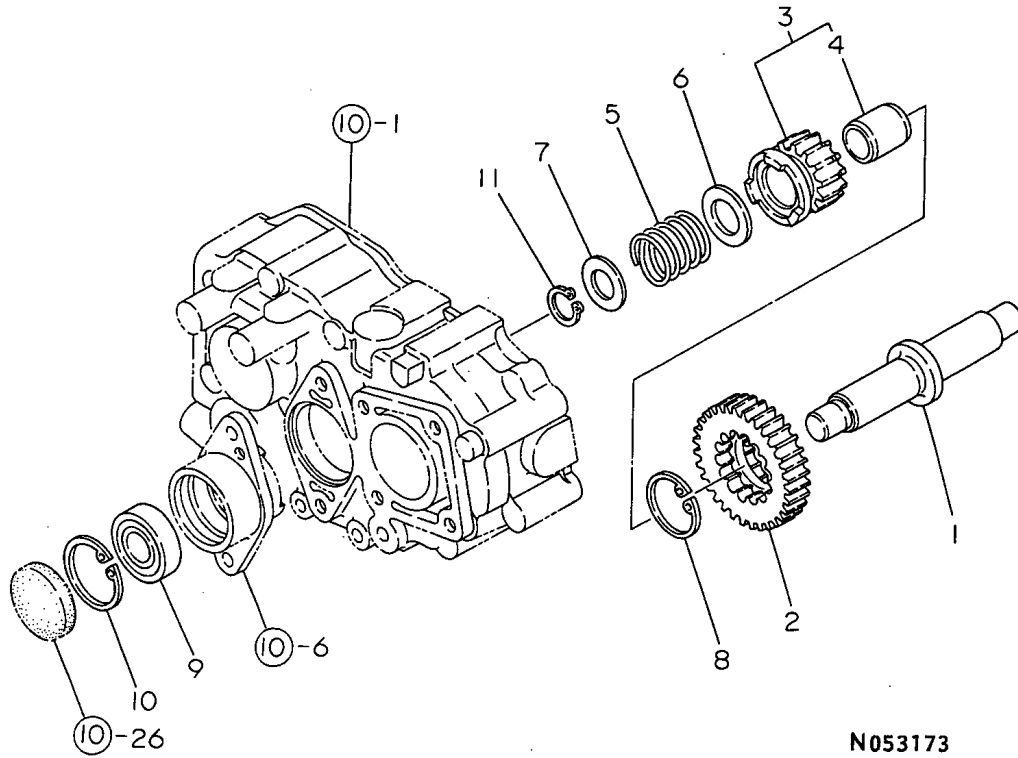
(A)=YSR1300DX
(B)=YSR1600DX
(C)=

(D)=
(E)=
(F)=

No.	Lev.	Parts No.	Description	Q'ty						I	R
				(A)	(B)	(C)	(D)	(E)	(F)		
1	1	1N1910-21100	SHAFT COMP.,2ND	1	1						
2	1	24101-062034	BEARING, BALL 6203	2	2						

Fig.8. 3RD SHAFT

8 . 3rd SHAFT



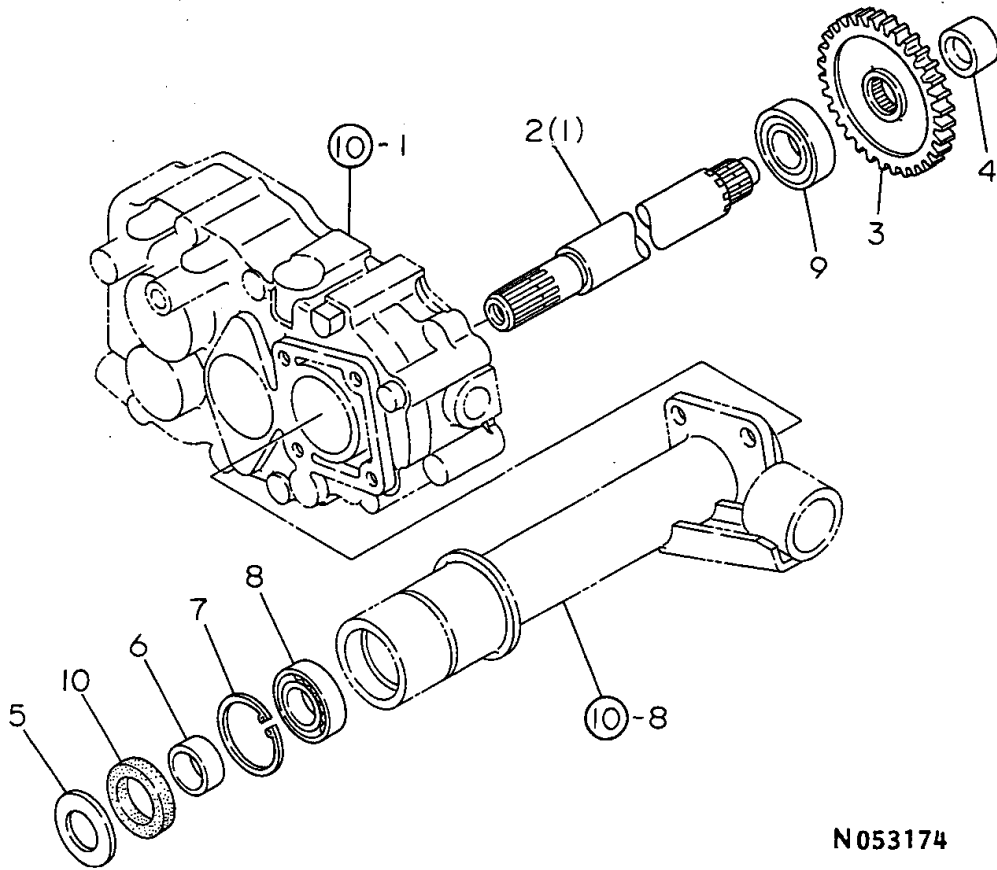
(A)=YSR1300DX
(B)=YSR1600DX
(C)=

(D)=
(E)=
(F)=

No.	Lev.	Parts No.	Description	Q'ty						I	R
				(A)	(B)	(C)	(D)	(E)	(F)		
1	1	1N1910-21200	SHAFT,3RD	1	1						
2	1	1N1910-21210	GEAR 32,3RD SHAFT	1	1						
3	1	1N1910-21220	GEAR COMP.,SD.CLUTCH	2	2						
4	2	1N1740-21260	METAL 25X28X30	2	2						
5	1	1N1910-21240	SPRING,SIDE CLUTCH	2	2						
6	1	192110-24031	LINER, SHAFT 25	2	2						
7	1	192010-24160	LINER, SHAFT 20	2	2						
8	1	22252-000421	CIRCLIP 42	2	2						
9	1	24101-062044	BEARING, BALL 6204	2	2						
10	1	22252-000471	RING, 47	2	2						
11	1	22242-000200	RING, 20	2	2						

Fig.9. FINAL SHAFT

9. FINAL SHAFT



N053174

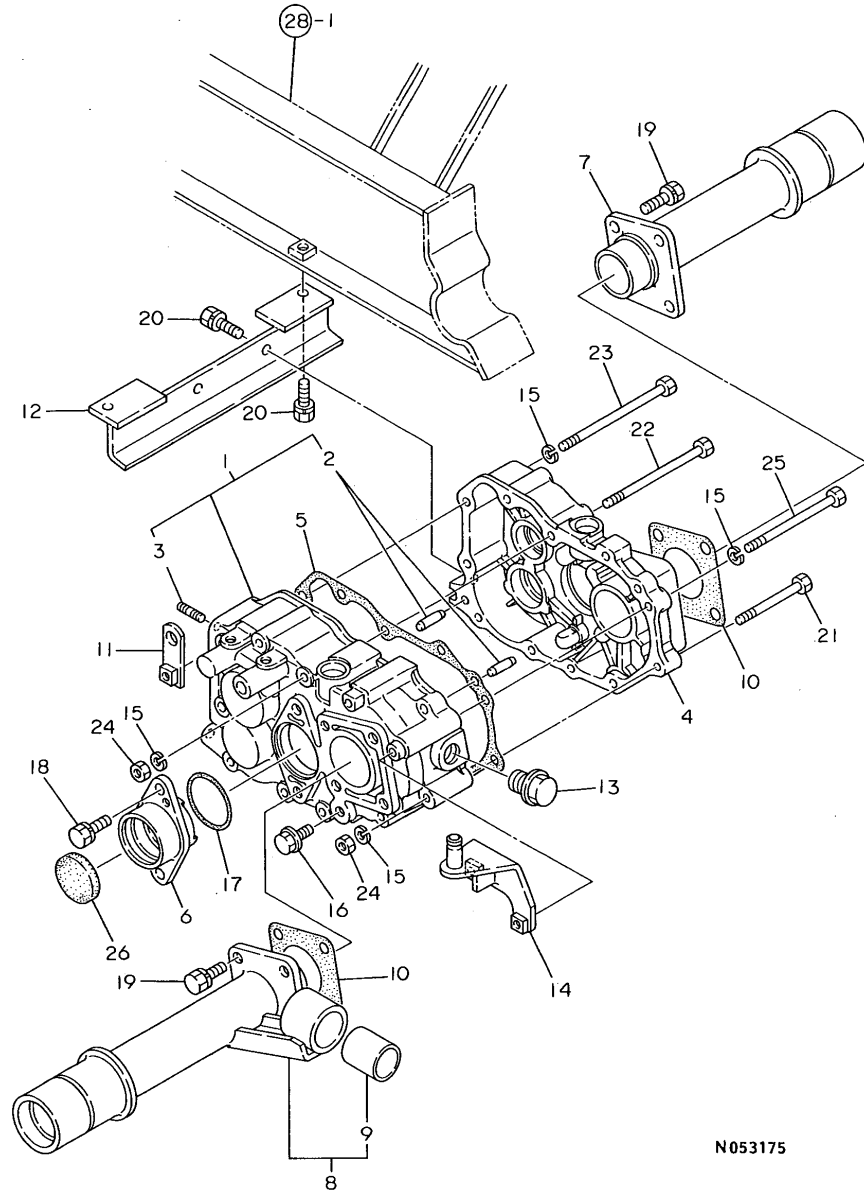
(A)=YSR1300DX
(B)=YSR1600DX
(C)=

(D)=
(E)=
(F)=

No.	Lev.	Parts No.	Description	Q'ty						I	R
				(A)	(B)	(C)	(D)	(E)	(F)		
1	1	1N1910-21300	SHAFT R,FINAL	1	1						
2	1	1N1910-21310	SHAFT L,FINAL	1	1						
3	1	1N1910-21320	GEAR 33,FINAL	2	2						
4	1	1N1740-21360	RETAINER,FINAL SHAFT	1	1						
5	1	1E6460-73190	COLLAR, 25X46X3.2	2	2						
6	1	1E4150-99090	RING, SEAL	2	2						
7	1	22252-000471	RING, 47	2	2						
8	1	24101-060054	BEARING, BALL 6005	2	2						
9	1	24101-062054	BEARING, BALL 6205	2	2						
10	1	24421-304708	SEAL, OIL TC304708	2	2						

Fig.10. TRANSMISSION CASE

10 . TRANSMISSION CASE



(A)=YSR1300DX
(B)=YSR1600DX
(C)=

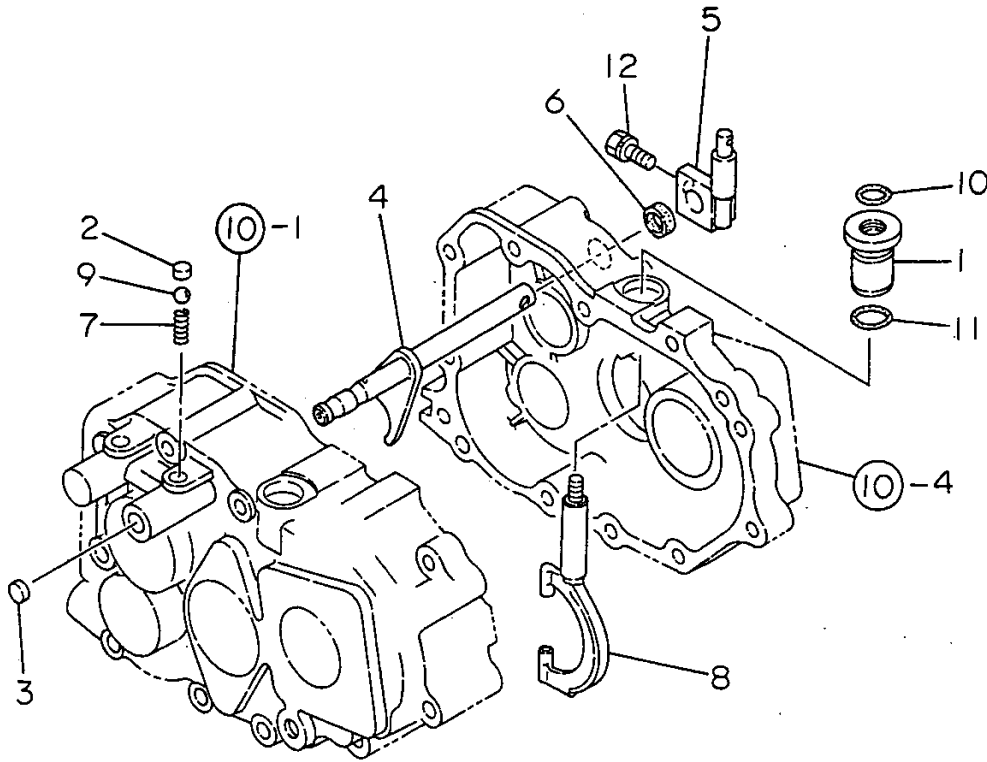
(D)=
(E)=
(F)=

No.	Lev.	Parts No.	Description	Q'ty						I	R
				(A)	(B)	(C)	(D)	(E)	(F)		
1	1	1N1910-23000	CASE L COMP.,TRANSM.	1	1						
2	2	1A1040-26060	PIN, 8X28	2	2						
3	2	26226-080202	STUD, M8X 20	4	4						
4	1	1N1910-23010	CASE R,TRANSMISSION	1	1						
5	1	1N1740-23030	PACKING,TRANSM.CASE	1	1						
6	1	1N1910-23040	COVER,BELT	2	2						
7	1	1N1910-23050	CASE R COMP.,FINAL	1	1						
8	1	1N1910-23090	CASE L COMP.,FINAL	1	1						
9	2	24550-032400	BUSH, 32X40	1	1						
10	1	1N1910-23150	PACKING,FINAL CASE	2	2						
11	1	1N1740-23480	HOOK,LIFTING	1	1						
12	1	1N1910-23510	BRACKET,TRANSM.MTG.	1	1						
13	1	23490-200002	PLUG, 20	1	1						
14	1	1N1740-32660	BRACET,CHG.FULCRUM	1	1						
14-1	1	1N1740-32661	BRACKET,CHG.FULCRUM	1							N
(A=F810001)											
15	1	22217-080000	WASHER, SPRING 8	11	11						
16	1	7A1040-48070	PLUG, OIL	1	1						
17	1	24341-000550	O-RING, 1AS55.0	2	2						
18	1	26016-100254	BOLT M10X 25	4	4						
19	1	26016-100254	BOLT M10X 25	8	8						
20	1	26016-100254	BOLT M10X 25	4	4						
21	1	26117-080802	BOLT, M8X 80 PLATED	2	2						
22	1	26116-081202	BOLT, M8X120 PLATED	6	6						
23	1	26117-081302	BOLT M 8X130 PLATED	1	1						
24	1	26717-080002	NUT, M8	8	8						
25	1	26117-081102	BOLT M 8X110 PLATED	2	2						
26	1	27260-470000	PLUG, 47	2	2						

Remarks
* 7N1910-23000 TRANSMISSION ASSY.

Fig.11. FORK SHAFT

11 . FORK SHAFT



N053176

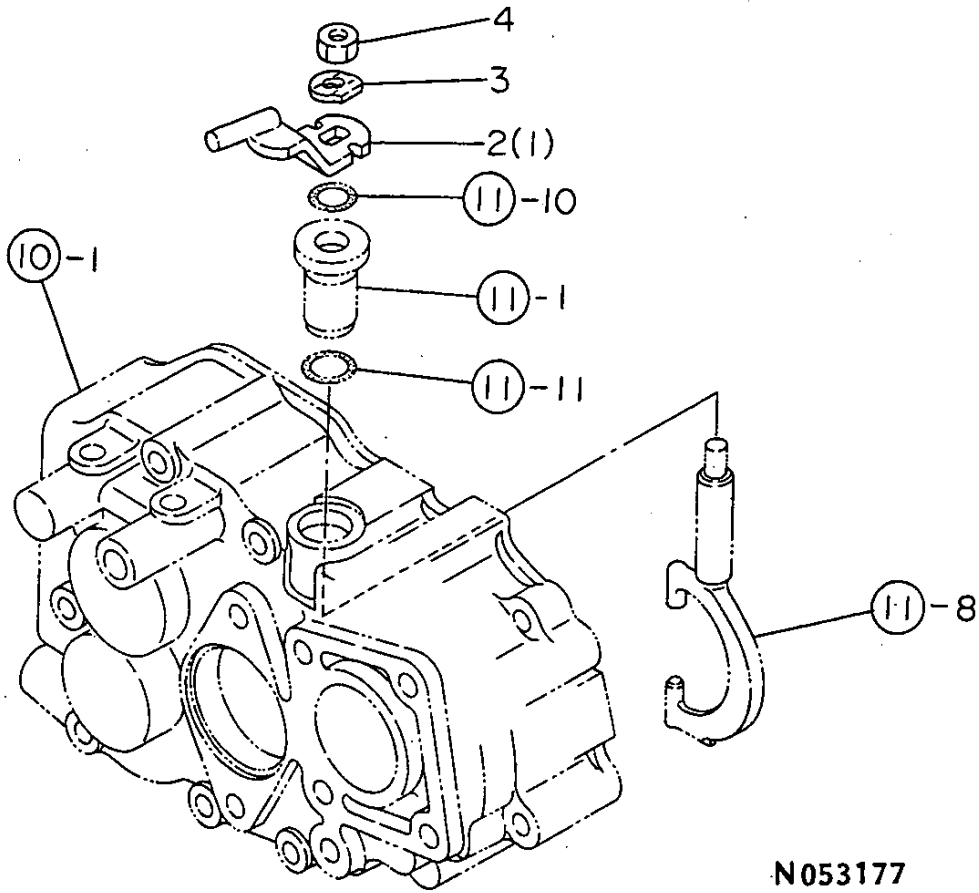
(A)=YSR1300DX
(B)=YSR1600DX
(C)=

(D)=
(E)=
(F)=

No.	Lev.	Parts No.	Description	Q'ty						I	R
				(A)	(B)	(C)	(D)	(E)	(F)		
1	1	1N1740-23170	BUSH,SIDE CLTCH.FORK	2	2						
2	1	1N1740-23180	COVER 10,BLIND	1	1						
3	1	1N1740-23190	COVER 12,BLIND	1	1						
4	1	1N1910-23200	SHAFT COMP.,FORK	1	1						
5	1	1N1910-23320	BRACKET,CHANGE ARM	1	1						
6	1	1A1104-28230	OIL SEAL 12184	1	1						
7	1	1E6150-56040	SPRING, FORK	1	1						
8	1	1E6070-56211	FORK,SIDE CLUTCH	2	2						
9	1	24190-100001	BALL, STEEL 5/16	1	1						
10	1	24311-000140	O-RING, 1AP14.0	2	2						
11	1	24311-000180	O-RING, 1AP18.0	2	2						
12	1	26016-060162	BOLT, M6X 16	1	1						

Fig.12. SIDE CLUTCH TIP LEVER

12 . SIDE CLUTCH TIP LEVER



N053177

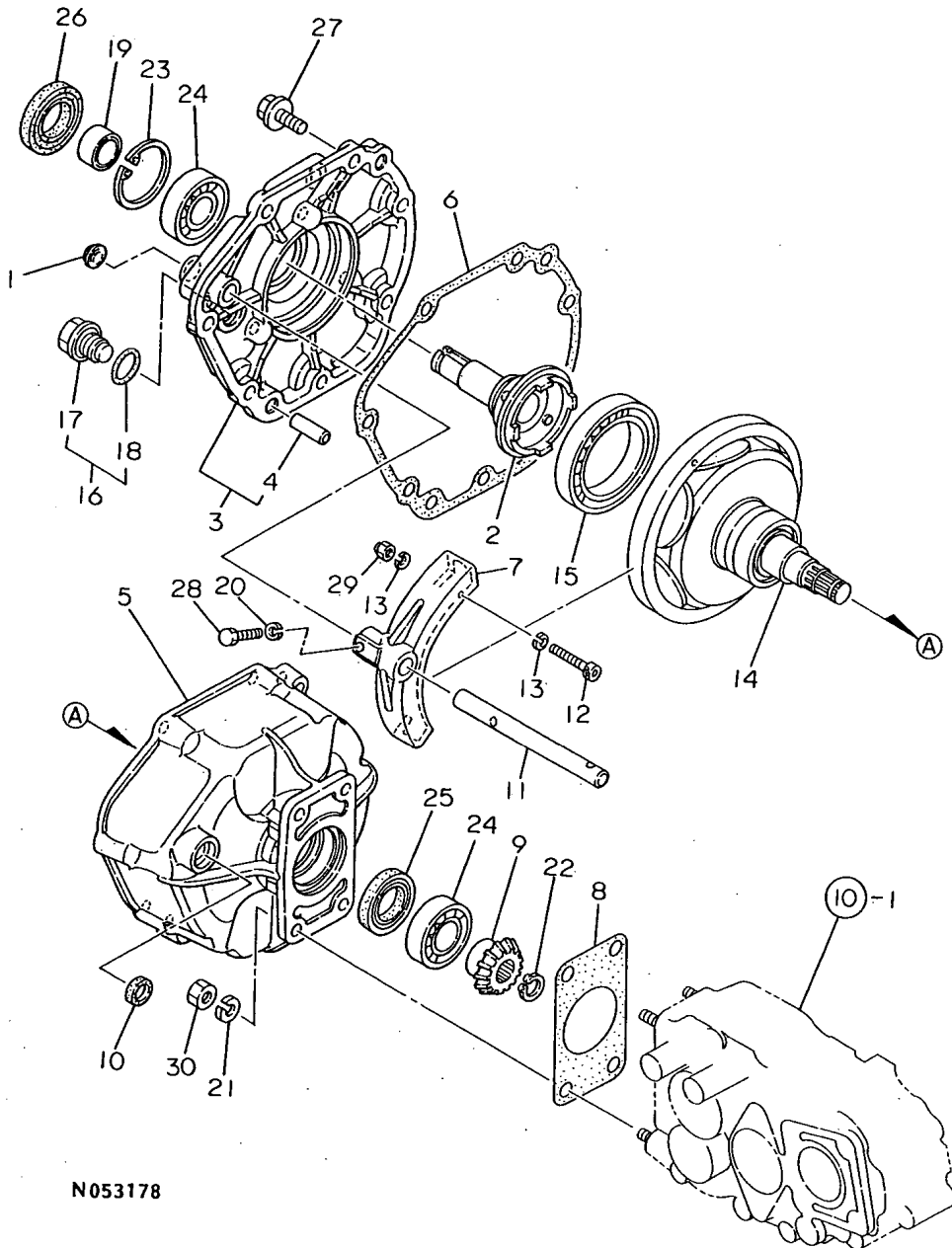
(A)=YSR1300DX
(B)=YSR1600DX
(C)=

(D)=
(E)=
(F)=

No.	Lev.	Parts No.	Description	Q'ty						I	R
				(A)	(B)	(C)	(D)	(E)	(F)		
1	1	1N1740-23350	LEVER R CMP,SD.CLTCH	1	1						
2	1	1N1740-23370	LEVER L CMP,SD.CLTCH	1	1						
3	1	1E6070-56290	WASHER, 8	2	2						
4	1	26717-080002	NUT, M8	2	2						

Fig.13. STEPLESS CHANGE GEAR

13. STEPLESS CHANGE GEAR



(A)=YSR1300DX
(B)=YSR1600DX
(C)=

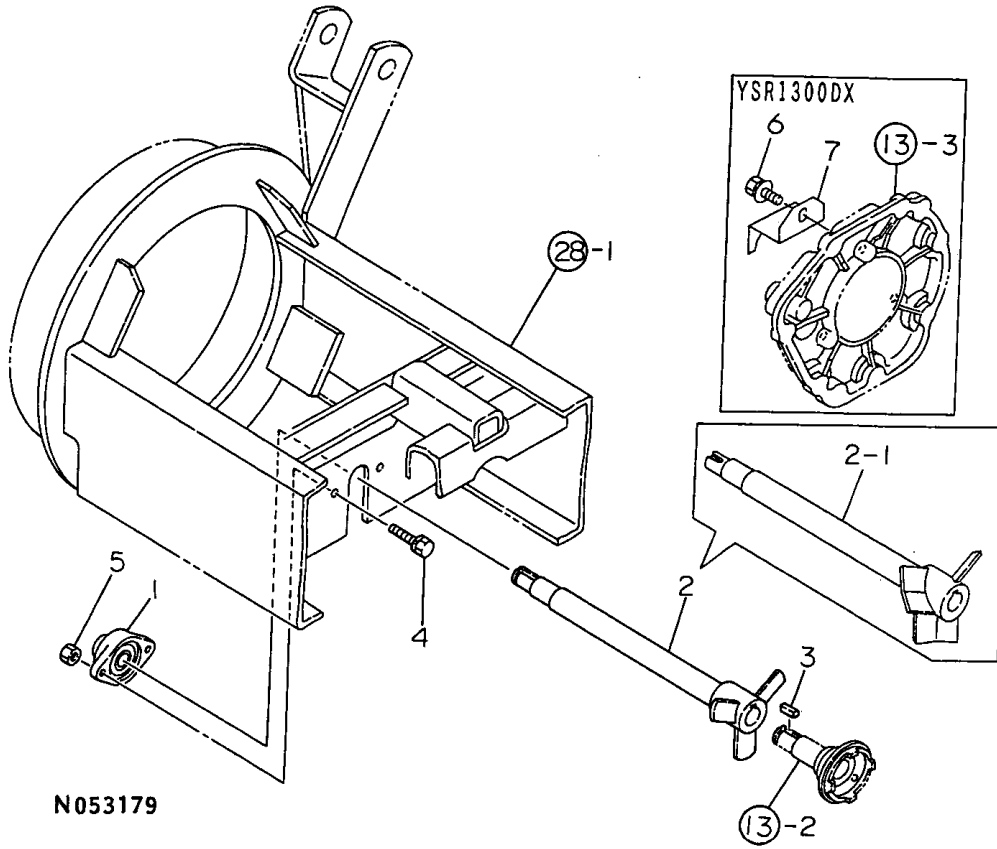
(D)=
(E)=
(F)=

No.	Lev.	Parts No.	Description	Q'ty						I	R
				(A)	(B)	(C)	(D)	(E)	(F)		
1	1	1A1470-20940	CAP 16	1	1						
2	1	1N1730-28011	SHAFT COMP.,INPUT	1	1						
3	1	1N1730-28100	COVER COMP,ARE SHIFT	1	1						
4	2	1A1040-26060	PIN, 8X28	2	2						
5	1	1N1730-28110	CASE,ARE SHIFT	1	1						
6	1	1N1730-28130	PACKING,RC	1	1						
7	1	1N1730-28140	FORK,RC	1	1						
8	1	1N1730-28150	PACKING,INPUT COVER	1	1						
9	1	1N1730-28220	GEAR 14,BEVEL	1	1						
10	1	1A1104-28230	OIL SEAL 12184	1	1						
11	1	1N1730-28250	ROD,RC FRONT	1	1						
12	1	1N1730-28410	BOLT 4X35,HEX.SOCKET	1	1						
13	1	1N1730-28420	SPRING 4,BELLEVILLE	2	2						
14	1	1N1730-28500	CORN RX-4X COMP,RING	1	1						
15	1	1N1730-28620	BEARING 6911	1	1						
16	1	7A1070-28690	OIL CAP 14	1	1						
17	2	1A1070-28690	PLUG, OIL 14	1	1						
18	2	24311-000160	O-RING, 1AP16.0	1	1						
19	1	1E6091-48710	SLEEVE, SI 20X25X13	1	1						
20	1	22217-050000	WASHER, SPRING 5	1	1						
21	1	22217-080000	WASHER, SPRING 8	4	4						
22	1	22242-000170	RING, 17	1	1						
23	1	22252-000470	RING, 47	1	1						
24	1	24101-062044	BEARING, BALL 6204	2	2						
25	1	24421-254008	SEAL, OIL TC254008	1	1						
26	1	24421-254708	SEAL, OIL TC254708	1	1						
27	1	26107-080252	BOLT M 8X 25 PLATED	7	7						
28	1	26116-050252	BOLT, M5X 25 PLATED	1	1						
29	1	26347-040002	NUT, M4	1	1						
30	1	26717-080002	NUT, M8	4	4						

N053178

Fig.14. R C INPUT SHAFT

14. R C INPUT SHAFT



N053179

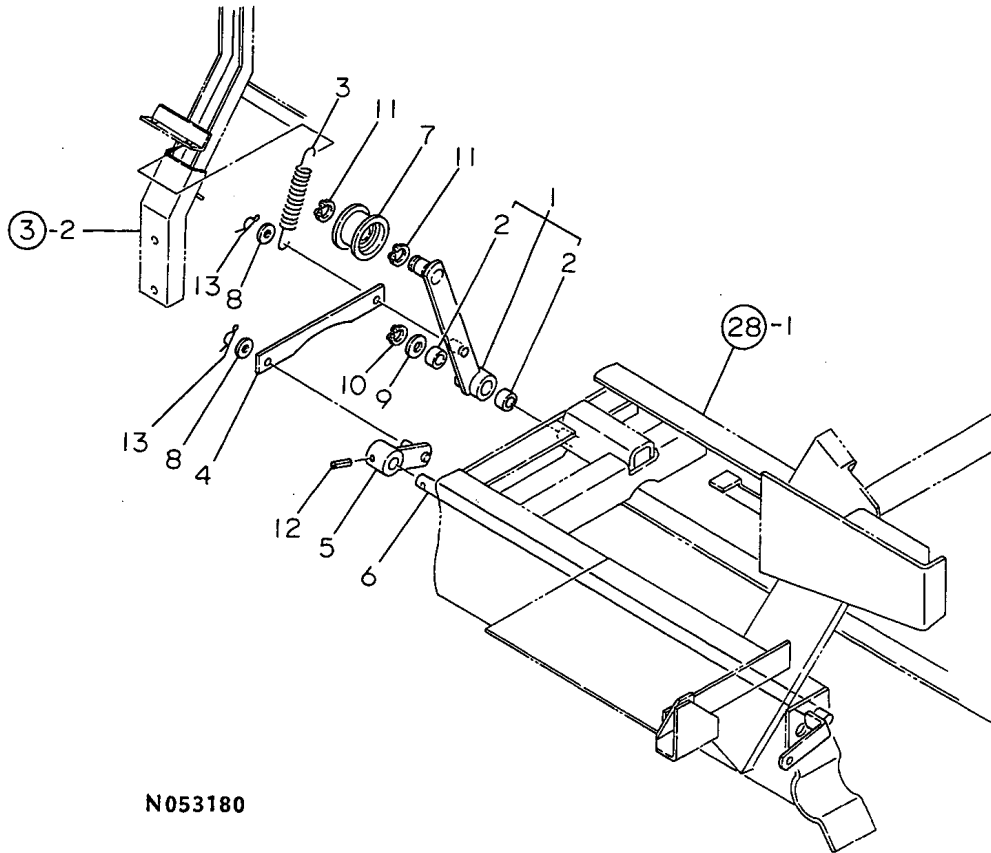
(A)=YSR1300DX
(B)=YSR1600DX
(C)=

(D)=
(E)=
(F)=

No.	Lev.	Parts No.	Description	Q'ty						I	R
				(A)	(B)	(C)	(D)	(E)	(F)		
1	1	1N1740-28000	BEARING UNIT	1	1						
2	1	1N1910-28050	SHAFT,RC INPUT	1	1						
2-1	1	1N1910-28051	SHAFT,RC.INPUT	1	1						S
3	1	22550-050150	KEY 5X15	1	1						
3-1	1	22551-050251	KEY 5X25	1	1						N
4	1	26016-080252	BOLT, M8X 25	2	2						
5	1	26717-080002	NUT, M8	2	2						
6	1	1N1910-28110	PLATE	1							W
7	1	26018-080204		1							W

Fig.15. TRAVELING TENSION

15. TRAVELING TENSION



N053180

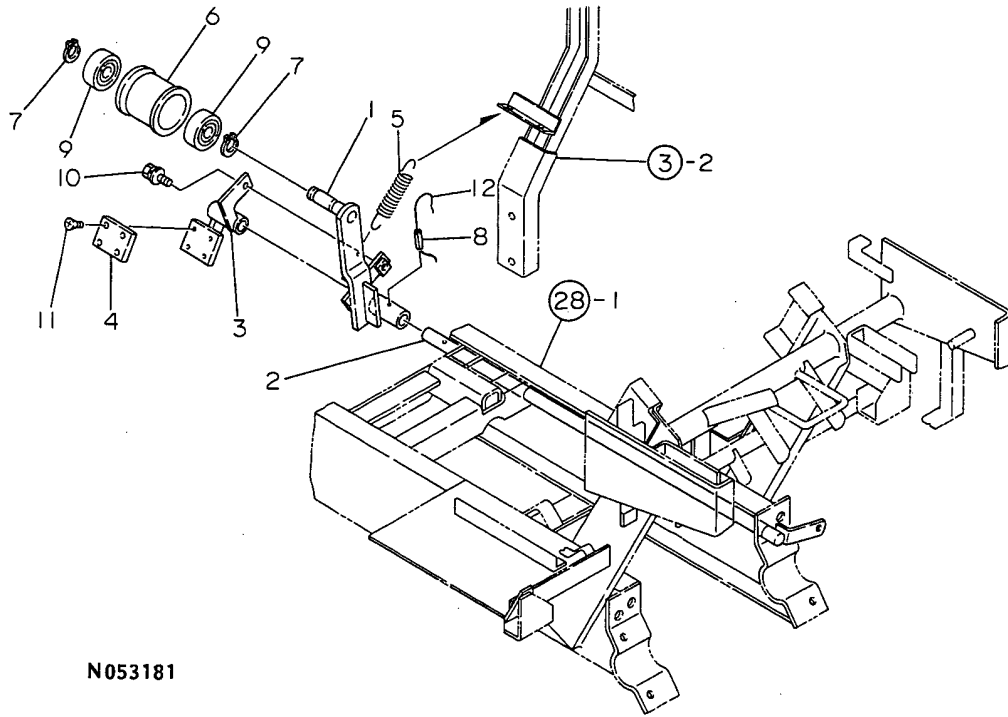
(A)=YSR1300DX
(B)=YSR1600DX
(C)=

(D)=
(E)=
(F)=

No.	Lev.	Parts No.	Description	Q'ty						I	R
				(A)	(B)	(C)	(D)	(E)	(F)		
1	1	1N1910-31000	TENSION CMP., TRAVEL	1	1						
2	2	24550-012100	BUSH 12X10	2	2						
3	1	1N1910-31050	SPRING, CLUTCH RETURN	1	1						
4	1	1N1910-31080	STAY, TENSION CONNECT	1	1						
5	1	1N1910-31100	ARM, FRONT COUPLING	1	1						
6	1	1N1910-31150	SHAFT L, TENSION	1	1						
7	1	1E6251-35400	PULLEY, TENSION 70A	1	1						
8	1	22137-080000	WASHER, 8	2	2						
9	1	22137-120000	WASHER, 12	1	1						
10	1	22242-000120	RING, 12	1	1						
11	1	22242-000150	RING, 15	2	2						
12	1	22351-060025	PIN, SPRING 6.0X25	1	1						
13	1	22372-080000	PIN, SNAP 8	2	2						

Fig.16. AUGER TENSION

16 . AUGER TENSION



N053181

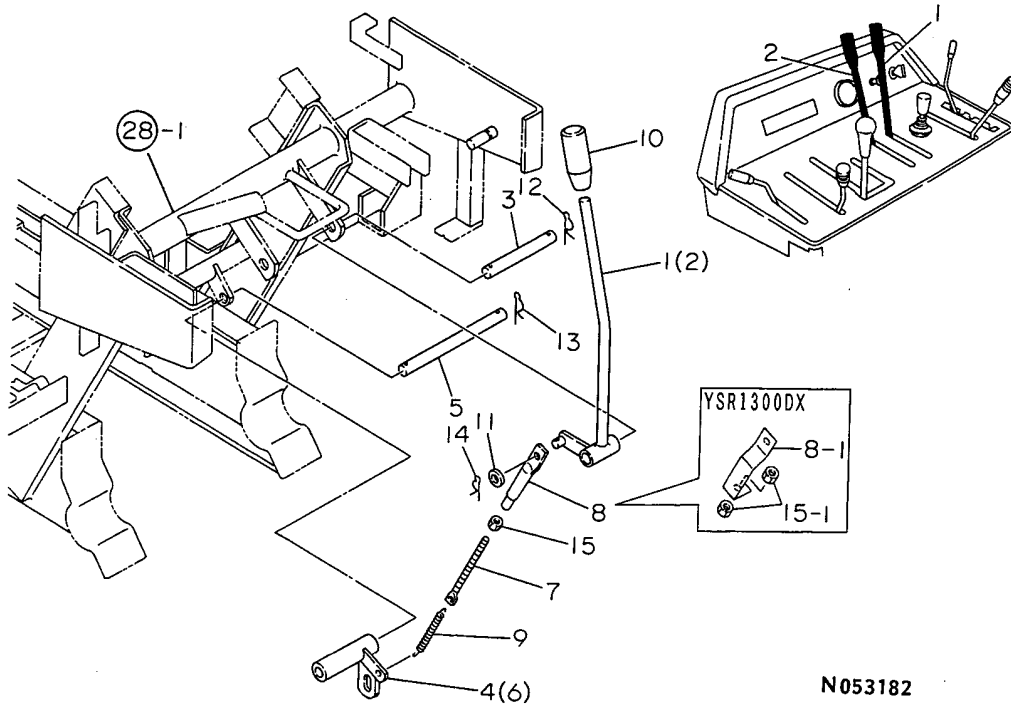
(A)=YSR1300DX
(B)=YSR1600DX
(C)=

(D)=
(E)=
(F)=

No.	Lev.	Parts No.	Description	Q'ty						I	R
				(A)	(B)	(C)	(D)	(E)	(F)		
1	1	1N1910-31250	TENSION.AUGER	1	1						
2	1	1N1910-31320	SHAFT R,TENSION	1	1						
3	1	1N1910-31350	LINK,AUGER BRAKE	1	1						
4	1	1N1730-31400	PLATE 42X52X5,FRICT.	1	1						
5	1	1N1730-31451	SPRING,BRAKE	1	1						
6	1	1A1050-64200	ROLLER, TENSION	1	1						
7	1	22242-000150	RING, 15	2	2						
8	1	22351-060025	PIN, SPRING 6.0X25	1	1						
9	1	24102-062024	BEARING, BALL 6202U	2	2						
10	1	26018-080204	BOLT M 8X 20	1	1						
11	1	26577-040082	SCREW, M4X 8	4	4						
12	1	22451-100100	WIRE, 1.0X 100	1	1						

Fig.17. SIDE CLUTCH CONTROL

17. SIDE CLUTCH CONTROL



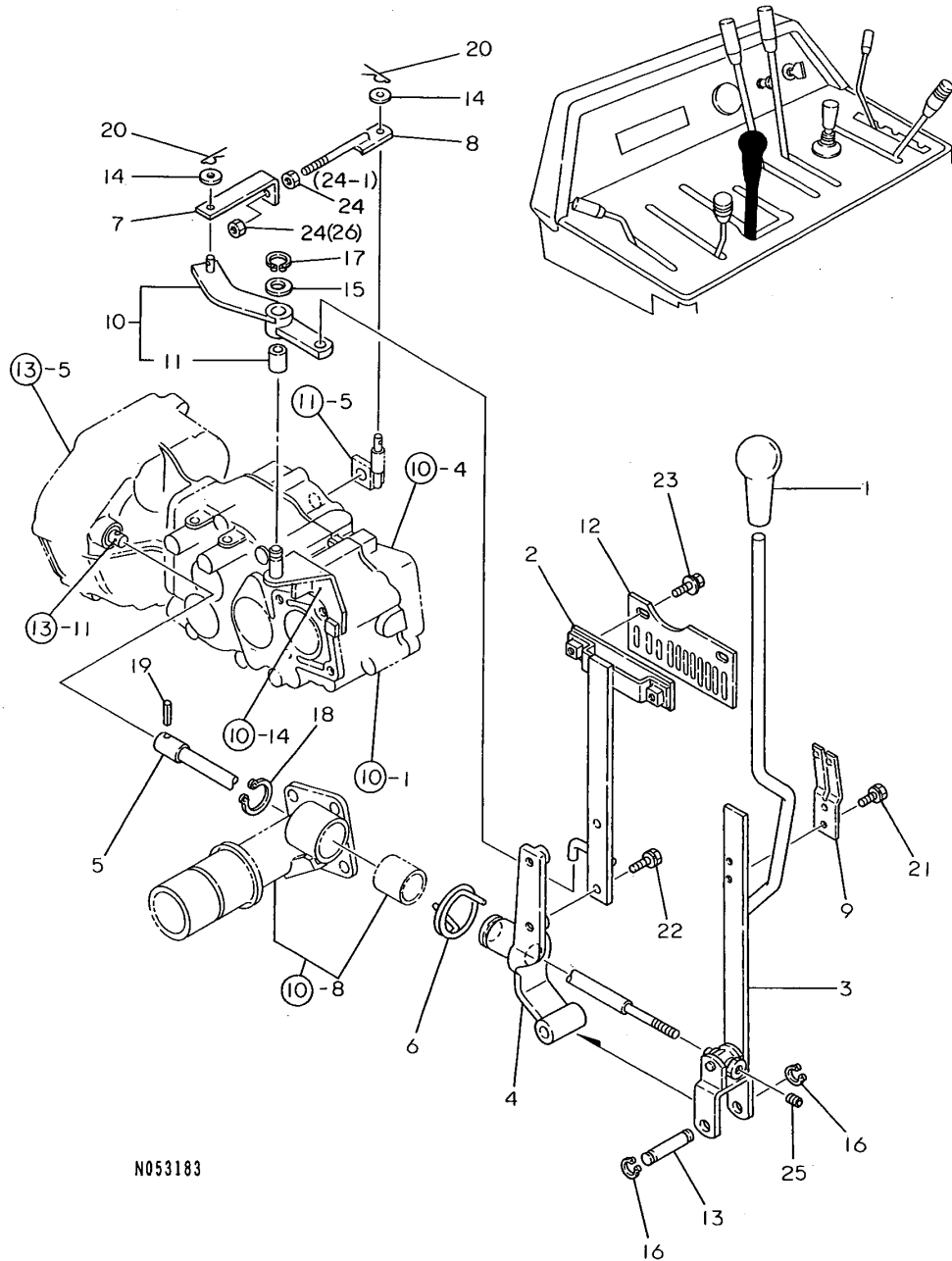
(A)=YSR1300DX
(B)=YSR1600DX
(C)=

(D)=
(E)=
(F)=

No.	Lev.	Parts No.	Description	Q'ty						I	R
				(A)	(B)	(C)	(D)	(E)	(F)		
1	1	1N1740-31511	LEVER R CMP,SD.CLTCH	1	1						
2	1	1N1740-31551	LEVER L CMP,SD.CLTCH	1	1						
3	1	1N1740-31580	SHAFT,SD.CLTCH.LEVER	1	1						
4	1	1N1910-31710	CONNECTOR R CMP,S.C.	1	1						
5	1	1N1740-31770	SHAFT,SD.CLTCH.CONN.	1	1						
6	1	1N1910-31810	CONNECTOR L CMP,S.C.	1	1						
7	1	1N1740-31850	ROD 8X85	2	2						
8	1	1N1730-32110	END 73,ROD	2	2						
8-1	1	1N1910-32110	END 80,BLACK ROD	2							Q
(A=F810001)											
9	1	1E6511-63811	SPRING, BRAKE	2	2						
10	1	1E6570-64760	GRIP, LEVER 12	2	2						
11	1	22137-080000	WASHER, 8	2	2						
12	1	22360-130000	PIN, SNAP 13	2	2						
13	1	22360-130000	PIN, SNAP 13	2	2						
14	1	22372-080000	PIN, SNAP 8	2	2						
15	1	26717-080002	NUT, M8	2	2						
15-1	1	26717-080002	NUT, M8	4							K
(A=F810001)											

Fig.18. CHANGE LEVER

18. CHANGE LEVER



N053183

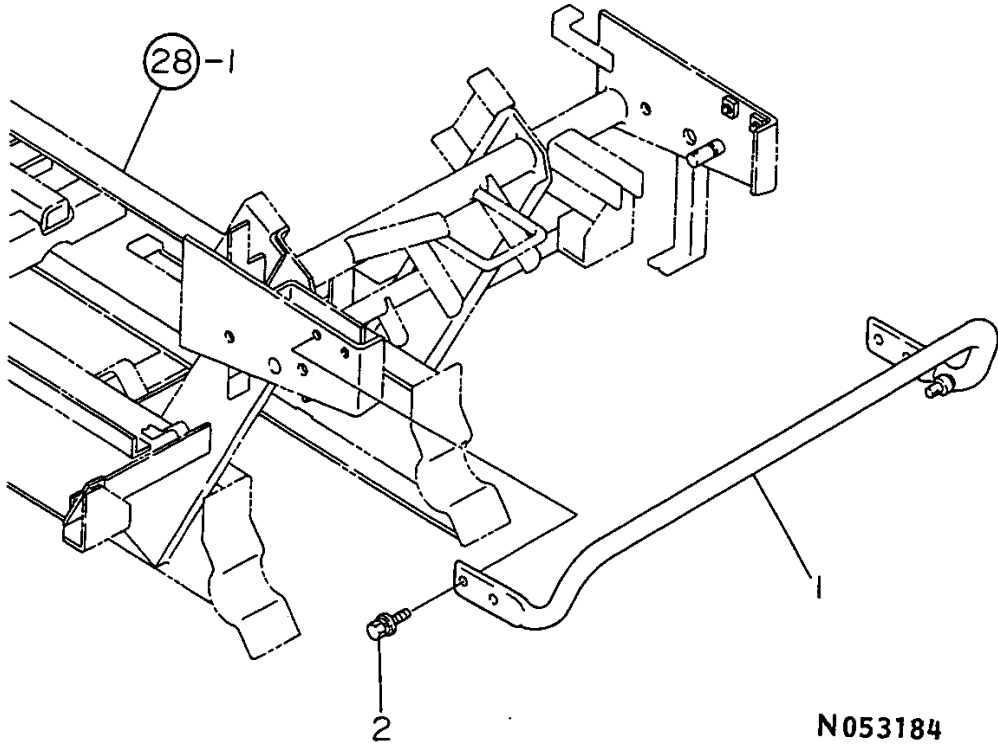
(A)=YSR1300DX
(B)=YSR1600DX
(C)=

(D)=
(E)=
(F)=

No.	Lev.	Parts No.	Description	Q'ty						I	R
				(A)	(B)	(C)	(D)	(E)	(F)		
1	1	1E4060-26430	GRIP, LEVER	1	1						
2	1	1N1740-32071	LEVER A,CHANGE	1	1						
3	1	1N1740-32151	LEVER B,CHANGE	1	1						
4	1	1N1740-32190	LEVER C,CHANGE	1	1						
5	1	1N1730-32271	ROD COMP.,RC REAR	1	1						
6	1	1N1740-32400	SPRING,LEVER RETURN	1	1						
7	1	1N1740-32410	ROD A,MAIN CHANGE	1	1						
8	1	1N1740-32421	ROD B,MAIN CHANGE	1	1						
9	1	1N1730-32450	SPRING,LEAF	1	1						
10	1	1N1910-32460	FULCRUM COMP.,CHANGE	1	1						
10-1	1	1N1910-32461	FULCRUM COMP.,CHANGE	1							N
		(A=F810001)									
11	2	24550-012200	BUSH, 12X20	1	1						
12	1	1N1730-32470	NOTCH,RC	1	1						
13	1	1N1730-32570	PIN,CHG.LVR.FULCRUM	1	1						
14	1	22137-080000	WASHER, 8	2	2						
15	1	22137-120000	WASHER, 12	1	1						
16	1	22242-000120	RING, 12	2	2						
17	1	22242-000120	RING, 12	1	1						
18	1	22242-000320	RING, 32	1	1						
19	1	22351-050025	PIN, SPRING 5.0X25	1	1						
20	1	22372-080000	PIN, SNAP 8	2	2						
21	1	26016-060124	BOLT 6X12 W/L.W.	2	2						
22	1	26016-080254	BOLT M 8X 25	2	2						
23	1	26018-080204	BOLT M 8X 20	2	2						
24	1	26717-080002	NUT, M8	2	2						
24-1	1	26717-080002	NUT, M8	1	1						K
		(A=F710105)	(B=F710072)								
25	1	26979-080102	SCREW, M8X10	1	1						
26	1	26347-080002	NUT, M8	1	1						W
		(A=F710105)	(B=F710072)								

Fig.19. HANDLE

19. HANDLE



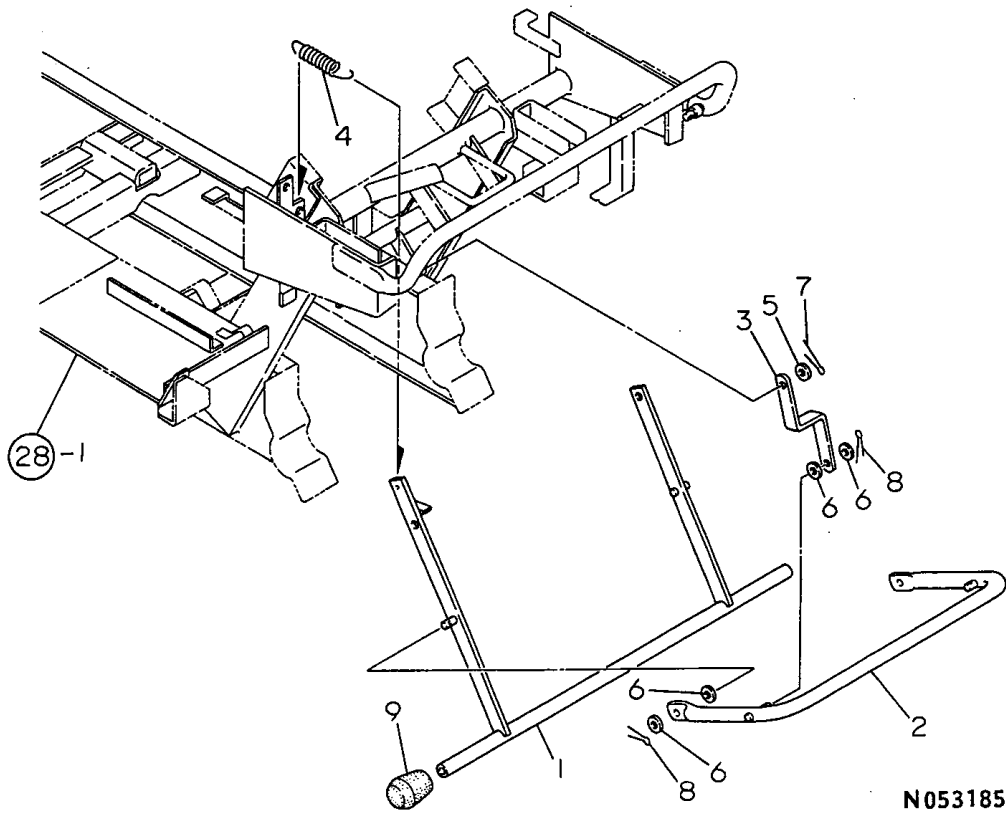
(A)=YSR1300DX
(B)=YSR1600DX
(C)=

(D)=
(E)=
(F)=

No.	Lev.	Parts No.	Description	Q'ty						I	R
				(A)	(B)	(C)	(D)	(E)	(F)		
1	1	1N1910-37010	HANDLE COMPL.	1	1						
2	1	26018-080204	BOLT M 8X 20	4	4						

Fig.20. BACK STOPPER

20 . BACK STOPPER



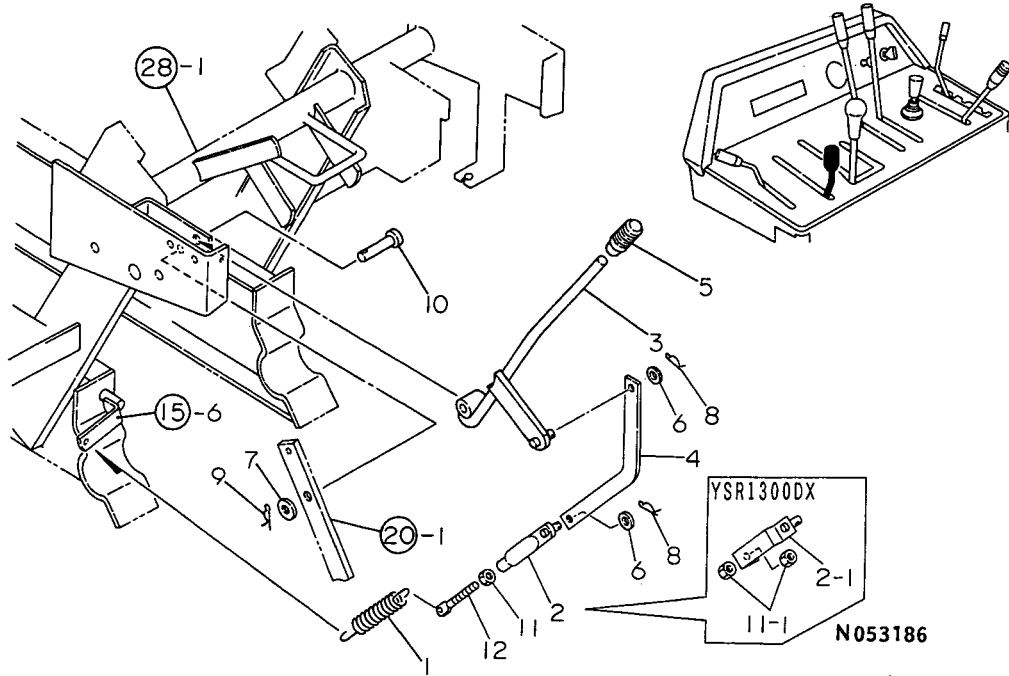
(A)=YSR1300DX
(B)=YSR1600DX
(C)=

(D)=
(E)=
(F)=

No.	Lev.	Parts No.	Description	Q'ty						I	R
				(A)	(B)	(C)	(D)	(E)	(F)		
1	1	1N1910-32850	ARM A CMP.,BACK STOP	1	1						
2	1	1N1910-32890	ARM B CMP.,BACK STOP	1	1						
3	1	1N1910-32910	LINK L,BACK STOP	2	2						
4	1	1N1740-37170	SPRING,BACK STOP	1	1						
5	1	22137-080000	WASHER, 8	2	2						
6	1	22137-080000	WASHER, 8	8	8						
7	1	22417-250200	PIN, COTTER 2.5X20	2	2						
8	1	22417-250200	PIN, COTTER 2.5X20	4	4						
9	1	933168-04590	RUBBER, LEVER	2	2						

Fig.21. TRAVELING CLUTCH

21 . TRAVELING CLUTCH



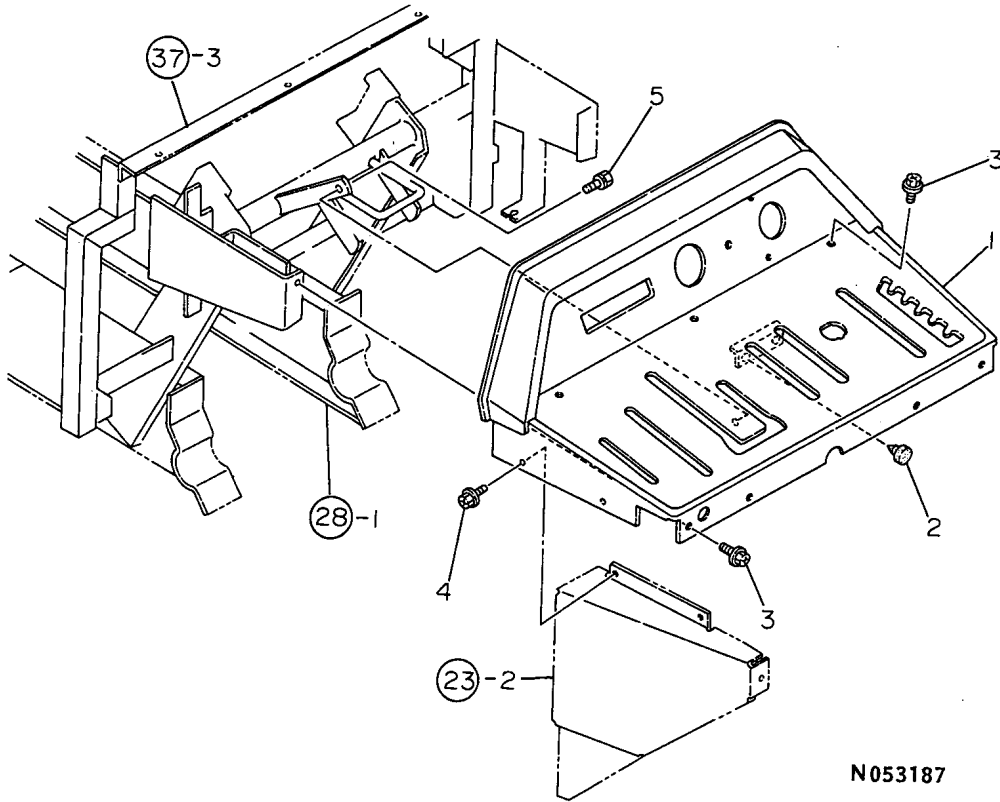
(A)=YSR1300DX
(B)=YSR1600DX
(C)=

(D)=
(E)=
(F)=

No.	Lev.	Parts No.	Description	Q'ty						I	R
				(A)	(B)	(C)	(D)	(E)	(F)		
1	1	1N1730-32100	SPRING,TENSION	1	1						
2	1	1N1910-32270	END 73,ROD	1	1						
2-1	1	1N1910-32120	END 80,ROD	1							S
(A=F810001)											
3	1	1N1910-32200	LEVER,TRAVEL CLUTCH	1	1						
4	1	1N1910-32250	ARM,CLUTCH	1	1						
5	1	1E6570-65761	GRIP,CONT.LEVER RED	1	1						
6	1	22137-080000	WASHER, 8	2	2						
7	1	22137-100000	WASHER, 10	1	1						
8	1	22372-080000	PIN, SNAP 8	2	2						
9	1	22372-100000	PIN, SNAP 10	1	1						
10	1	22487-100450	PIN 10X 45	1	1						
11	1	26717-080002	NUT, M8	1	1						
11-1	1	26717-080002	NUT, M8	2							K
(A=F810001)											
12	1	1N1740-31850	ROD 8X85	1	1						

Fig.22. CONTROL PANEL

22. CONTROL PANEL



N053187

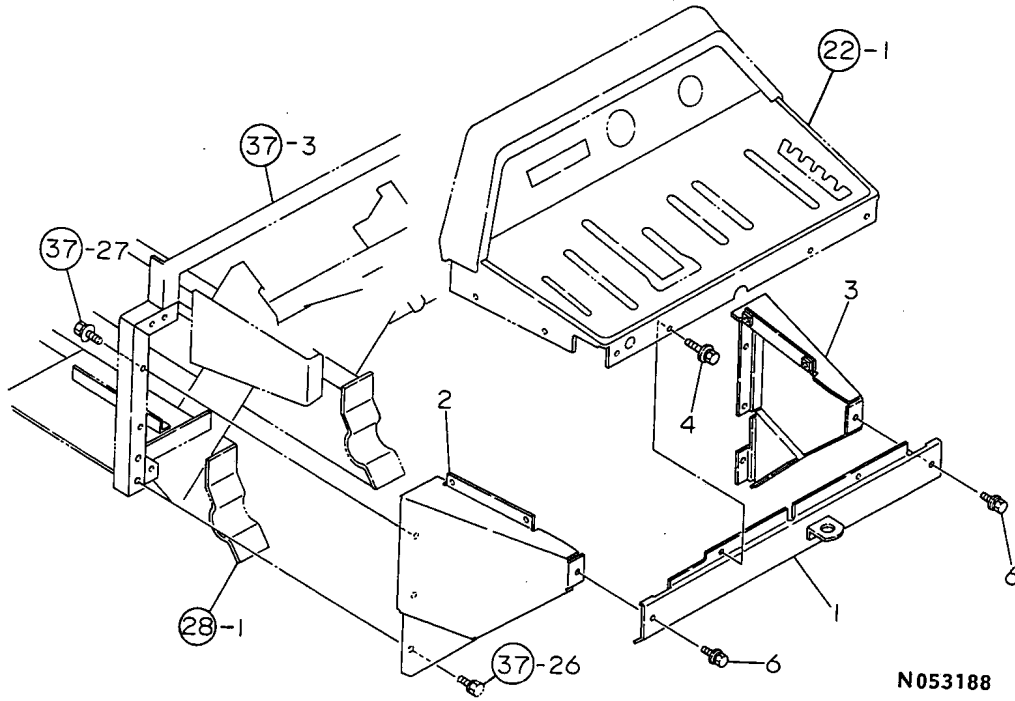
(A)=YSR1300DX
(B)=YSR1600DX
(C)=

(D)=
(E)=
(F)=

No.	Lev.	Parts No.	Description	Q'ty						I	R
				(A)	(B)	(C)	(D)	(E)	(F)		
1	1	1N1910-32510	PANEL COMP.,CONTROL	1	1						
2	1	1E6150-61310	RUBBER, STOPPER	2	2						
3	1	1E4320-99120	BOLT, M6X16 CRH	5	5						
4	1	1E4320-99120	BOLT, M6X16 CRH	4	4						
5	1	26016-060164	BOLT 6X16 W/L.W.	1	1						

Fig.23. PANEL SIDE BOARD

23. PANEL SIDE BOARD



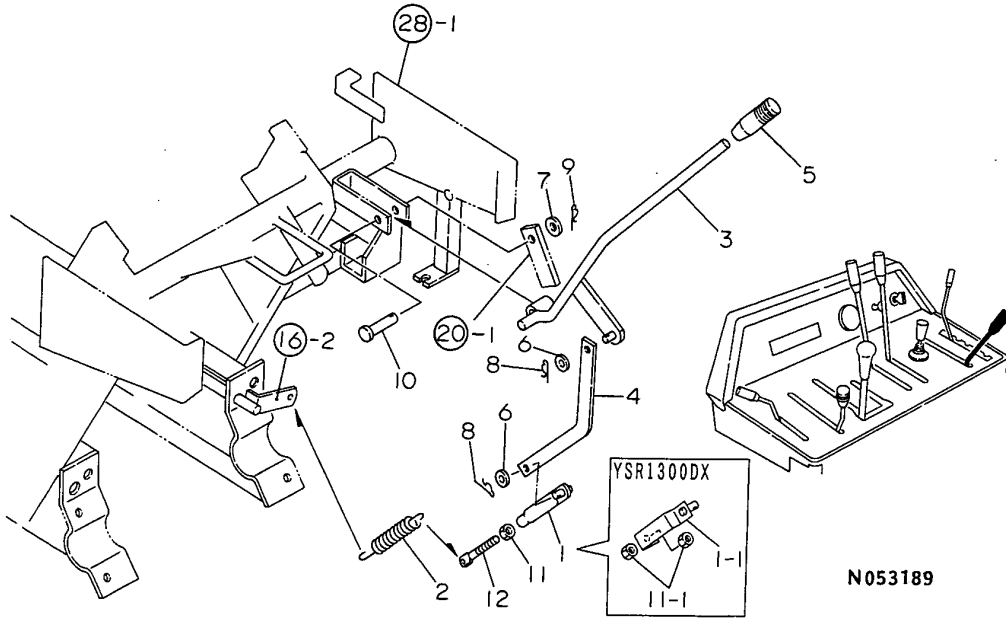
(A)=YSR1300DX
(B)=YSR1600DX
(C)=

(D)=
(E)=
(F)=

No.	Lev.	Parts No.	Description	Q'ty						I	R
				(A)	(B)	(C)	(D)	(E)	(F)		
1	1	1N1910-32650	COVER CMP,PANEL REAR	1	1						
2	1	1N1910-32710	PLATE L CMP,PANEL SD	1	1						
3	1	1N1910-32750	PLATE R CMP,PANEL SD	1	1						
4	1	1E4320-99120	BOLT, M6X16 CRH	2	2						
6	1	26016-060164	BOLT 6X16 W/L.W.	2	2						

Fig.24. AUGER CLUTCH

24 AUGER CLUTCH



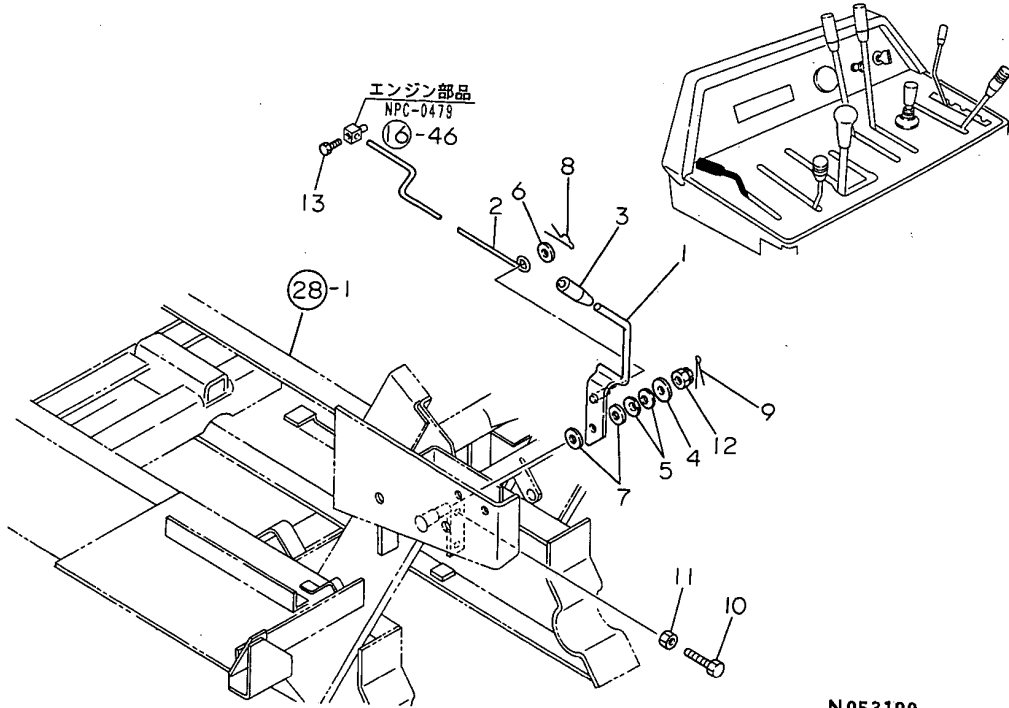
(A)=YSR1300DX
(B)=YSR1600DX
(C)=

(D)=
(E)=
(F)=

No.	Lev.	Parts No.	Description	Q'ty						I	R
				(A)	(B)	(C)	(D)	(E)	(F)		
1	1	1N1910-32270	END 73,ROD	1	1						
1-1	1	1N1910-32120	END 80,ROD	1							S
(A=F810001)											
2	1	1N1730-33120	SPRING,AUGER TENSION	1	1						
3	1	1N1910-33200	LEVER,AUGER CLUTCH	1	1						
4	1	1N1910-32250	ARM,CLUTCH	1	1						
5	1	1E6570-65761	GRIP,CONT.LEVER RED	1	1						
6	1	22137-080000	WASHER, 8	2	2						
7	1	22137-100000	WASHER, 10	1	1						
8	1	22372-080000	PIN, SNAP 8	2	2						
9	1	22372-100000	PIN, SNAP 10	1	1						
10	1	22487-100450	PIN 10X 45	1	1						
11	1	26717-080002	NUT, M8	1	1						
11-1	1	26717-080002	NUT, M8	2							K
(A=F810001)											
12	1	1N1740-31850	ROD 8X85	1	1						

Fig.25. ACCELERATOR LEVER

25. ACCELERATOR LEVER



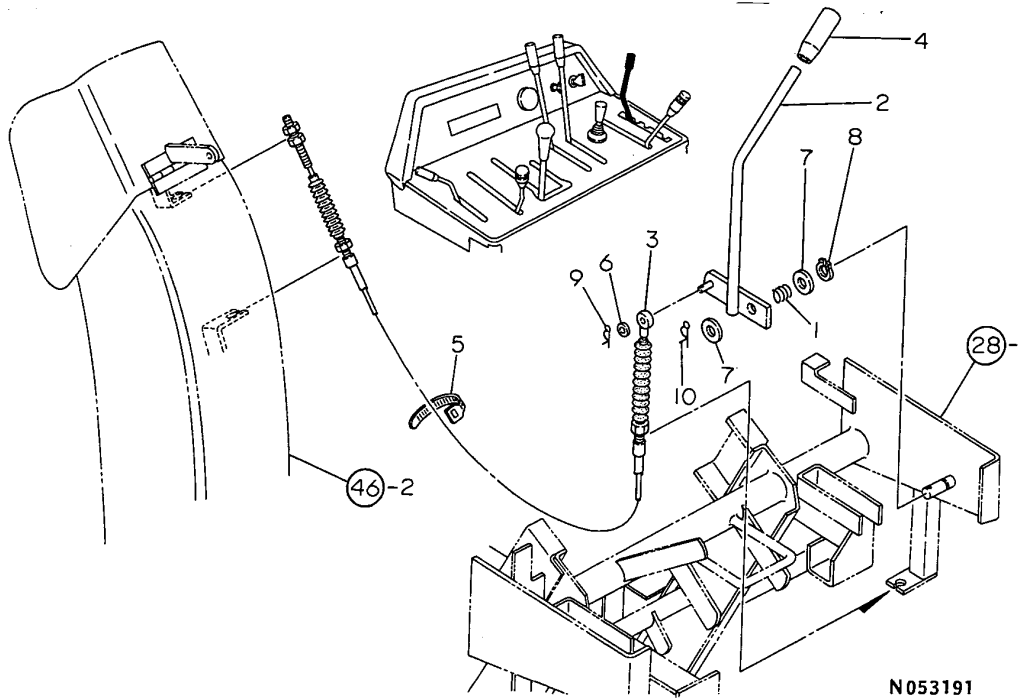
(A)=YSR1300DX
(B)=YSR1600DX
(C)=

(D)=
(E)=
(F)=

No.	Lev.	Parts No.	Description	Q'ty						I	R
				(A)	(B)	(C)	(D)	(E)	(F)		
1	1	1N1730-33511	LEVER,ACCELERATOR	1	1						
1-1	1	1N1730-33512	LEVER, ACCELE	1							N
(A=F810001)											
2	1	1N1910-33550	ROD,ACCELERATOR	1	1						
3	1	1A1140-58050	GRIP, STAND	1	1						
4	1	1E6050-63110	COLLAR, 10.5X28X3.2	1	1						
5	1	1E6390-95490	WASHER, SPRING	2	2						
6	1	22137-080000	WASHER, 8	1	1						
7	1	22137-120000	WASHER, 12	2	2						
8	1	22372-080000	PIN, SNAP 8	1	1						
9	1	22417-200250	PIN, COTTER 2.0X25	1	1						
10	1	26117-060352	BOLT M 6X 35 PLATED	2	2						
11	1	26717-060002	NUT, M6	2	2						
12	1	26837-100002	NUT, CASTLE M10	1	1						
13	1	26117-050102	BOLT M 5X 10 PLATED	1	1						

Fig.26. CHUTE LEVER

26 . CHUTE LEVER



N053191

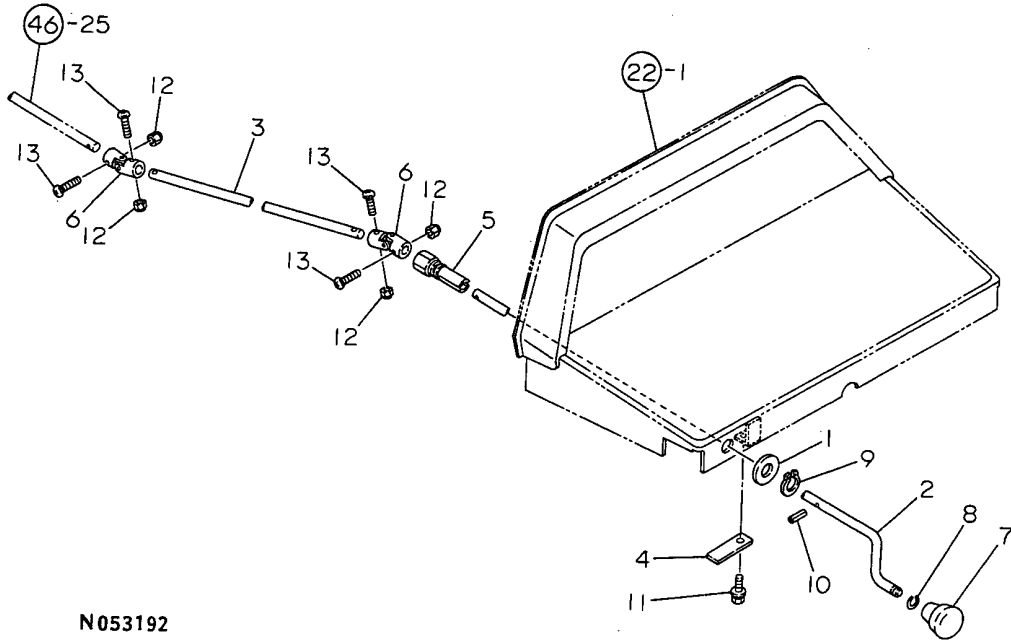
(A)=YSR1300DX
(B)=YSR1600DX
(C)=

(D)=
(E)=
(F)=

No.	Lev.	Parts No.	Description	Q'ty						I	R
				(A)	(B)	(C)	(D)	(E)	(F)		
1	1	1E6570-33610	SPRING, 16.3X20	1	1						
2	1	1N1910-34010	LEVER,CHUTE CAP	1	1						
3	1	1N1910-34040	CHUTE WIRE	1	1						
4	1	1E6570-65751	GRIP, LEVER	1	1						
5	1	1E6460-83400	BAND 100	2	2						
6	1	22137-060000	WASHER, 6	1	1						
7	1	22137-120000	WASHER, 12	2	2						
8	1	22242-000120	RING, 12	1	1						
9	1	22372-060000	PIN, SNAP 6	1	1						
10	1	22372-120000	PIN, SNAP 12	1	1						

Fig.27. CHUTE HANDLE

27. CHUTE HANDLE



N053192

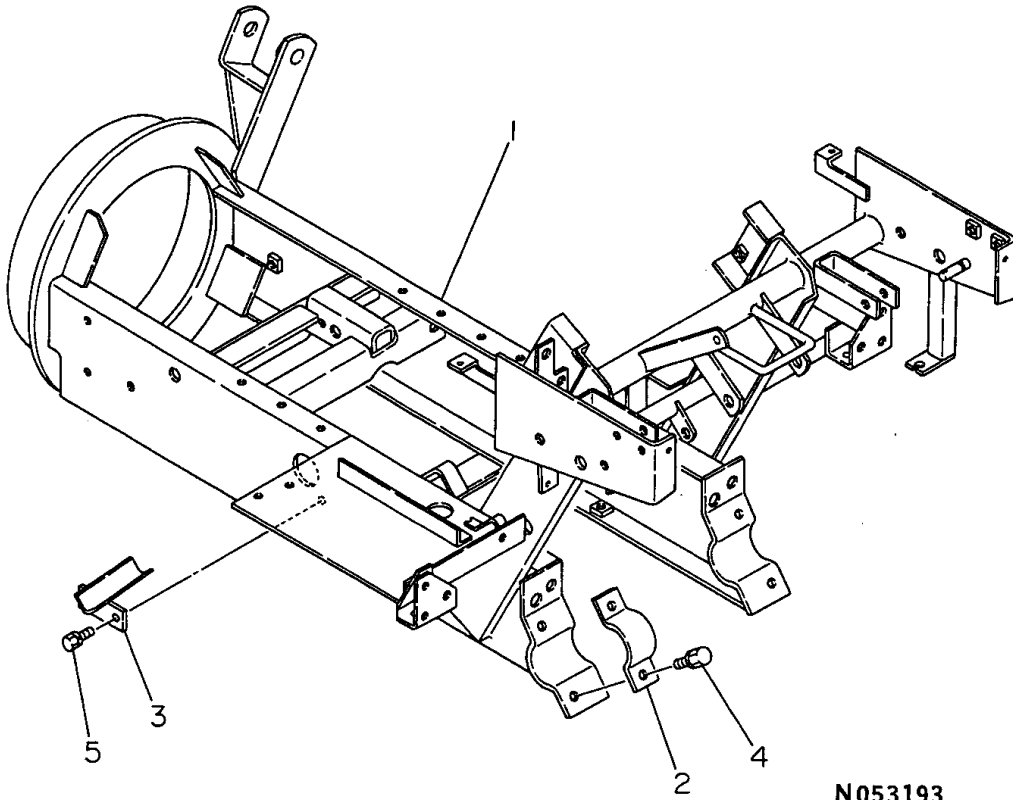
(A)=YSR1300DX
(B)=YSR1600DX
(C)=

(D)=
(E)=
(F)=

No.	Lev.	Parts No.	Description	Q'ty						I	R
				(A)	(B)	(C)	(D)	(E)	(F)		
1	1	22137-200000	WASHER, 20	1	1						
2	1	1N1910-34060	HANDLE A,CHUTE	1	1						
3	1	1N1910-34070	HANDLE B,CHUTE	1	1						
4	1	1N1910-34080	SPRING,CHUTE HANDLE	1	1						
5	1	1N1910-34090	METAL,CHUTE HANDLE	1	1						
6	1	1N1730-34110	JOINT CMP,UNIVERSAL	2	2						
7	1	1A1120-71070	GRIP, ADJUST	1	1						
8	1	1A1040-76110	CIRCLIP, 11	1	1						
9	1	22242-000200	RING, 20	1	1						
10	1	22351-040025	PIN, SPRING 4.0X25	1	1						
11	1	26018-060164	BOLT M 6X 16	1	1						
12	1	26347-040002	NUT, M4	4	4						
13	1	26557-040252	SCREW, M4X25	4	4						

Fig.28. CHASSIS

28 . CHASSIS



N053193

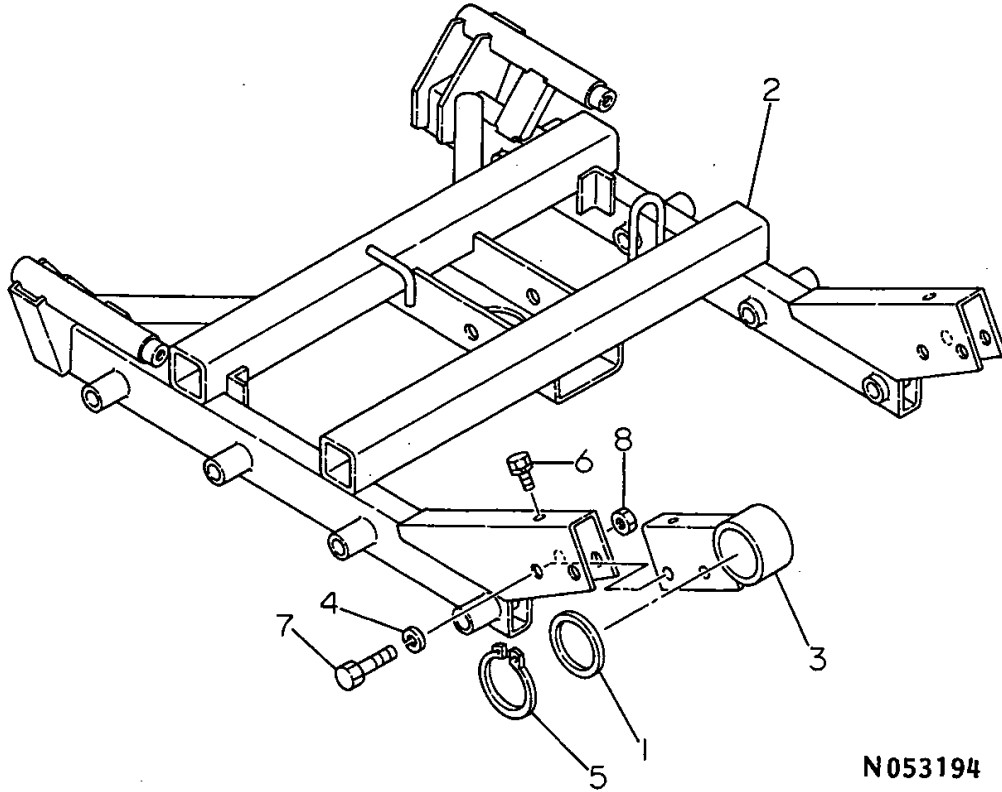
(A)=YSR1300DX
(B)=YSR1600DX
(C)=

(D)=
(E)=
(F)=

No.	Lev.	Parts No.	Description	Qty						I	R
				(A)	(B)	(C)	(D)	(E)	(F)		
1	1	1N1910-36010	CHASSIS COMPL.	1	1						
2	1	1N1740-36250	RETAINER,FINAL	2	2						
3	1	1N1910-36810	CHUTE,WASTE OIL	1	1						
4	1	26013-100252	BOLT, M10X 25	4	4						
5	1	26016-060202	BOLT, M6X 20	2	2						

Fig.29. TRACK FRAME

29 . TRACK FRAME



N053194

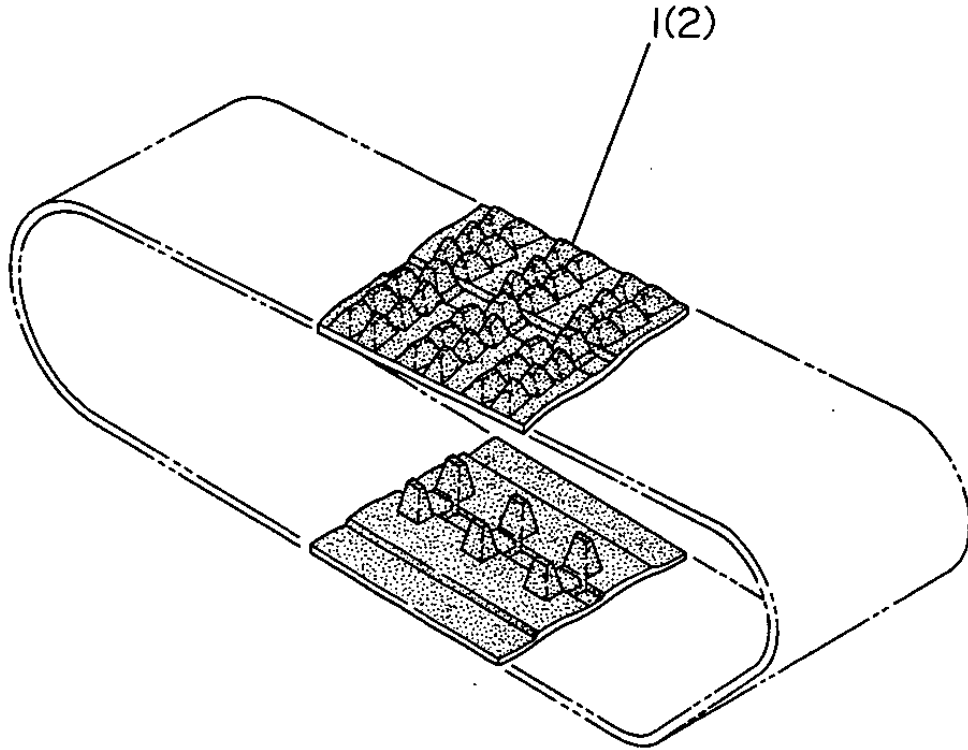
(A)=YSR1300DX
(B)=YSR1600DX
(C)=

(D)=
(E)=
(F)=

No.	Lev.	Parts No.	Description	Q'ty						I	R
				(A)	(B)	(C)	(D)	(E)	(F)		
1	1	1C6210-12130	COLLAR, 60X71X1	2	2						
2	1	1N1910-38010	FRAME COMP.,TRACK	1	1						
3	1	1N1910-38150	JOINT,TRACK FRAME	2	2						
4	1	22217-120000	WASHER, SPRING 12	4	4						
5	1	22242-000601	CIRCLIP 60-S	2	2						
6	1	26013-100202	BOLT, M10X 20	2	2						
7	1	26116-120502	BOLT, M12X 50 PLATED	4	4						
8	1	26717-120002	NUT, M12	4	4						

Fig.30. CRAWLER

30 . CRAWLER



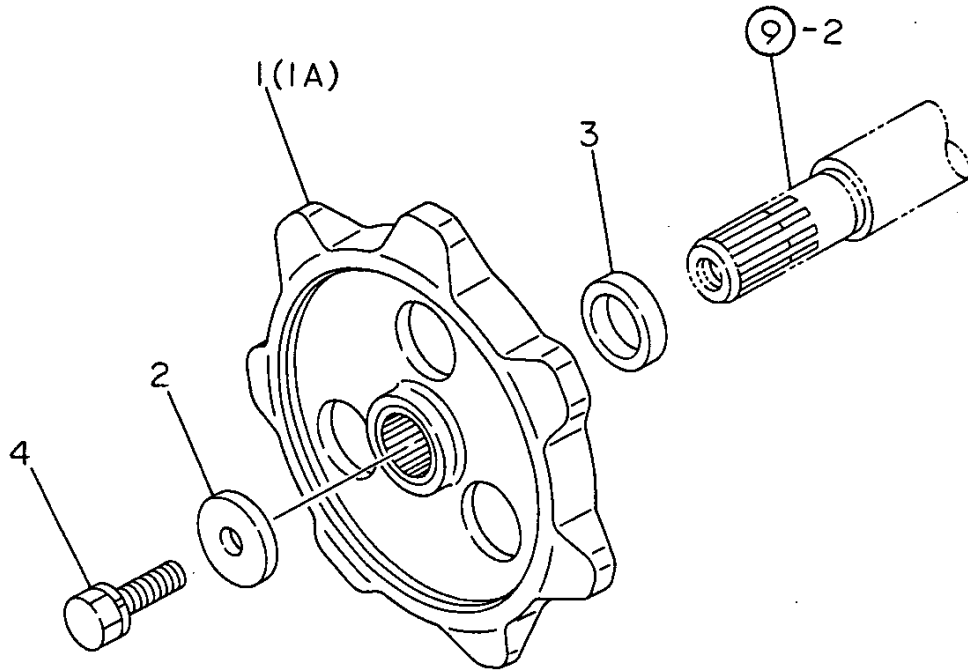
(A)=YSR1300DX
(B)=YSR1600DX
(C)=

(D)=
(E)=
(F)=

No.	Lev.	Parts No.	Description	Q'ty						I	R
				(A)	(B)	(C)	(D)	(E)	(F)		
1	1	1N1910-38210	CRAWLER 250X72X23	2							
2	1	1N1920-38210	CRAWLER 270X72X34		2						

Fig.31. SPROCKET

31 SPROCKET



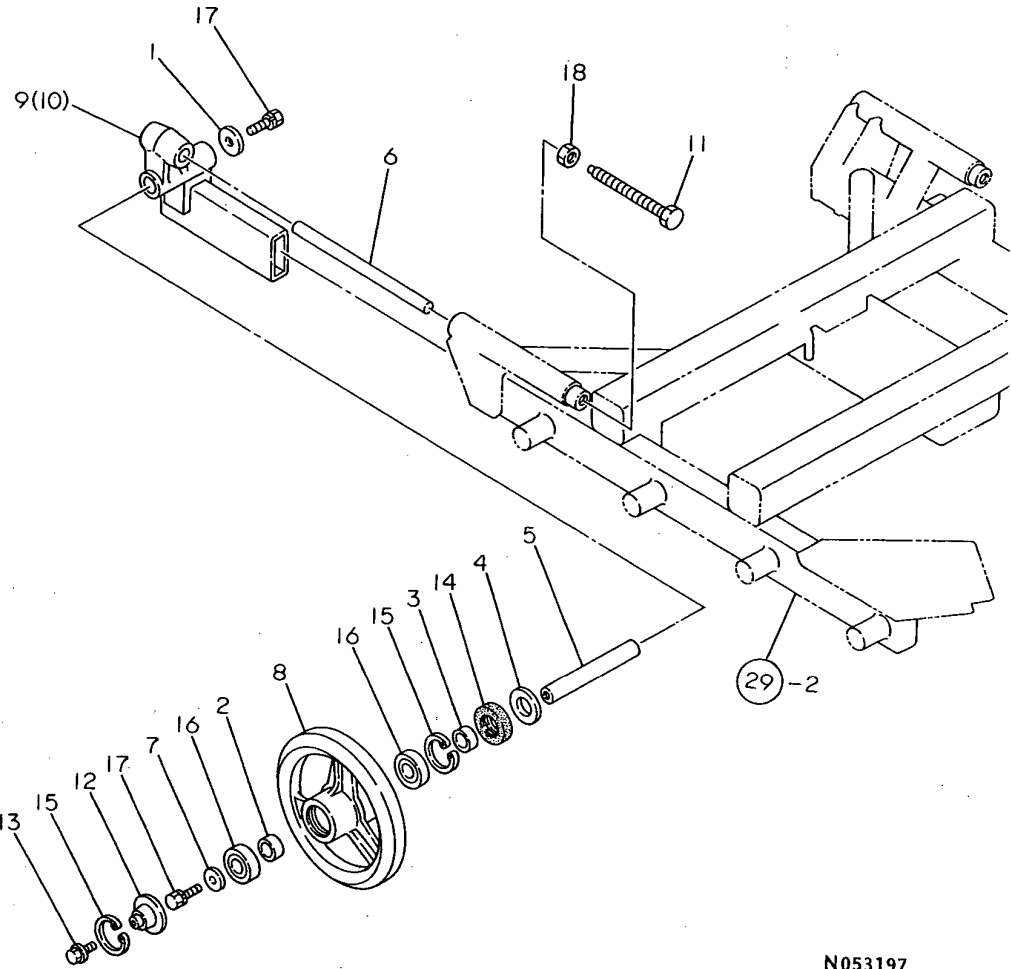
(A)=YSR1300DX
(B)=YSR1600DX
(C)=

(D)=
(E)=
(F)=

No.	Lev.	Parts No.	Description	Q'ty						I	R
				(A)	(B)	(C)	(D)	(E)	(F)		
1	1	1N1910-38181	SPROCKET 6	2							
1A	1	1N1920-38180	SPROCKET 7		2						
2	1	1A1380-46460	WASHER, 10X33X6	2	2						
3	1	1E6480-87760	COLLAR,LVR.RET.SPR'G	2	2						
4	1	26013-100302	BOLT, M10X 30	2	2						

Fig.32. IDLER(UW)

32. IDLER(UW)



N053197

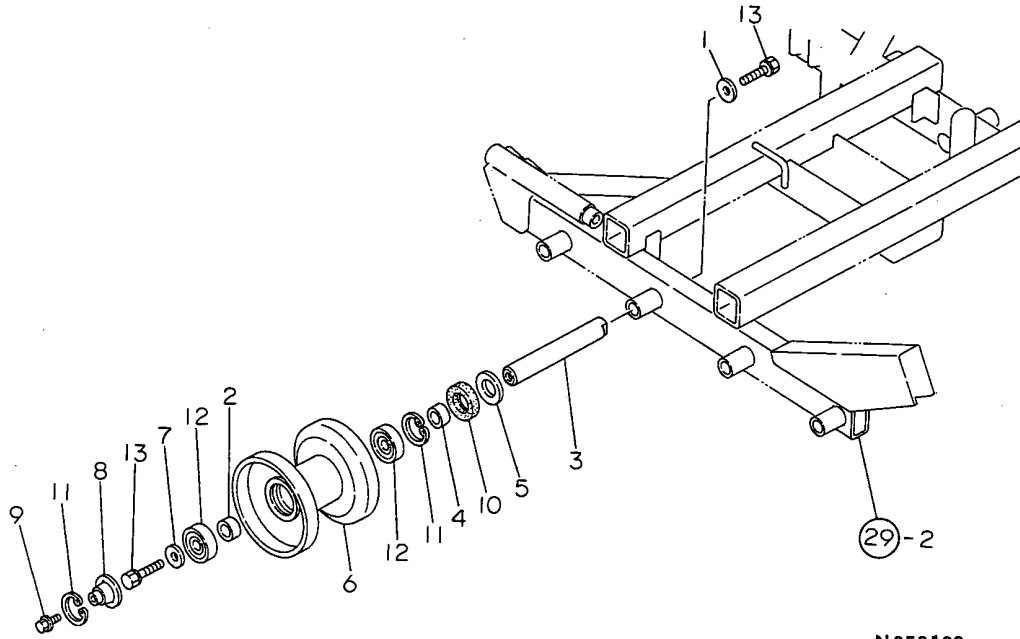
(A)=YSR1300DX
(B)=YSR1600DX
(C)=

(D)=
(E)=
(F)=

No.	Lev.	Parts No.	Description	Qty						I	R
				(A)	(B)	(C)	(D)	(E)	(F)		
1	1	1A1040-46460	WASHER, 10X33X4.5	2	2						
2	1	1E6050-58240	COLLAR, 20.4X25.4X12	2	2						
3	1	1E6460-73061	SLEEVE, SI 20X25X13	2	2						
4	1	1E6460-73080	COLLAR, 20X41X3.2	2	2						
5	1	1E6570-73150	SHAFT, IDLER	2	2						
6	1	1E6250-73180	SHAFT, IDLER TENSION	2	2						
7	1	1E6570-73201	WASHER, 10.5X28X3.2	2	2						
8	1	1E6670-73200	IDLER, 204	2	2						
9	1	1E6570-73300	METAL L, IDLER	1	1						
9-1	1	1E8090-73300	METAL L, IDLER	1	1						R
		(A=F710001) (B=F710001)									
10	1	1E6570-73350	METAL R, IDLER	1	1						
10-1	1	1E8090-73350	METAL, IDLER R	1	1						R
		(A=F710001) (B=F710001)									
11	1	1E6070-73490	BOLT, TENSION	2	2						
12	1	1E6570-73700	CAP, ROLLER	2	2						
13	1	1E6570-73730	BOLT, M6X8	2	2						
14	1	1E6570-73880	SEAL, KCYX25X42X8	2	2						
15	1	22252-000421	CIRCLIP 42	4	4						
16	1	24101-060044	BEARING, BALL 6004	4	4						
17	1	26043-100302	BOLT, M10X 30	4	4						
18	1	26717-120002	NUT, M12	2	2						

Fig.33. TRACK ROLLER

33. TRACK ROLLER



N053198

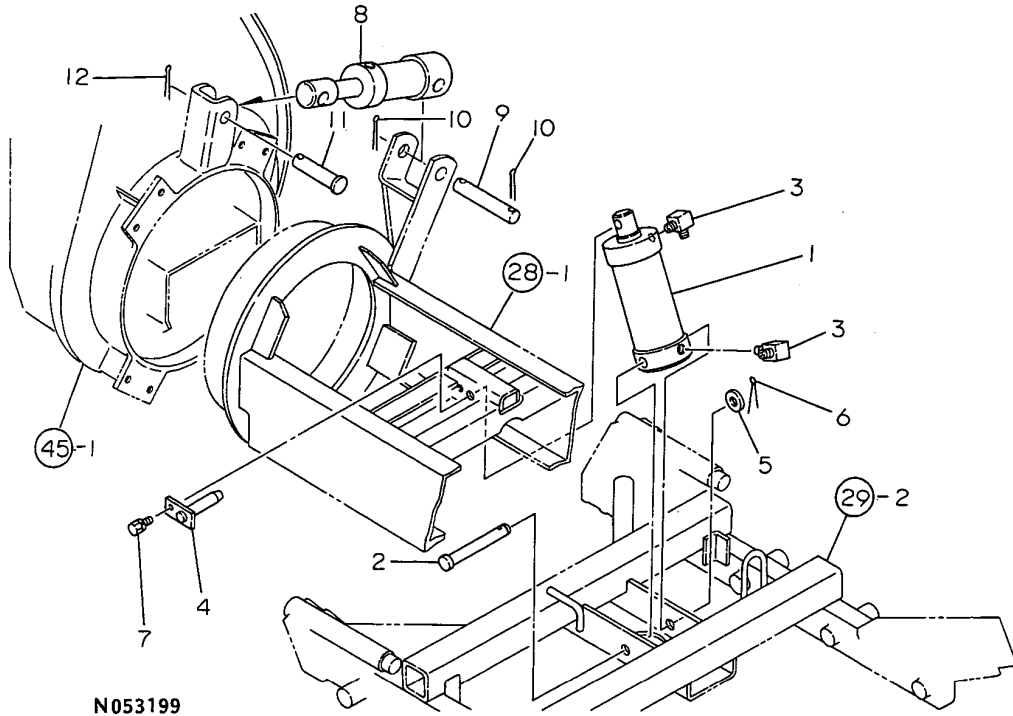
(A)=YSR1300DX
(B)=YSR1600DX
(C)=

(D)=
(E)=
(F)=

No.	Lev.	Parts No.	Description	Q'ty						I	R
				(A)	(B)	(C)	(D)	(E)	(F)		
1	1	1A1040-46460	WASHER, 10X33X4.5	8	8						
2	1	1E6050-58240	COLLAR, 20.4X25.4X12	8	8						
3	1	1E6570-73051	SHAFT, ROLLER	8	8						
3-1	1	1E6760-73050 (A=F710001) (B=F710001)	SHAFT, ROLLER	8	8						N
4	1	1E6460-73061	SLEEVE, SI 20X25X13	8	8						
5	1	1E6460-73080	COLLAR, 20X41X3.2	8	8						
6	1	1E6570-73100	ROLLER, TRUCK	8	8						
7	1	1E6570-73201	WASHER, 10.5X28X3.2	8	8						
8	1	1E6570-73700	CAP, ROLLER	8	8						
9	1	1E6570-73730	BOLT, M6X8	8	8						
10	1	1E6570-73880	SEAL, KCYX25X42X8	8	8						
11	1	22252-000421	CIRCLIP 42	16	16						
12	1	24101-060044	BEARING, BALL 6004	16	16						
13	1	26043-100302	BOLT, M10X 30	16	16						

Fig.34. ACTUATOR

34 . ACTUATOR



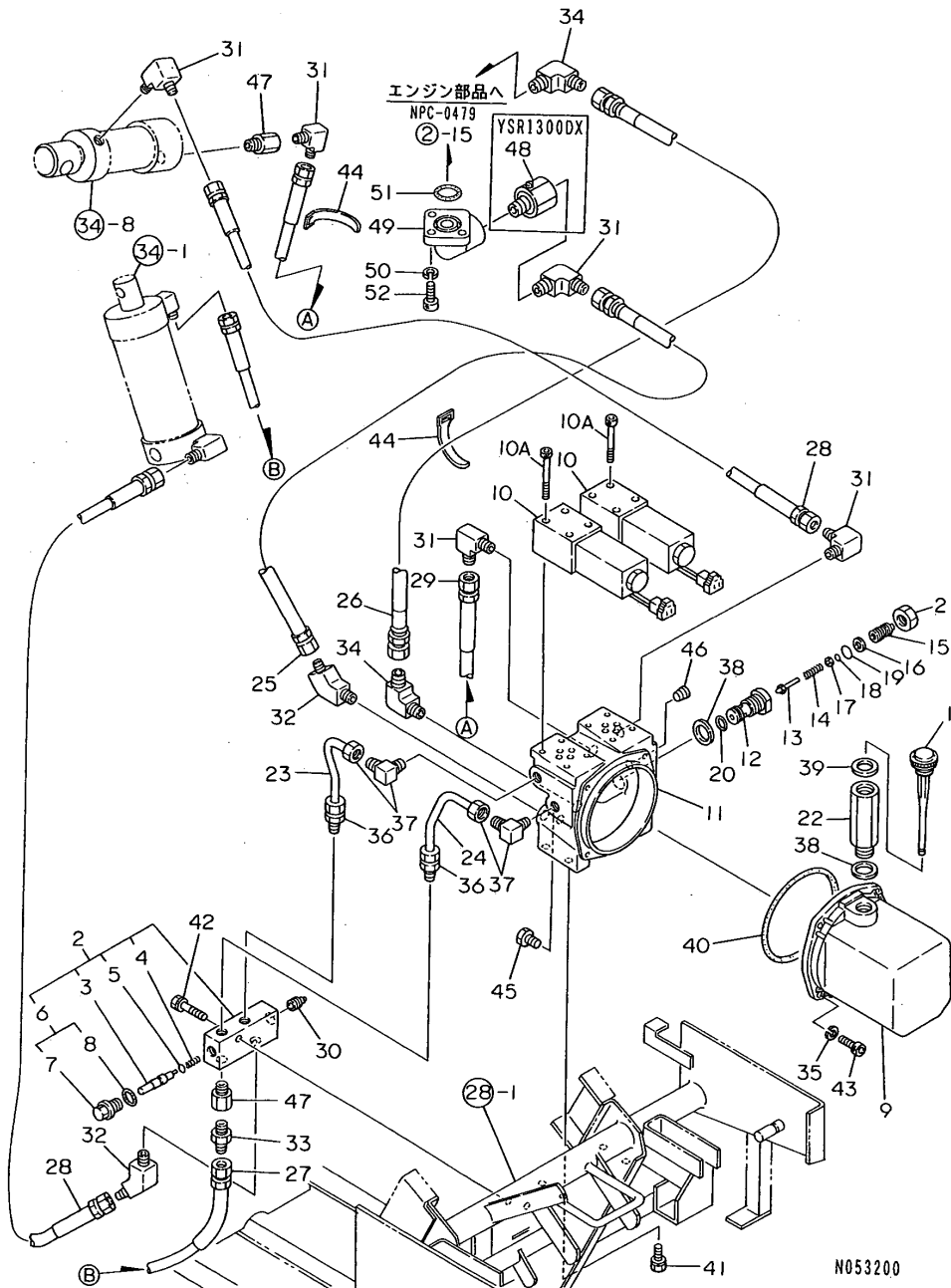
(A)=YSR1300DX
(B)=YSR1600DX
(C)=

(D)=
(E)=
(F)=

No.	Lev.	Parts No.	Description	Qty						I	R
				(A)	(B)	(C)	(D)	(E)	(F)		
1	1	1N1910-42010	CYLINDER 55X104,HYD.	1	1						
2	1	1N1910-42310	PIN 140X110,FLAT HD.	1	1						
3	1	1E6030-67030	ELBOW, 90	2	2						
4	1	1E6760-67100	PIN, CYLINDER	1	1						
5	1	22137-140000	WASHER, 14	1	1						
6	1	22417-400320	PIN, COTTER 4.0X32	1	1						
7	1	26016-080164	BOLT M 8X 16	1	1						
8	1	1N1910-42510	CYLINDER 45X60,HYDR.	1	1						
9	1	1N1910-42710	PIN 20X105,FLAT HD.	1	1						
10	1	22417-320400	PIN, COTTER 3.2X40	2	2						
11	1	1N1910-42720	PIN 20X72	1	1						
12	1	22417-320400	PIN, COTTER 3.2X40	1	1						

Fig.35. HYDRAULIC PIPING

35. HYDRAULIC PIPING

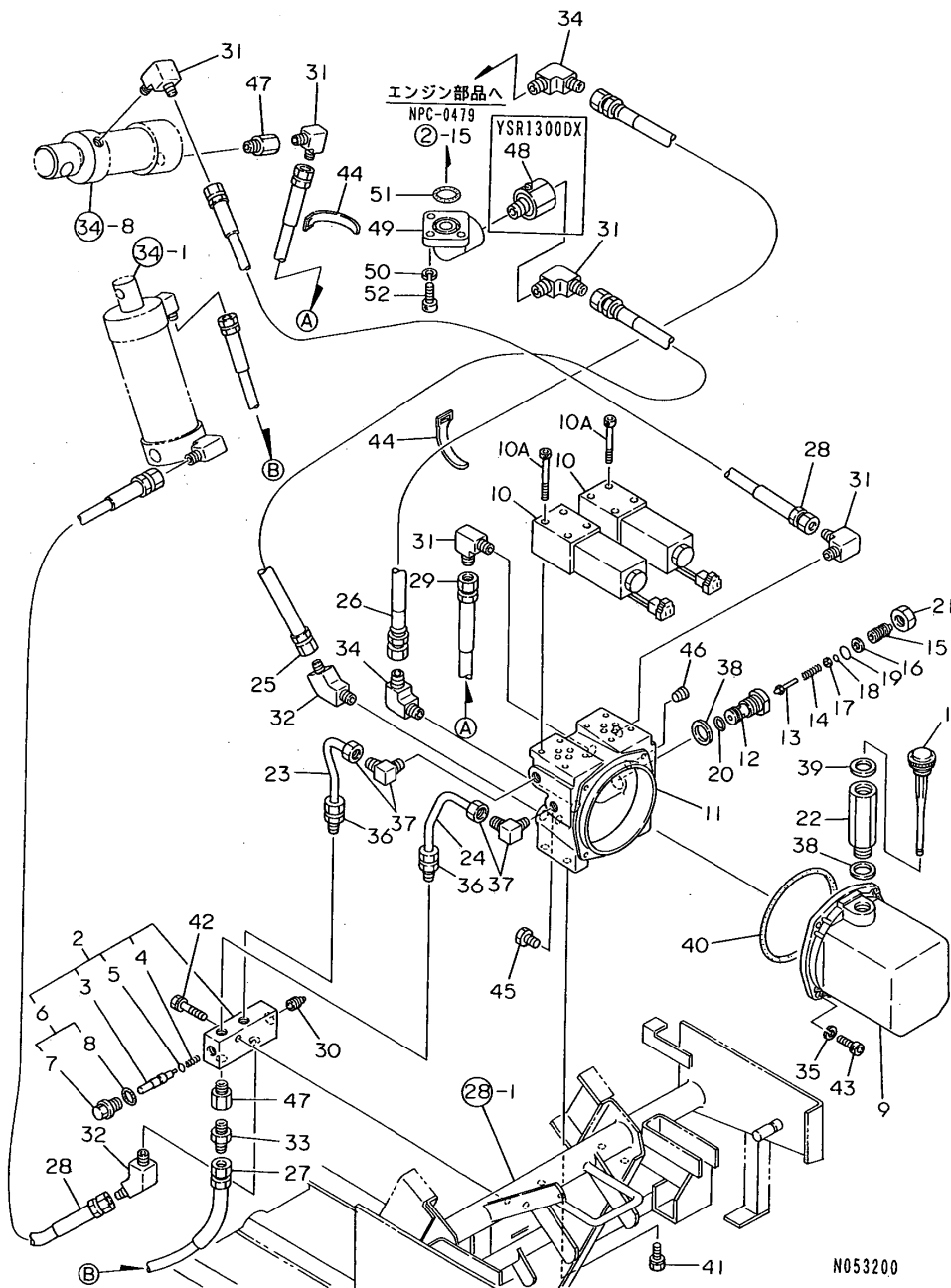


N053200

No.	Lev.	Parts No.	Description	Q'ty						I	R
				(A)	(B)	(C)	(D)	(E)	(F)		
1	1	1E6472-66230	PLUG,OIL CHECK	1	1						
2	1	1N1910-45540	VALVE COMP.,CHECK	1	1						
3	2	1N1910-45570	SPOOL,CHECK VALVE	1	1						
4	2	1N1910-45580	SPRING,CHECK VALVE	1	1						
5	2	24311-00060	O-RING, 1AP6.0	1	1						
6	2	7A1070-28690	OIL CAP 14	2	2						
7	3	1A1070-28690	PLUG, OIL 14	2	2						
8	3	24311-000160	O-RING, 1AP16.0	2	2						
9	1	1N1740-41020	TANK,HYDRAULIC	1	1						
10	1	1N1740-41110	VALVE	2	2						
10A	1	26450-050450	BOLT 5X45,HEX.SKT.HD	8	8						
11	1	1N1910-45010	BLOCK,VALVE	1	1						
12	1	1N1740-41310	BODY,RELIEF	1	1						
13	1	1N1740-41320	VALVE,RELIEF	1	1						
14	1	1N1740-41330	SPRING,RELIEF	1	1						
15	1	1N1740-41340	BOLT,RELIEF ADJUST'G	1	1						
16	1	1N1740-41350	RING P11,BACKUP	1	1						
17	1	22137-040000	WASHER, 4	1	1						
18	1	24311-000040	O-RING, 1AP4.0	1	1						
19	1	24311-000110	O-RING, 1AP11.0	1	1						
20	1	24311-000125	O-RING, 1AP12.5	1	1						
21	1	26776-140002	NUT, LOCK M14	1	1						
22	1	1N1910-45030	PIPE,OIL SUPPLY	1	1						
23	1	1N1910-45110	PIPE A,HYDRAULIC	1	1						
24	1	1N1910-45120	PIPE B,HYDRAULIC	1	1						
25	1	1N1910-45130	HOSE 180,HYDRAULIC	1	1						
26	1	1N1910-45140	HOSE 340,HYDRAULIC	1	1						
27	1	1N1910-45150	HOSE 600,HYDRAULIC	1	1						
28	1	1N1910-45160	HOSE 930,HYDRAULIC	2	2						
29	1	1N1910-45170	HOSE 820,HYDRAULIC	1	1						
30	1	1N1910-45560	VALVE,CHECK	1	1						
31	1	1E6030-67030	ELBOW, 90	5	5						
32	1	1E6020-67240	ELBOW, 45	2	2						
33	1	1E6090-67810	ADAPTER	1	1						
34	1	1E6141-68130	ELBOW, 90 3/8	2	2						
35	1	22217-060000	WASHER, SPRING 6	4	4						
36	1	23102-080021	CONNECTOR, 8-R1/4	2	2						
37	1	23169-080021	ELBOW, 8XR1/4	2	2						
38	1	23414-200026	GASKET, 20X1.0	2	2						
39	1	23418-200000	GASKET, 20X1.0	1	1						
40	1	24321-001200	O-RING, 1AG120.0	1	1						
41	1	26016-080164	BOLT M 8X 16	4	4						
42	1	26016-080354	BOLT, M8X 35	2	2						
43	1	26450-060202	BOLT, M6X 20	4	4						
44	1	1E6102-84960	BAND 250,WIRE LOCK	2	2						
45	1	7A1040-48070	PLUG, OIL	1	1						
46	1	23871-020000	PLUG, R02	1	1						
47	1	1N1910-45210	THROTTLE 1.0	2	2						
48	1	1N1910-45310	FILTER ASSY, LINE	1							W
(A)=F810001)											
49	1	1N1910-45050	BEND 1/4	1	1						

Fig.35. HYDRAULIC PIPING

35. HYDRAULIC PIPING



N053200

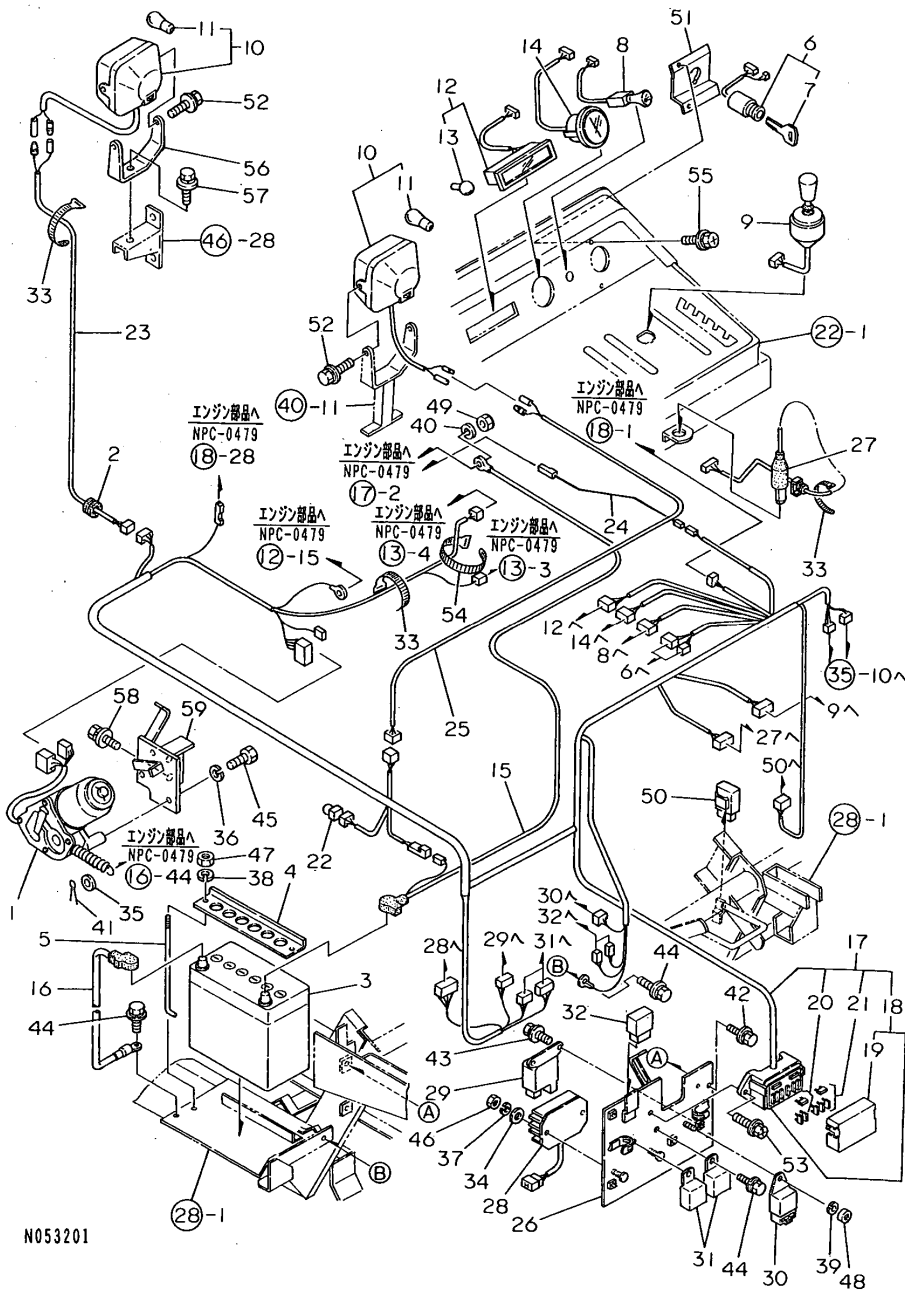
(A)=YSR1300DX
 (B)=YSR1600DX
 (C)=

(D)=
 (E)=
 (F)=

No.	Lev.	Parts No.	Description	Q'ty						I	R
				(A)	(B)	(C)	(D)	(E)	(F)		
50	1	22217-060000	WASHER, SPRING 6	3	3						
51	1	24311-000200	O-RING, 1AP20.0	1	1						
52	1	26450-060202	BOLT, M6X 20	3	3						

Fig.36. ELECTRICAL PARTS

36. ELECTRICAL PARTS



N053201

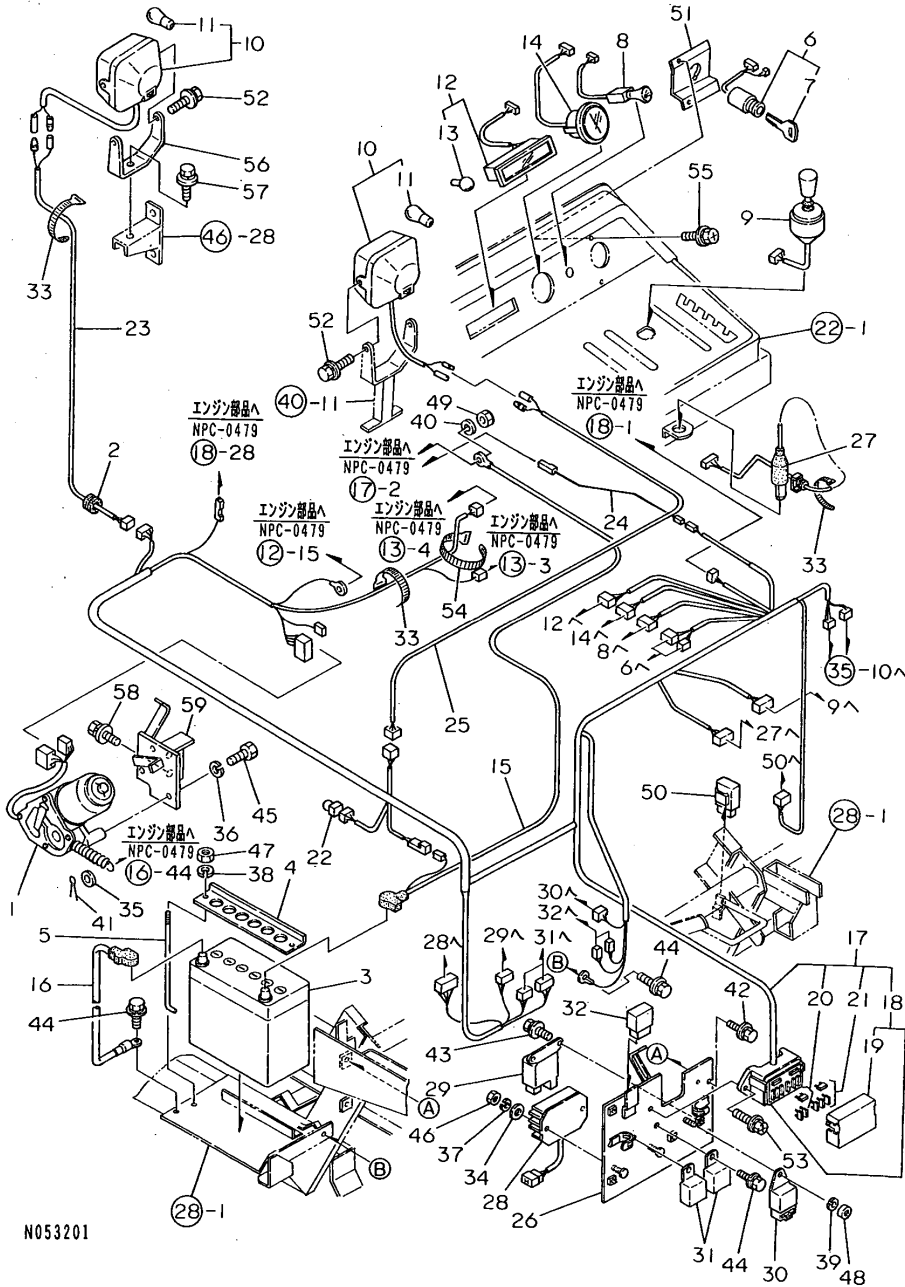
(A)=YSR1300DX
(B)=YSR1600DX
(C)=

(D)=
(E)=
(F)=

No.	Lev.	Parts No.	Description	Qty						I	R
				(A)	(B)	(C)	(D)	(E)	(F)		
1	1	1N1910-02400	MOTOR,FUEL STOP	1	1						
2	1	1E6650-04670	GROMMET 14	1	1						
3	1	1N1910-51010	LABEL,FUSE	1	1						
4	1	1N1910-51050	RETAINER,BATTERY	1	1						
5	1	1N1730-51071	BOLT,BATTERY CLAMP'G	2	2						
6	1	198360-52110	SWITCH ASSY, START	1	1						
7	2	198360-52160	KEY ASSY	1	1						
8	1	1N1910-51150	SWITCH,LIGHT	1	1						
9	1	1N1740-51200	SWITCH	1	1						
10	1	1N1910-51200	HEADLIGHT	2	2						
11	2	1N1730-51131	LAMP 12V-15W G23	2	2						
12	1	1N1910-51251	OK MONITOR	1	1						
13	2	1E6480-82280	BULB,12V-34W	6	6						
14	1	1N1910-51260	HOUR METER	1	1						
15	1	1N1910-51400	CABLE A,BATTERY	1	1						
16	1	1N1910-51411	CABLE B,BATTERY	1	1						
16-1	1	1E6650-83080	CABLE, BATTERY	1							R
(A=F810001)											
17	1	1N1910-51420	HARNESS,WIRE	1	1						
18	2	1N1910-51300	BOX COMP.,FUSE	1	1						
19	3	1N1910-51320	COVER	1	1						
20	2	1N1910-51340	FUSE 5A,AUTO	3	3						
21	2	1N1910-51350	FUSE 10A,AUTO	4	4						
22	2	1E6691-84050	LINK, FUSIBLE 0.5	1	1						
23	1	1N1910-51430	HARNESS,SHOOTER	1	1						
24	1	1N1910-51440	CONNECTOR,STARTER	1	1						
25	1	1N1910-51450	HARNESS,BONNET	1	1						
26	1	1N1910-51511	PL.,ELEC.PARTS MTG.	1	1						
27	1	1N1910-51700	HARNESS KF,WIRE	1	1						
27-1	1	1N1730-51701	SWITCH,SAFETY	1							R
(A=F810001)											
28	1	121520-77710	LIMITER, CURRENT	1	1						
29	1	119650-77910	RELAY ASSY, GLOW	1	1						
30	1	119650-77900	CONTROLLER	1	1						
31	1	1E6650-82300	RELAY, A-2	2	2						
32	1	1E6910-82500	RELAY, CA-1A	1	1						
33	1	1E6102-84970	BAND 140,WIRE LOCK	7	7						
34	1	22137-060000	WASHER, 6	2	2						
35	1	22137-080000	WASHER, 8	1	1						
36	1	22217-050000	WASHER, SPRING 5	3	3						
37	1	22217-060000	WASHER, SPRING 6	2	2						
38	1	22217-060000	WASHER, SPRING 6	2	2						
39	1	22217-060000	WASHER, SPRING 6	1	1						
40	1	22217-080000	WASHER, SPRING 8	1	1						
41	1	22417-200200	PIN, COTTER 2.0X20	1	1						
42	1	26018-060164	BOLT M 6X 16	4	4						
43	1	26018-060164	BOLT M 6X 16	2	2						
44	1	26018-080164	BOLT M 8X 16	4	4						
45	1	26117-050162	BOLT M 5X 16 PLATED	3	3						
46	1	26717-060002	NUT, M6	2	2						
47	1	26717-060002	NUT, M6	2	2						

Fig.36. ELECTRICAL PARTS

36 . ELECTRICAL PARTS



N053201

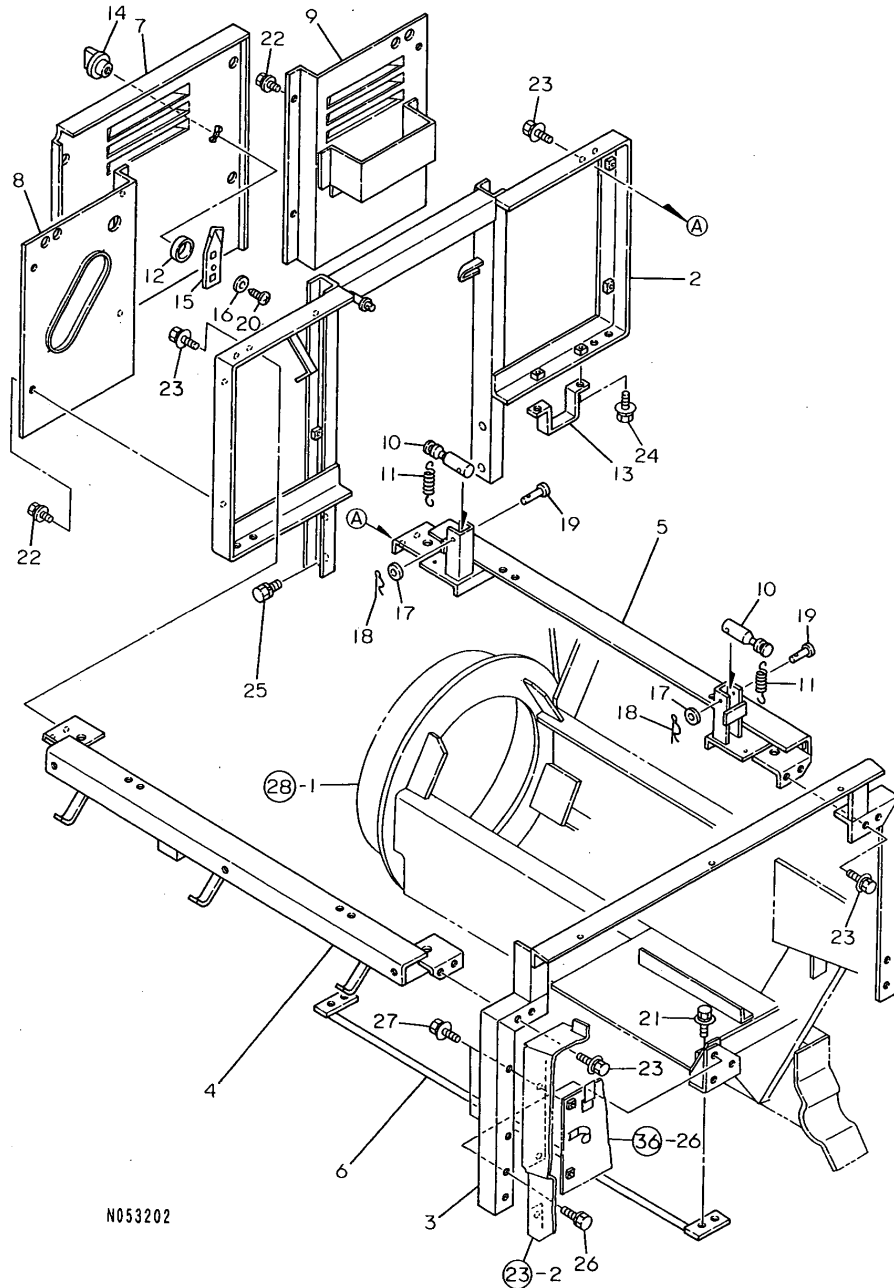
(A)=YSR1300DX
(B)=YSR1600DX
(C)=

(D)=
(E)=
(F)=

No.	Lev.	Parts No.	Description	Q'ty						I	R
				(A)	(B)	(C)	(D)	(E)	(F)		
48	1	26717-060002	NUT, M6	1	1						
49	1	26717-080002	NUT, M8	1	1						
50	1	1N1740-51410	DIODE UNIT 2AX4	1	1						
51	1	1N1910-32670	PLATE,KEY MOUNTING	1	1						
52	1	26018-060164	BOLT M 6X 16	2	2						
53	1	26033-060162	SCREW, M6X16	2	2						
54	1	1E6102-84960	BAND 250,WIRE LOCK	2	2						
55	1	1E4320-99120	BOLT, M6X16 CRH	2	2						
56	1	1N1730-61380	STAY,LIGHT UPPER	1	1						
57	1	26018-080204	BOLT M 8X 20	1	1						
58	1	26018-080204	BOLT M 8X 20	2	2						
59	1	1N1910-12220	SEAT,STOP MOTOR MTG.	1	1						

Fig.37. BONNET KEEL

37 . BONNET KEEL



N053202

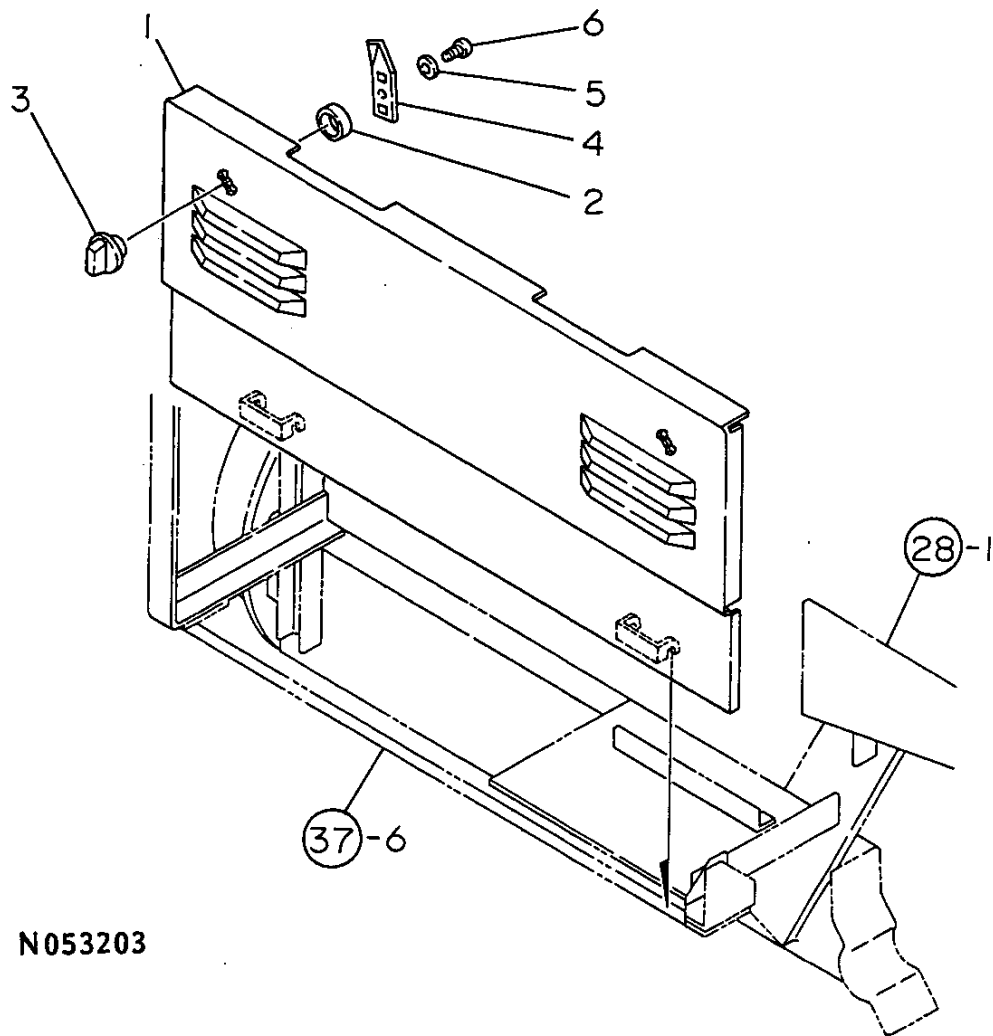
(A)=YSR1300DX
(B)=YSR1600DX
(C)=

(D)=
(E)=
(F)=

No.	Lev.	Parts No.	Description	Qty						I	R
				(A)	(B)	(C)	(D)	(E)	(F)		
2	1	1N1910-61310	KEEL COMP.,FRONT	1	1						
3	1	1N1910-61410	KEEL COMP.,REAR	1	1						
4	1	1N1910-61500	KEEL L COMP.,UPPER	1	1						
5	1	1N1910-61550	KEEL R COMP.,UPPER	1	1						
6	1	1N1910-61660	KEEL,BONNET LOWER	2	2						
7	1	1N1910-61700	PLATE,KEEL FRONT	1	1						
8	1	1N1910-61690	PLATE L,KEEL FRONT	1	1						
8-1	1	1N1910-61691 (A=F810001)	PL.L CMP.,KEEL FRONT	1							N
9	1	1N1910-61720	PLATE R,KEEL FRONT	1	1						
9-1	1	1N1910-61721 (A=F810001)	PLATE R,KEEL FRONT	1							N
10	1	1N1910-61870	PIN,BONNET LOCK	2	2						
11	1	1N1910-61880	SPRING,BONNET LOCK	2	2						
12	1	1N1910-61950	COLLAR 25X32X8.2	2	2						
13	1	1N1910-61960	SUPPORT,HYDRO.HOSE	1	1						
14	1	1E6460-91571	KNOB,SACKER	2	2						
14-1	1	1E6460-91572		2	2						N
14-2	1	1E6460-91573 (A=F810001)	KNOB, SACKER	2							N
15	1	1E6460-91580	STOPPER	2	2						
16	1	22137-050000	WASHER, 5	2	2						
17	1	22137-060000	WASHER, 6	2	2						
18	1	22372-060000	PIN, SNAP 6	2	2						
19	1	22487-060240	PIN, H 6X 24	2	2						
20	1	22857-500120	SCREW, 5X12	2	2						
20-1	1	1E6770-91500 (A=F710001) (B=F710001)	SCREW, M2.5X16	2	2						S
21	1	26018-060164	BOLT M 6X 16	8	8						
22	1	26018-060164	BOLT M 6X 16	8	8						
23	1	26018-060164	BOLT 6X16 W/L.W.	8	8						
24	1	26018-060164	BOLT 6X16 W/L.W.	2	2						
25	1	26016-080204	BOLT M 8X 20	4	4						
26	1	26016-080204	BOLT M 8X 20	4	4						
27	1	26018-060164		2	2						

Fig.38. BONNET L

38 . BONNET L



N053203

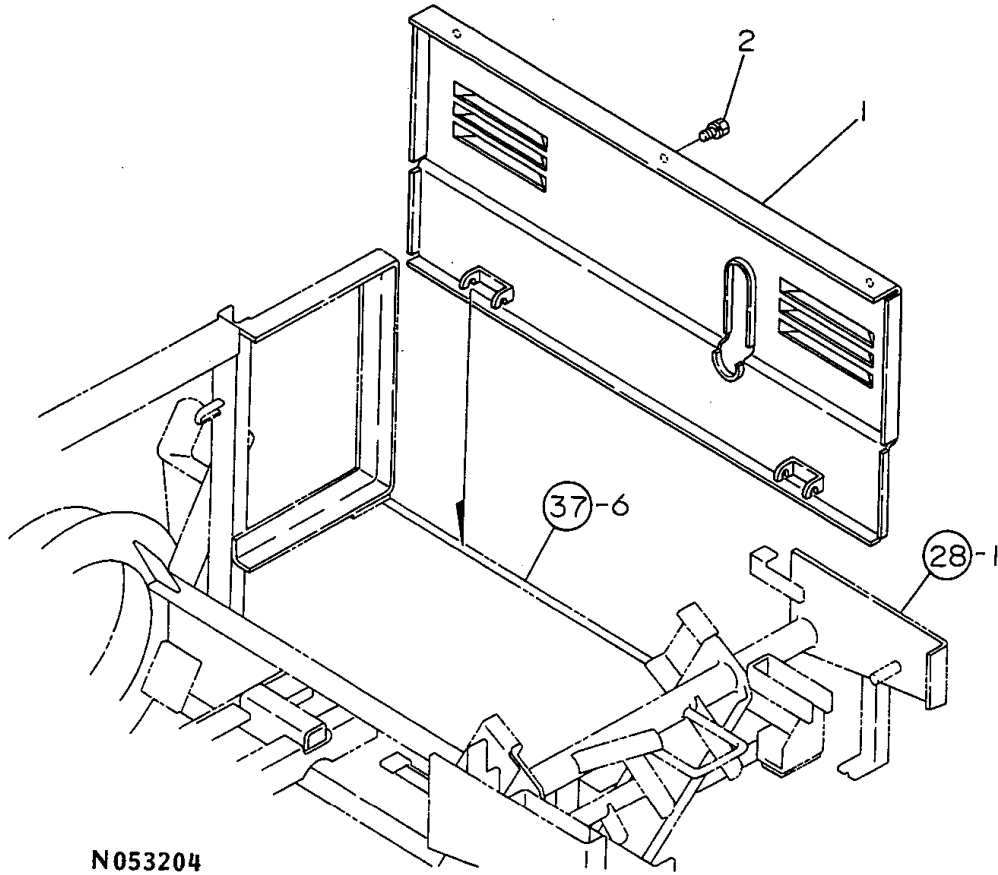
(A)=YSR1300DX
(B)=YSR1600DX
(C)=

(D)=
(E)=
(F)=

No.	Lev.	Parts No.	Description	Q'ty						I	R
				(A)	(B)	(C)	(D)	(E)	(F)		
1	1	1N1910-61110	BONNET L COMPL.	1	1						
2	1	1N1910-61950	COLLAR 25X32X8.2	2	2						
3	1	1E6460-91571	KNOB,SACKER	2	2						
3-1	1	1E6460-91572 (A=F710001) (B=F710001)		2	2						N
3-2	1	1E6460-91573 (A=F810001)	KNOB, SACKER	2							N
4	1	1E6460-91580	STOPPER	2	2						
5	1	22137-050000	WASHER, 5	2	2						
6	1	22857-500120	SCREW, 5X12	2	2						
6-1	1	1E6770-91500 (A=F710001) (B=F710001)	SCREW, M2.5X16	2	2						S

Fig.39. BONNET R

39 BONNET R



N053204

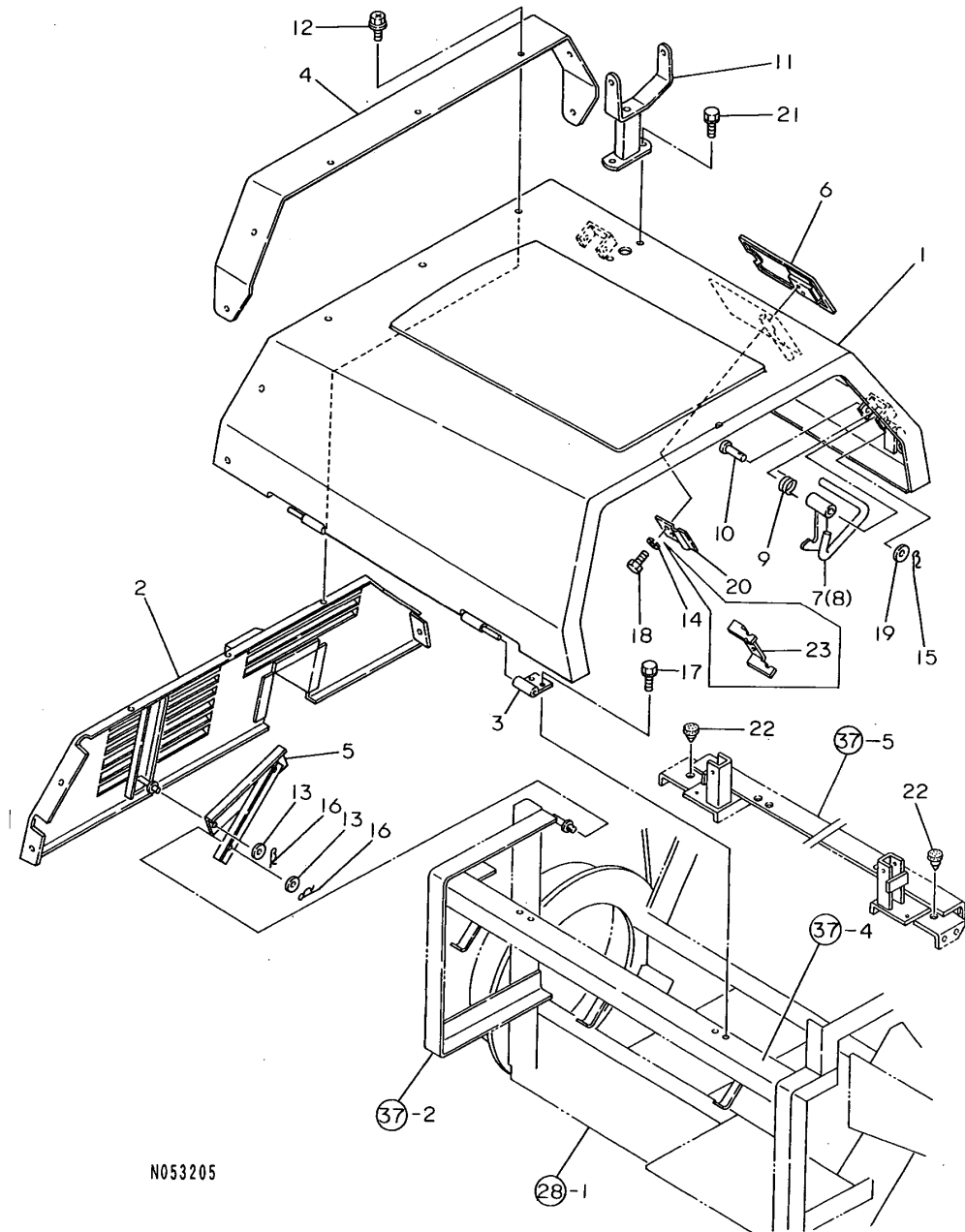
(A)=YSR1300DX
(B)=YSR1600DX
(C)=

(D)=
(E)=
(F)=

No.	Lev.	Parts No.	Description	Q'ty						I	R
				(A)	(B)	(C)	(D)	(E)	(F)		
1	1	1N1910-61210	BONNET R COMPL.	1	1						
2	1	26018-060164	BOLT M 6X 16	3	3						

Fig.40. BONNET

40 . BONNET



N053205

(A)=YSR1300DX
(B)=YSR1600DX
(C)=

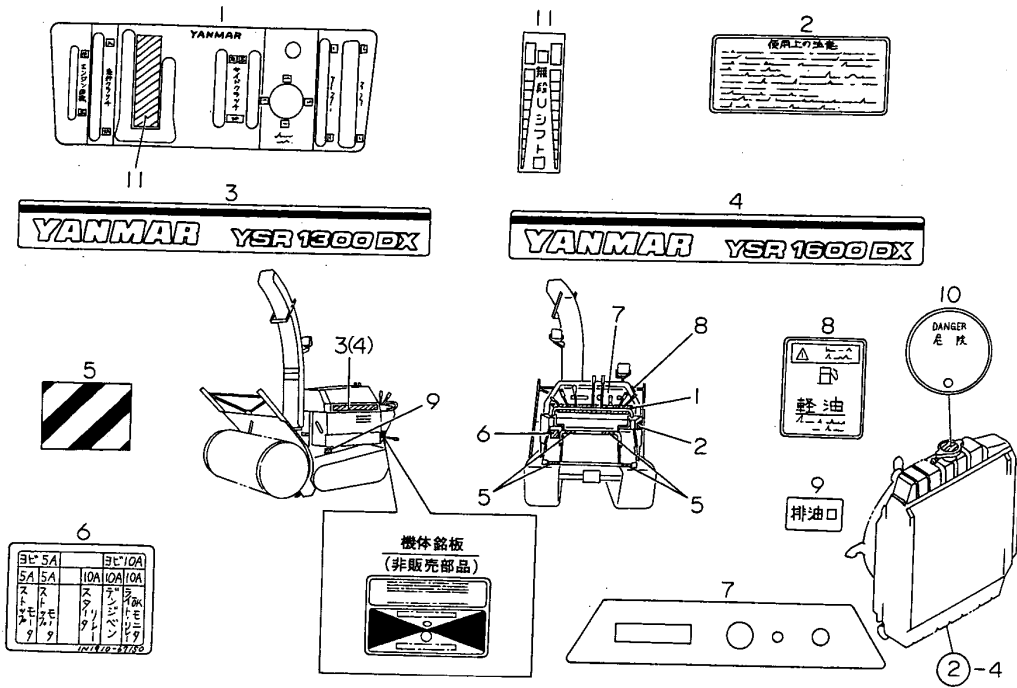
(D)=
(E)=
(F)=

No.	Lev.	Parts No.	Description	Q'ty						I	R
				(A)	(B)	(C)	(D)	(E)	(F)		
1	1	1N1910-61010	BONNET COMPL.	1	1						
2	1	1N1910-61070	FRONT COMP.,BONNET	1	1						
3	1	1N1730-61090	HINGE B,BONNET	2	2						
4	1	1N1910-61180	MOLDINGS,BONNET	1	1						
5	1	1N1910-61190	LATCH,BONNET	1	1						
6	1	1N1910-61750	COVER COMP.,OIL FEED	1	1						
7	1	1N1910-61770	HANDLE,BONNET FRONT	1	1						
8	1	1N1910-61780	HANDLE,BONNET REAR	1	1						
9	1	1N1910-61830	SPRING,BONNET HANDLE	2	2						
10	1	22487-100500	PIN, H10X 50	2	2						
11	1	1N1910-61900	STAY COMP.,LIGHT	1	1						
12	1	1E4320-99120	BOLT, M6X16 CRH	7	7						
13	1	22137-080000	WASHER, 8	2	2						
14	1	22217-050000	WASHER, SPRING 5	2	2						
15	1	22372-100000	PIN, SNAP 10	2	2						
16	1	22372-080000	PIN, SNAP 8	2	2						
17	1	26018-060164	BOLT M 6X 16	4	4						
18	1	26117-050102	BOLT M 5X 10 PLATED	2	2						
19	1	22137-100000	WASHER, 10	2	2						
20	1	194555-61280	SPRING	1	1						
21	1	26018-060164	BOLT M 6X 16	2	2						
22	1	1N1730-61190	RUBBER,CONTACT	2	2						
23	1	1N1910-61290	GUIDE,OIL FEED COVER	1	1						W

(A=F710171) (B=F710122)

Fig.41. LABELS

41 LABELS



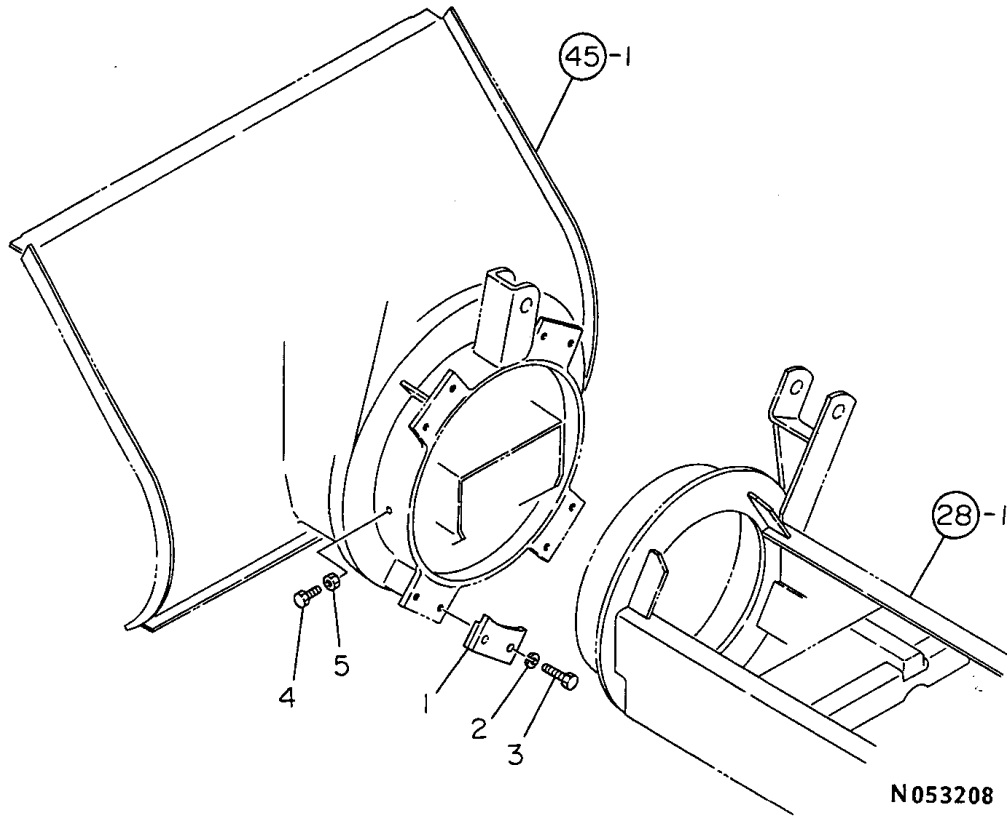
(A)=YSR1300DX
(B)=YSR1600DX
(C)=

(D)=
(E)=
(F)=

No.	Lev.	Parts No.	Description	Q'ty						I	R
				(A)	(B)	(C)	(D)	(E)	(F)		
1	1	1N1910-67050	LABEL,CONTROL PANEL	1	1						
2	1	1N1730-67073	LABEL,CAUTION	1	1						
3	1	1N1910-67110	MARK,MODEL	2							
4	1	1N1920-67110	MARK,MODEL		2						
5	1	1N1730-67151	MARK 1,DANGER	4	1						
6	1	1N1910-67150	LABEL,FUSE	1	1						
7	1	1N1910-67070	LABEL,FRONT PANEL	1	1						
8	1	1E6930-97300	LABEL, FUEL	1	1						
9	1	1N1910-67170	LABEL,WASTE OIL PORT	1	1						
10	1	1N1910-67180	PLATE,CAUTION	1	1						
11	1	1N1910-67060	LABEL,U-SHIFT	1	1						

Fig.42. SNOW REMOVING INSTALLING

42 . SNOW REMOVING INSTALLING



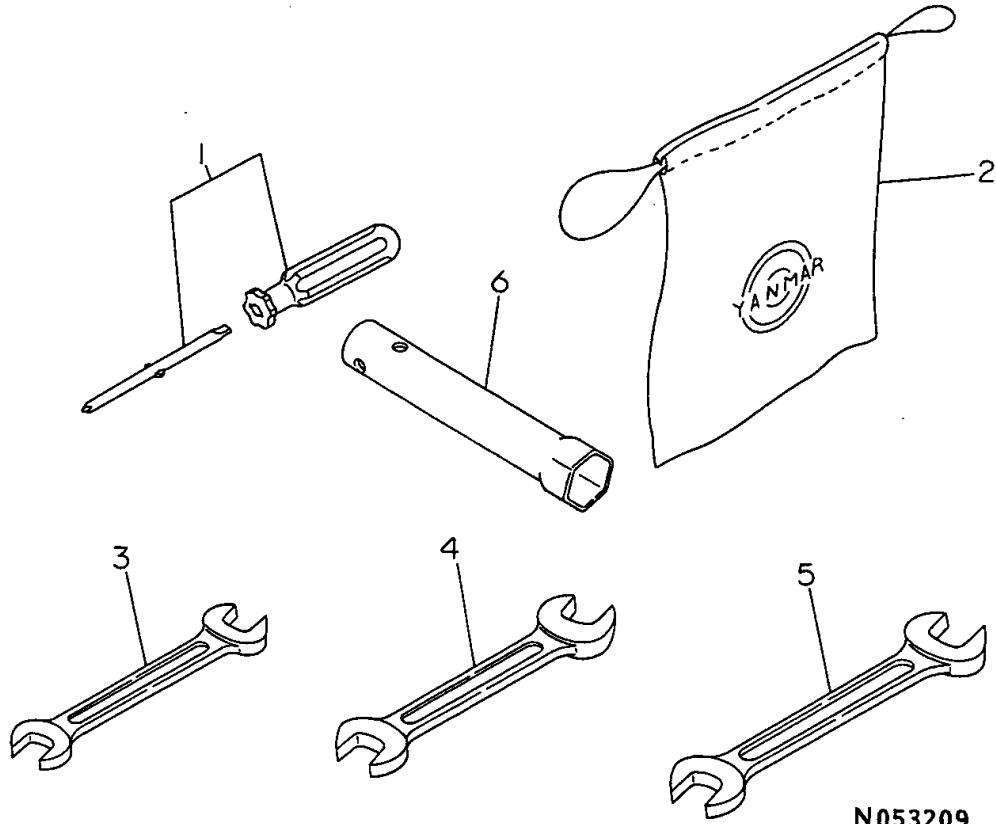
(A)=YSR1300DX
(B)=YSR1600DX
(C)=

(D)=
(E)=
(F)=

No.	Lev.	Parts No.	Description	Q'ty						I	R
				(A)	(B)	(C)	(D)	(E)	(F)		
1	1	1N1740-79110	SUPPORT,ROLL'G GUIDE	4	4						
2	1	22217-120000	WASHER, SPRING 12	8	8						
3	1	26116-120402	BOLT, M12X 40 PLATED	8	8						
4	1	26117-060102	BOLT M 6X 10 PLATED	2	2						
5	1	26717-060002	NUT, M6	2	2						

Fig.43. TOOLS

43. TOOLS



N053209

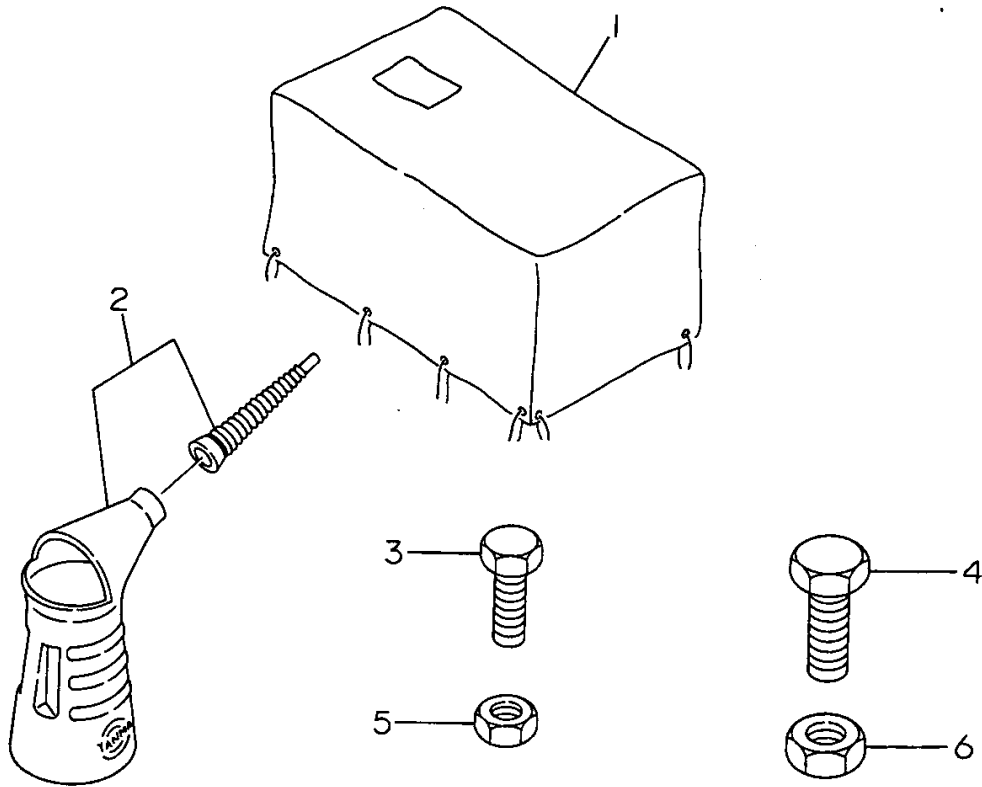
(A)=YSR1300DX
(B)=YSR1600DX
(C)=

(D)=
(E)=
(F)=

No.	Lev.	Parts No.	Description	Q'ty						I	R
				(A)	(B)	(C)	(D)	(E)	(F)		
1	1	1A1290-82050	SCREWDRIVER,COMBINAT	1	1						
2	1	1A1180-83000	BAG, TOOL	1	1						
2-1	1	1E6511-98910	BAG, TOOL	1	1						R
		(A=FXXXXXX) (B=FXXXXXX)									
3	1	28110-100120	SPANNER, 10X12	1	1						
4	1	28110-120140	SPANNER, 12X14	1	1						
5	1	28110-170190	SPANNER, 17X19	1	1						
6	1	28227-171400	BOX WRENCH	1	1						

Fig.44. ACCESSORIES

44 . ACCESSORIES



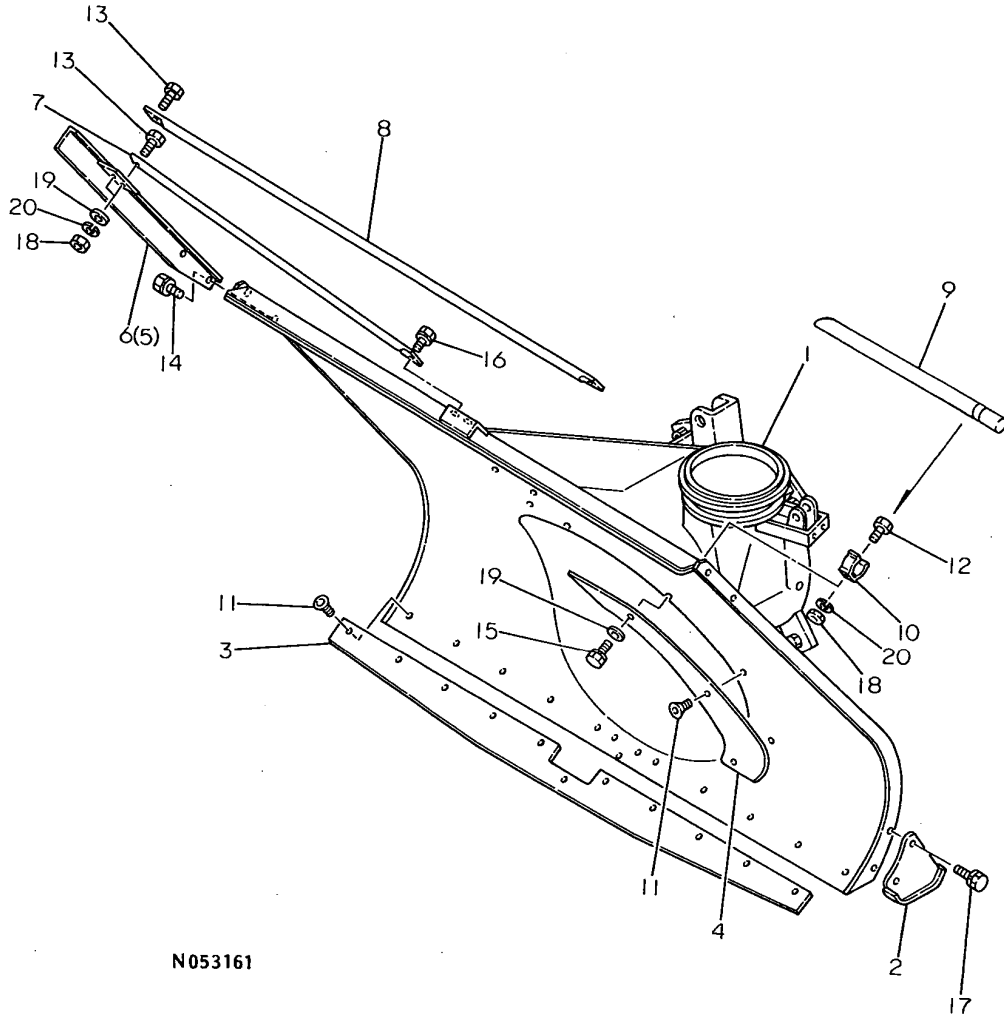
(A)=YSR1300DX
(B)=YSR1600DX
(C)=

(D)=
(E)=
(F)=

No.	Lev.	Parts No.	Description	Q'ty						I	R
				(A)	(B)	(C)	(D)	(E)	(F)		
1	1	1N1910-82100	COVER,BODY	1	1						
2	1	7E4133-99290	JUG ASSY, OIL	1	1						
3	1	26018-080304	BOLT M8X 30	5	5						
4	1	26018-100304	BOLT, M10X 30	10	10						
5	1	26707-080002	NUT, M8	5	5						
6	1	26707-100002	NUT, M10	10	10						

Fig.45. SNOW REMOVING FRAME

45 . SNOW REMOVING FRAME



N053161

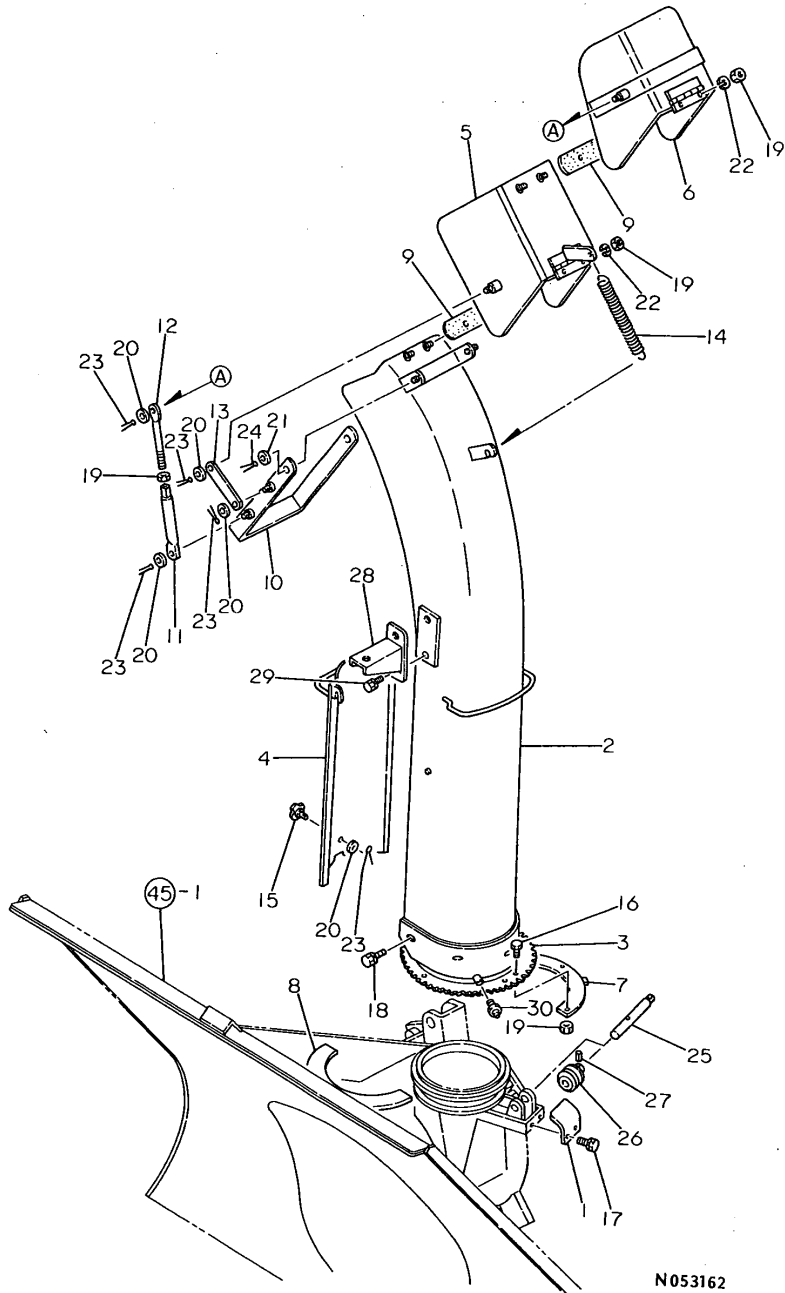
(A)=YSR1300DX
(B)=YSR1600DX
(C)=

(D)=
(E)=
(F)=

No.	Lev.	Parts No.	Description	Q'ty						I	R
				(A)	(B)	(C)	(D)	(E)	(F)		
1	1	1N1953-11000	FRAME CMP.,SNOW REM.	1	1						
2	1	1N1630-81000	SLEDGE L	2	2						
3	1	1N1953-19010	EDGE	1	1						
4	1	1N1953-19020	PLATE,SHIELDING	1	1						
5	1	1N1673-21000	PLATE L CMP,SNOW CUT	1	1						
6	1	1N1673-22000	PLATE R CMP,SNOW CUT	1	1						
7	1	1N1630-70090	BKR A,SNOW CUTTING	2	2						
8	1	1N1630-70100	BKR B,SNOW CUTTING	1	1						
9	1	1N1803-99010	ROD,SNOW SHOVELING	1	1						
10	1	1N1803-99020	METAL,LOCK	2	2						
11	1	1N1639-12170	SCREW 8X15,CRFHMC.	13	13						
12	1	26117-080162	BOLT M 8X 16 PLATED	2	2						
13	1	26117-080252	BOLT M 8X 25 PLATED	4	4						
14	1	26013-080164	BOLT M 8X 16	4	4						
15	1	26013-080204	BOLT M 8X 20	1	1						
16	1	26013-080254	BOLT M 8X 25	2	2						
17	1	26013-100254	BOLT, M10X 25	4	4						
18	1	26717-080002	NUT, M8	6	6						
19	1	22137-080000	WASHER, 8	5	5						
20	1	22217-080000	WASHER, SPRING 8	6	6						

Fig.46. CHUTE

46 . CHUTE



N053162

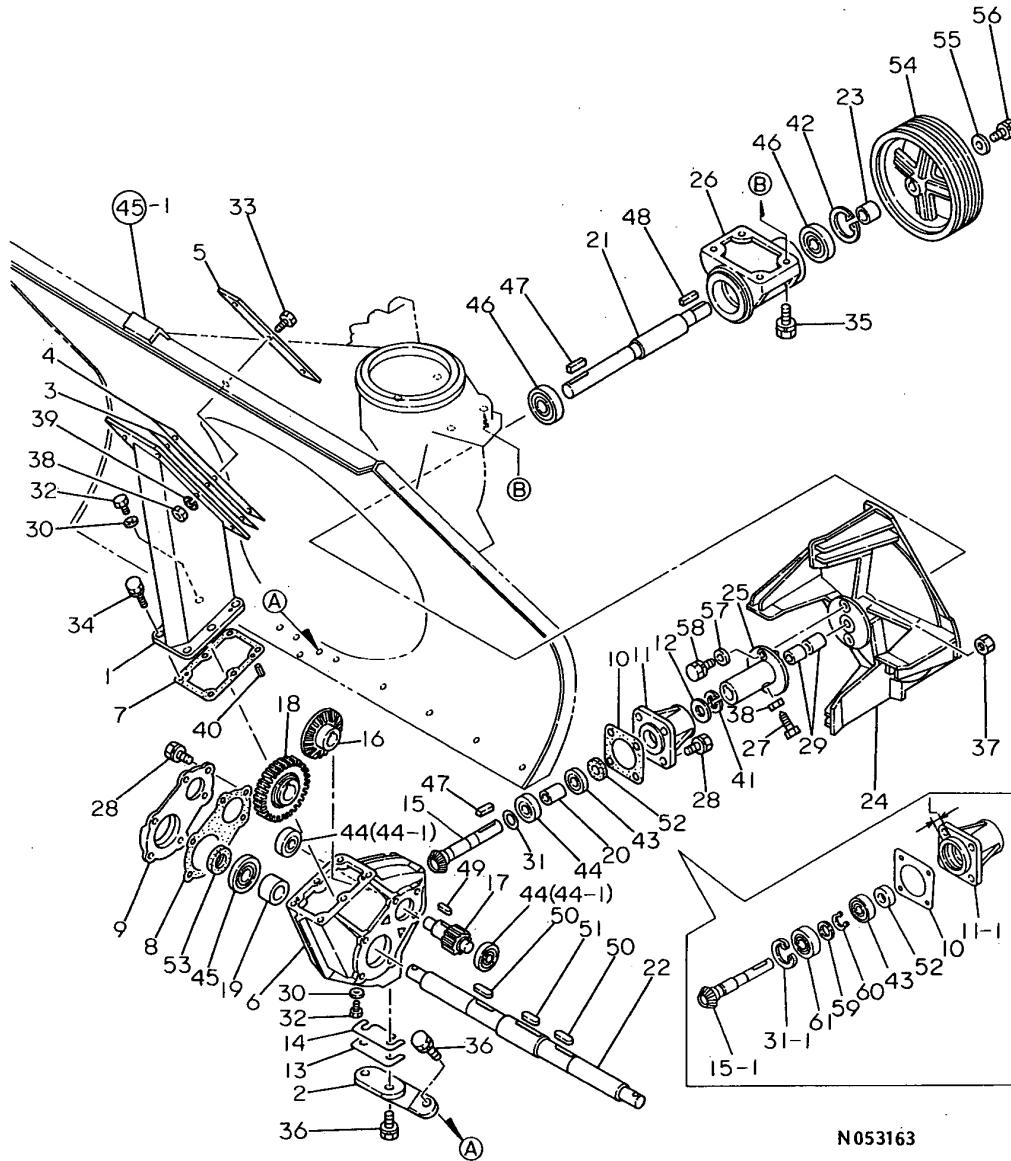
(A)=YSR1300DX
(B)=YSR1600DX
(C)=

(D)=
(E)=
(F)=

No.	Lev.	Parts No.	Description	Q'ty						I	R
				(A)	(B)	(C)	(D)	(E)	(F)		
1	1	1N1683-19010	COVER,WORM	1	1						
2	1	1N1863-31000	CHUTE 1200 CMP,2-STG	1	1						
3	1	1N1673-34000	BASE COMPL.,CHUTE	1	1						
4	1	1N1673-32000	COVER,CHUTE	1	1						
5	1	1N1763-33000	CAP A COMP.,CHUTE	1	1						
6	1	1N1763-34000	CAP B COMP.,CHUTE	1	1						
7	1	1N1953-31000	CLAMP 13DX CMP,CHUTE	1	1						
8	1	1N1673-39010	CLAMP,CHUTE	1	1						
9	1	1N1673-39030	RUBBER,CHUTE	2	2						
10	1	1N1763-35000	ARM CMP,CHUTE CONTR.	1	1						
11	1	1N1763-36000	ROD COMP.,CHUTE LINK	2	2						
11-1	1	1N1763-39030	ROD,CHUTE LINK	2	2						R
(A=FXXXXXX) (B=FXXXXXX)											
12	1	1N1763-39010	ROD,ADJUSTING	2	2						
13	1	1N1763-39020	ARM,LINK	2	2						
14	1	1N1600-71570	COIL SPRING 17.2X144	1	1						
15	1	1N1609-11040	THUMBSCREW	1	1						
16	1	26116-080202	BOLT, M8X 20 PLATED	6	6						
17	1	26013-080164	BOLT M 8X 16	2	2						
18	1	26013-080202	BOLT, M8X 20	5	5						
19	1	26717-080002	NUT, M8	12	12						
20	1	22137-080000	WASHER, 8	9	9						
21	1	22137-100000	WASHER, 10	2	2						
22	1	22217-080000	WASHER, SPRING 8	4	4						
23	1	22417-250160	PIN, COTTER 2.5X16	9	9						
24	1	1N1600-72160	PIN 3X20,COTTER	2	2						
25	1	1N1957-59010	SHAFT,WORM	1	1						
26	1	1N1600-71210	WORM	1	1						
27	1	22351-030025	PIN, SPRING 3.0X25	1	1						
28	1	1N1678-35000	STAY,CHUTE LIGHT	1	1						
29	1	26013-080124	BOLT M 8X 12	2	2						
30	1	24761-060000	NIPPLE, GREASE MT6X1	1	1						W
(A=FXXXXXX) (B=FXXXXXX)											

Fig.47. AUGER GEAR CASE

47 AUGER GEAR CASE



(A)=YSR1300DX
(B)=YSR1600DX
(C)=

(D)=
(E)=
(F)=

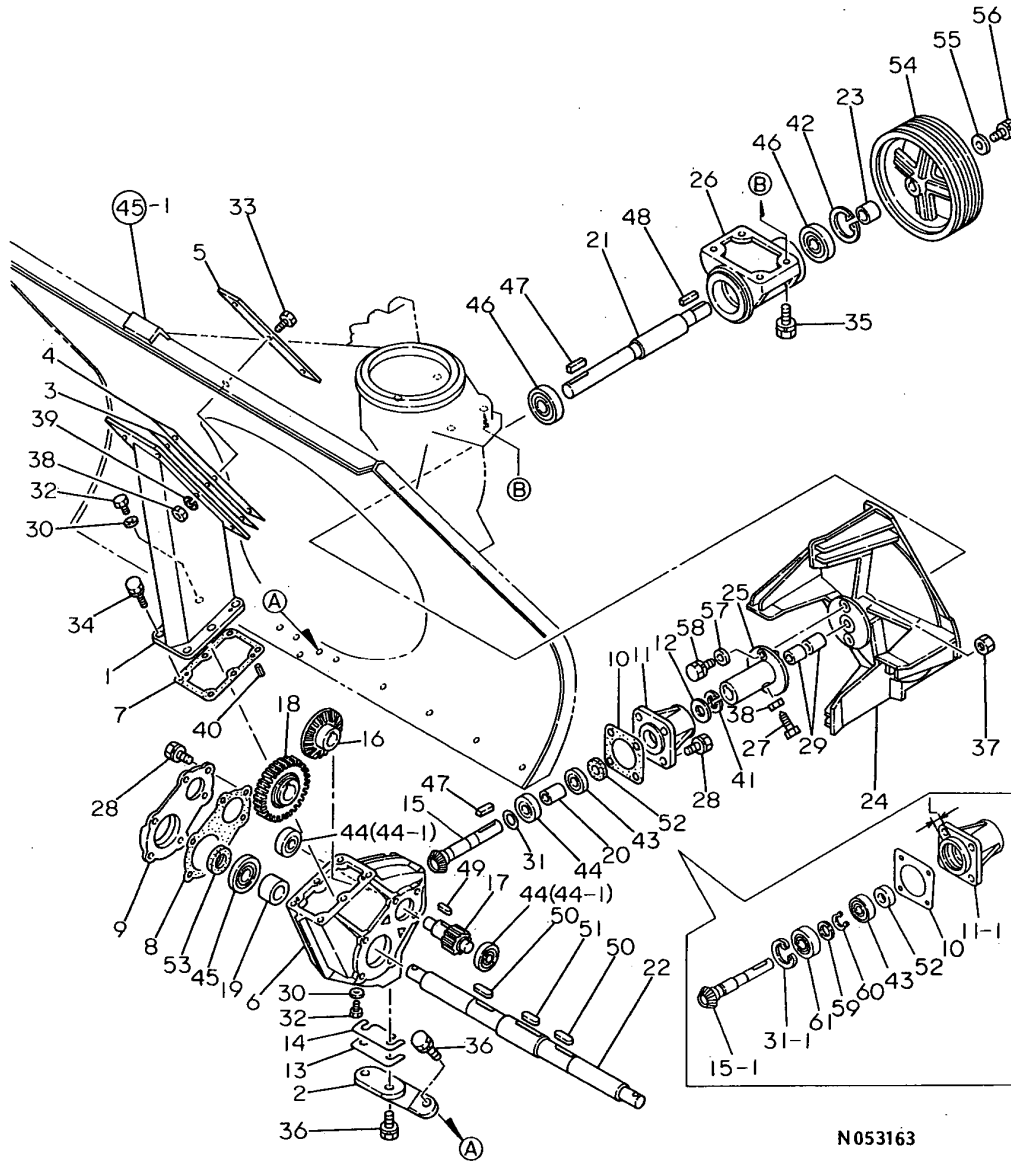
No.	Lev.	Parts No.	Description	Q'ty						I	R
				(A)	(B)	(C)	(D)	(E)	(F)		
1	1	1N1953-12000	SUPPORT,AGR.GR.CASE	1	1						
2	1	1N1600-73540	SUPPORT CMP,GR.CASE	1	1						
2-1	1	1N1953-14000	SUPPORT CMP.,GR.CASE	1	1						R
(A=FXXXXXX) (B=FXXXXXX)											
3	1	1N1953-19030	LINER 1.0,SUPPORT	2	2						
4	1	1N1953-19040	LINER 2.0,SUPPORT	5	5						
5	1	1N1953-19050	PLATE A,DOUBLING	2	2						
6	1	1N1673-19110	CASE,AUGER GEAR	1	1						
7	1	1N1610-70020	PACKING,AUGER GR.CS.	1	1						
8	1	1N1610-70030	PACKING,GR.CS.COVER	2	2						
9	1	1N1633-19041	COVER,AUGER GEAR CS.	2	2						
10	1	1N1610-70040	PACKING,INPUT HOUS'G	1	1						
11	1	1N1633-19060	HOUSING,INPUT	1	1						
11-1	1	1N1763-19060	HOUSING,INPUT	1	1						S 1
(A=F207236) (B=F207283)											
12	1	1N1610-70070	PLATE,PROTECTIVE	1	1						
13	1	1N1610-70050	LINER 2.0,GEAR CASE	1	1						
14	1	1N1610-70060	LINER 0.6,GEAR CASE	3	3						
15	1	1N1763-29010	GEAR M3X13,BEVEL	1	1						
15-1	1	1N1763-29011	GEAR M3X13,BEVEL	1	1						S
(A=F207236) (B=F207283)											
16	1	1N1763-29020	GEAR M3X33,BEVEL	1	1						
17	1	1N1763-29030	GEAR M3.5X10,BEVEL	1	1						
18	1	1N1763-29040	GEAR M3.5X35,SPUR	1	1						
19	1	1N1633-29050	COLLAR 40X40	1	1						
20	1	1N1610-70120	LINK COMPL.,CLUTCH	1	1						Z
(A=FXXXXXX) (B=FXXXXXX)											
21	1	1N1953-49010	SHAFT,BLOWER	1	1						
22	1	1N1633-49020	SHAFT,AUGER	1	1						
23	1	1N1953-49030	COLLAR 25X43	1	1						
24	1	1N1673-61000	BLOWER COMPL.	1	1						
25	1	1N1953-62000	JOINT COMP.,AUGER	1	1						
26	1	1N1600-70880	CASE,BLOWER BEARING	1	1						
27	1	1N1639-11010	BOLT,MACHINE	1	1						
28	1	1N1600-73590	BOLT W/SP.SM.PRECORD	16	16						
29	1	1N1639-15010	BUSH ML2530,M LINER	2	2						
30	1	1N1633-19070	PIN 20X65	2	2						
31	1	1N1763-99010	SHIM 25X35X0.3	1	1						
31-1	1	22252-000520	RING, 52	1	1						S
(A=F207236) (B=F207283)											
32	1	26027-100102	BOLT 10X10,HEX.	2	2						
33	1	26117-100302	BOLT M10X 30	6	6						
34	1	26013-080254	BOLT M 8X 25	6	6						
35	1	26013-100254	BOLT, M10X 25	4	4						
36	1	26013-100252	BOLT, M10X 25	4	4						
37	1	26707-080002	NUT, M8	1	1						
38	1	26607-100002	NUT, M10	7	7						
39	1	22217-100000	WASHER, SPRING 10	6	6						
40	1	1N1600-72440	PIN 6X16,SPRING	2	2						
41	1	22252-000450	RING, 45	1	1						
42	1	22252-000620	RING, 62	1	1						

Remarks

(1) L= REF.NO.11 5M/M,11-1 7M/M.

Fig.47. AUGER GEAR CASE

47 AUGER GEAR CASE



(A)=YSR1300DX
(B)=YSR1600DX
(C)=

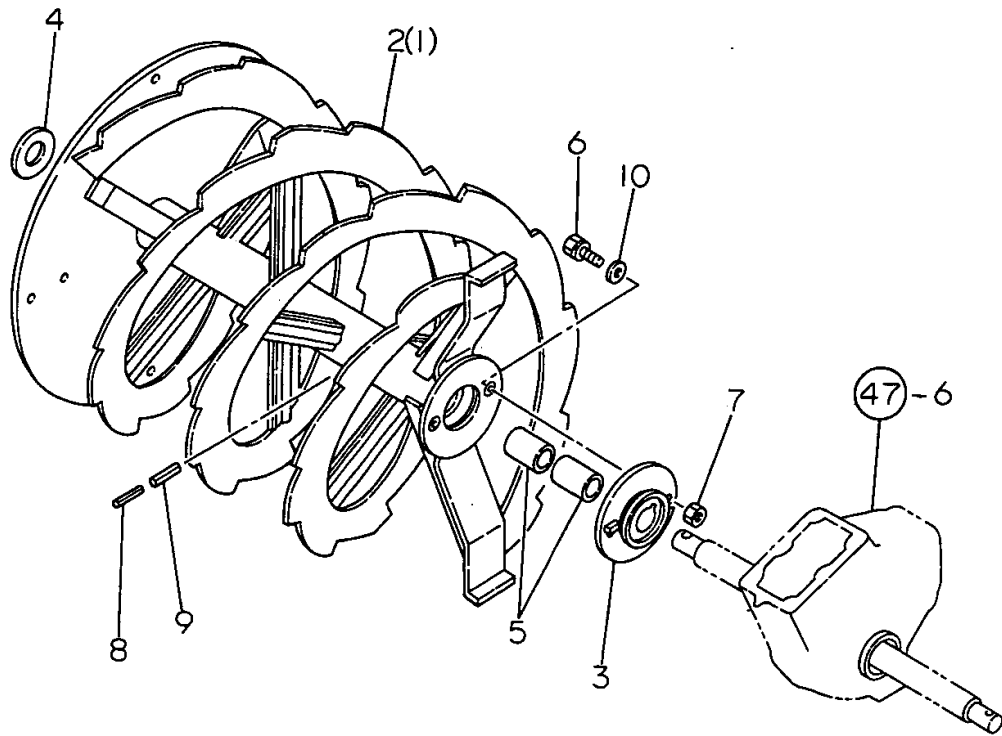
(D)=
(E)=
(F)=

No.	Lev.	Parts No.	Description	Q'ty						I	R
				(A)	(B)	(C)	(D)	(E)	(F)		
43	1	24101-060054	BEARING, BALL 6005	1	1						
44	1	24101-062054	BEARING, BALL 6205	3	3						
44-1	1	24101-062054	BEARING, BALL 6205	2	2						K
		(A=F207236) (B=F207283)									
45	1	24101-062074	BEARING, BALL 6207	2	2						
46	1	24104-063054	BEARING, BALL 6305UU	2	2						
47	1	1N1600-72000	KEY 7X7X33 SS,FEATHR	2	2						
48	1	1N1600-73550	KEY 7X7X40,STRAIGHT	1	1						
49	1	1N1600-72040	KEY 8X7X30 RR,FEATHR	1	1						
50	1	1N1600-72090	KEY 10X8X40RR,SUNK	2	2						
51	1	1N1600-72110	KEY 12X8X32 SR,SUNK	1	1						
52	1	24421-254008	SEAL, OIL TC254008	1	1						
53	1	24421-355511	SEAL, OIL TC355511	2	2						
54	1	1N1956-39010	V-PULLEY 204B	1	1						
55	1	1N1600-73580	WASHER 8X45X3.2,R	1	1						
56	1	26013-080204	BOLT M 8X 20	1	1						
57	1	22137-080000	WASHER, 8	1	1						
58	1	26013-080304	BOLT M 8X 30	1	1						
59	1	1N1763-29050	WASHER 28X40X2,THRST	1	1						W
		(A=F207236) (B=F207283)									
60	1	22242-000280	RING, 28	1	1						W
		(A=F207236) (B=F207283)									
61	1	1N1600-77730	BEARING 60/28	1	1						W
		(A=F207236) (B=F207283)									

Remarks
(1) L= REF.NO.11 5M/M,11-1 7M/M.

Fig.48. AUGER

48 . AUGER



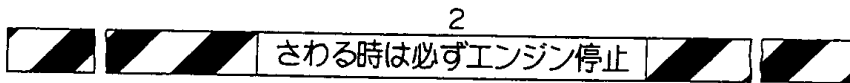
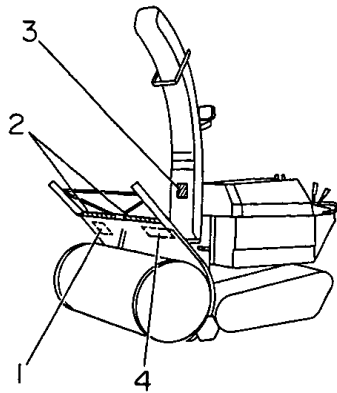
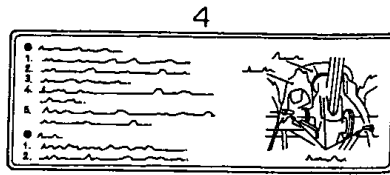
(A)=YSR1300DX
(B)=YSR1600DX
(C)=

(D)=
(E)=
(F)=

No.	Lev.	Parts No.	Description	Q'ty						I	R
				(A)	(B)	(C)	(D)	(E)	(F)		
1	1	1N1953-51000	AUGER L COMPL.	1	1						
2	1	1N1953-52000	AUGER R COMPL.	1	1						
3	1	1N1863-55000	FLANGE CMP,AUGER SHR	2	2						
4	1	1N1639-19260	WASHER,THRUST	2	2						
5	1	1N1639-19050	BUSH ML3550,M LINER	4	4						
6	1	26013-100304	BOLT, M10X 30	2	2						
7	1	26707-100002	NUT, M10	2	2						
8	1	1N1600-72790	NUT 8,HEX.HD.SQUARE	2	2						
9	1	22351-010045	SPRING PIN 1.0X45	2	2						
10	1	22137-100000	WASHER, 10	2	2						

Fig.49. LABELS

49. LABELS



N053165

(A)=YSR1300DX
(B)=YSR1600DX
(C)=

(D)=
(E)=
(F)=

No.	Lev.	Parts No.	Description	Q'ty						I	R
				(A)	(B)	(C)	(D)	(E)	(F)		
1	1	1N1937-99120	MARK,AUGER SAFETY	1	1						
2	1	1N1937-99090	MARK,SNW.REM.SAFETY	2	2						
2-1	1	1N1837-99030	MARK,SNOW REM.CAUTION	2	2						R
				(A)=FXXXXXX	(B)=FXXXXXX						
3	1	1N1869-18060	MARK,SAFETY	1	1						
4	1	1N1937-99100	MARK,SAFE.BOLT CHG.	1	1						

Parts No. Index

Parts No.	Fig. No.	Ref. No.
101720-55750	3	18
102103-55520	3	11
104200-55321	3	14
104200-55330	3	15
104200-55341	3	19 B
104200-55750	3	19
104500-55710	3	10
105312-55600	3	9
105312-55700	3	17
110250-55610	3	13
119260-44500	2	4
119280-49020	2	6
119288-49010	2	5
119629-49070	2	8 A
119629-49080	2	8 B
119650-77900	36	30
119650-77910	36	29
121520-77710	36	28
123682-44210	2	4 A
124064-55510	3	12
129150-49090	2	9
129150-49100	2	7
192010-24160	8	7
192110-24031	8	6
194555-61280	40	20
198360-52110	36	6
198360-52160	36	7
1A1040-26060	10	2
	13	4
1A1040-46460	32	1
	33	1
1A1040-76110	27	8
1A1050-64200	16	6
1A1070-28690	13	17
	35	7
1A1104-28230	11	6
	13	10
1A1120-61531	3	20
1A1120-61541	3	21
1A1120-71070	27	7
1A1140-58050	25	3
1A1180-59520	4	5
1A1180-83000	43	2
1A1290-82050	43	1
1A1380-46460	31	2
1A1470-20940	13	1
1C6210-12130	29	1
1E4060-26430	18	1
1E4150-99090	9	6
1E4320-99120	22	3

Parts No.	Fig. No.	Ref. No.
1E4320-99120	22	4
	23	4
	36	55
	40	12
1E6020-67240	35	32
1E6030-67030	34	3
	35	31
1E6050-58240	32	2
	33	2
1E6050-63110	25	4
1E6070-41040	5	17
1E6070-56211	11	8
1E6070-56290	12	3
1E6070-73490	32	11
1E6070-81360	3	22
1E6090-67810	35	33
1E6091-48710	13	19
1E6102-84960	3	23
	35	44
	36	54
1E6102-84970	3	33
	36	33
1E6141-68130	35	34
1E6150-56040	11	7
1E6150-61310	22	2
1E6250-73180	32	6
1E6251-35400	15	7
1E6390-95490	25	5
1E6460-03310	3	7
1E6460-03421	2	3
1E6460-73061	32	3
	33	4
1E6460-73080	32	4
	33	5
1E6460-73190	9	5
1E6460-83400	26	5
1E6460-91571	37	14
	38	3
1E6460-91572	37	14 -1
	38	3 -1
1E6460-91573	37	14 -2
	38	3 -2
1E6460-91580	37	15
	38	4
1E6472-66230	35	1
1E6480-82280	36	13
1E6480-87760	31	3
1E6511-63811	17	9
1E6511-98910	43	2 -1
1E6570-03170	3	3

Parts No.	Fig. No.	Ref. No.
1E6570-04300	1	4
1E6570-33610	26	1
1E6570-64760	17	10
1E6570-65751	26	4
1E6570-65761	21	5
	24	5
1E6570-73051	33	3
1E6570-73100	33	6
1E6570-73150	32	5
1E6570-73201	32	7
	33	7
1E6570-73300	32	9
1E6570-73350	32	10
1E6570-73700	32	12
	33	8
1E6570-73730	32	13
	33	9
1E6570-73880	32	14
	33	10
1E6650-04670	36	2
1E6650-82300	36	31
1E6650-83080	36	16 -1
1E6670-73200	32	8
1E6691-84050	36	22
1E6760-67100	34	4
1E6760-73050	33	3 -1
1E6770-03210	2	14
1E6770-91500	37	20 -1
	38	6 -1
1E6910-82500	36	32
1E6930-97300	41	8
1E8090-73300	32	9 -1
1E8090-73350	32	10 -1
1N1600-70880	47	26
1N1600-71210	46	26
1N1600-71570	46	14
1N1600-72000	47	47
1N1600-72040	47	49
1N1600-72090	47	50
1N1600-72110	47	51
1N1600-72160	46	24
1N1600-72440	47	40
1N1600-72790	48	8
1N1600-73540	47	2
1N1600-73550	47	48
1N1600-73580	47	55
1N1600-73590	47	28
1N1600-77730	47	61
1N1609-11040	46	15
1N1610-70020	47	7

Parts No.	Fig. No.	Ref. No.
1N1610-70030	47	8
1N1610-70040	47	10
1N1610-70050	47	13
1N1610-70060	47	14
1N1610-70070	47	12
1N1610-70120	47	20
1N1630-70090	45	7
1N1630-70100	45	8
1N1630-81000	45	2
1N1633-19041	47	9
1N1633-19060	47	11
1N1633-19070	47	30
1N1633-29050	47	19
1N1633-49020	47	22
1N1639-11010	47	27
1N1639-12170	45	11
1N1639-15010	47	29
1N1639-19050	48	5
1N1639-19260	48	4
1N1673-19110	47	6
1N1673-21000	45	5
1N1673-22000	45	6
1N1673-32000	46	4
1N1673-34000	46	3
1N1673-39010	46	8
1N1673-39030	46	9
1N1673-61000	47	24
1N1678-35000	46	28
1N1683-19010	46	1
1N1730-28011	13	2
1N1730-28100	13	3
1N1730-28110	13	5
1N1730-28130	13	6
1N1730-28140	13	7
1N1730-28150	13	8
1N1730-28220	13	9
1N1730-28250	13	11
1N1730-28410	13	12
1N1730-28420	13	13
1N1730-28500	13	14
1N1730-28620	13	15
1N1730-31400	16	4
1N1730-31451	16	5
1N1730-32100	21	1
1N1730-32110	17	8
1N1730-32271	18	5
1N1730-32450	18	9
1N1730-32470	18	12
1N1730-32570	18	13
1N1730-33120	24	2

Parts No. Index

Parts No.	Fig. No.	Ref. No.
1N1730-33511	25	1
1N1730-33512	25	1 -1
1N1730-34110	27	6
1N1730-51071	36	5
1N1730-51131	36	11
1N1730-51701	36	27 -1
1N1730-61090	40	3
1N1730-61190	40	22
1N1730-61380	36	56
1N1730-67073	41	2
1N1730-67151	41	5
1N1740-21260	8	4
1N1740-21360	9	4
1N1740-23030	10	5
1N1740-23170	11	1
1N1740-23180	11	2
1N1740-23190	11	3
1N1740-23350	12	1
1N1740-23370	12	2
1N1740-23480	10	11
1N1740-28000	14	1
1N1740-31511	17	1
1N1740-31551	17	2
1N1740-31580	17	3
1N1740-31770	17	5
1N1740-31850	17	7
	21	12
	24	12
1N1740-32071	18	2
1N1740-32151	18	3
1N1740-32190	18	4
1N1740-32400	18	6
1N1740-32410	18	7
1N1740-32421	18	8
1N1740-32660	10	14
1N1740-32661	10	14 -1
1N1740-36250	28	2
1N1740-37170	20	4
1N1740-41020	35	9
1N1740-41110	35	10
1N1740-41310	35	12
1N1740-41320	35	13
1N1740-41330	35	14
1N1740-41340	35	15
1N1740-41350	35	16
1N1740-51200	36	9
1N1740-51410	36	50
1N1740-79110	42	1
1N1763-19060	47	11 -1
1N1763-29010	47	15

Parts No.	Fig. No.	Ref. No.
1N1763-29011	47	15 -1
1N1763-29020	47	16
1N1763-29030	47	17
1N1763-29040	47	18
1N1763-29050	47	59
1N1763-33000	46	5
1N1763-34000	46	6
1N1763-35000	46	10
1N1763-36000	46	11
1N1763-39010	46	12
1N1763-39020	46	13
1N1763-39030	46	11 -1
1N1763-99010	47	31
1N1803-99010	45	9
1N1803-99020	45	10
1N1837-99030	49	2 -1
1N1863-31000	46	2
1N1863-55000	48	3
1N1869-18060	49	3
1N1910-00100	1	1
1N1910-00510	1	2
1N1910-02210	2	1
1N1910-02260	2	2
1N1910-02400	36	1
1N1910-03010	3	1
1N1910-03110	3	2
1N1910-03200	3	4
1N1910-03222	3	5
1N1910-03260	3	6
1N1910-03310	3	8
1N1910-05100	4	1
1N1910-05150	4	2
1N1910-12010	5	1
1N1910-12110	5	2
1N1910-12160	5	12
1N1910-12220	36	59
1N1910-12250	5	4
1N1910-12300	5	5
1N1910-12350	5	6
1N1910-21010	6	1
1N1910-21020	6	2
1N1910-21030	6	3
1N1910-21100	7	1
1N1910-21200	8	1
1N1910-21210	8	2
1N1910-21220	8	3
1N1910-21240	8	5
1N1910-21300	9	1
1N1910-21310	9	2
1N1910-21320	9	3

Parts No.	Fig. No.	Ref. No.
1N1910-23000	10	1
1N1910-23010	10	4
1N1910-23040	10	6
1N1910-23050	10	7
1N1910-23090	10	8
1N1910-23150	10	10
1N1910-23200	11	4
1N1910-23320	11	5
1N1910-23510	10	12
1N1910-28050	14	2
1N1910-28051	14	2 -1
1N1910-28110	14	6
1N1910-31000	15	1
1N1910-31050	15	3
1N1910-31080	15	4
1N1910-31100	15	5
1N1910-31150	15	6
1N1910-31250	16	1
1N1910-31320	16	2
1N1910-31350	16	3
1N1910-31710	17	4
1N1910-31810	17	6
1N1910-32110	17	8 -1
1N1910-32120	21	2 -1
	24	1 -1
1N1910-32200	21	3
1N1910-32250	21	4
	24	4
1N1910-32270	21	2
	24	1
1N1910-32460	18	10
1N1910-32461	18	10 -1
1N1910-32510	22	1
1N1910-32650	23	1
1N1910-32670	36	51
1N1910-32710	23	2
1N1910-32750	23	3
1N1910-32850	20	1
1N1910-32890	20	2
1N1910-32910	20	3
1N1910-33200	24	3
1N1910-33550	25	2
1N1910-34010	26	2
1N1910-34040	26	3
1N1910-34060	27	2
1N1910-34070	27	3
1N1910-34080	27	4
1N1910-34090	27	5
1N1910-36010	28	1
1N1910-36810	28	3

Parts No.	Fig. No.	Ref. No.
1N1910-37010	19	1
1N1910-38010	29	2
1N1910-38150	29	3
1N1910-38181	31	1
1N1910-38210	30	1
1N1910-42010	34	1
1N1910-42310	34	2
1N1910-42510	34	8
1N1910-42710	34	9
1N1910-42720	34	11
1N1910-45010	35	11
1N1910-45030	35	22
1N1910-45050	35	49
1N1910-45110	35	23
1N1910-45120	35	24
1N1910-45130	35	25
1N1910-45140	35	26
1N1910-45150	35	27
1N1910-45160	35	28
1N1910-45170	35	29
1N1910-45210	35	47
1N1910-45310	35	48
1N1910-45540	35	2
1N1910-45560	35	30
1N1910-45570	35	3
1N1910-45580	35	4
1N1910-51010	36	3
1N1910-51050	36	4
1N1910-51150	36	8
1N1910-51200	36	10
1N1910-51251	36	12
1N1910-51260	36	14
1N1910-51300	36	18
1N1910-51320	36	19
1N1910-51340	36	20
1N1910-51350	36	21
1N1910-51400	36	15
1N1910-51411	36	16
1N1910-51420	36	17
1N1910-51430	36	23
1N1910-51440	36	24
1N1910-51450	36	25
1N1910-51511	36	26
1N1910-51700	36	27
1N1910-61010	40	1
1N1910-61070	40	2
1N1910-61110	38	1
1N1910-61180	40	4
1N1910-61190	40	5
1N1910-61210	39	1

Parts No. Index

Parts No.	Fig. No.	Ref. No.
1N1910-61290	40	23
1N1910-61310	37	2
1N1910-61410	37	3
1N1910-61500	37	4
1N1910-61550	37	5
1N1910-61660	37	6
1N1910-61690	37	8
1N1910-61691	37	8 -1
1N1910-61700	37	7
1N1910-61720	37	9
1N1910-61721	37	9 -1
1N1910-61750	40	6
1N1910-61770	40	7
1N1910-61780	40	8
1N1910-61830	40	9
1N1910-61870	37	10
1N1910-61880	37	11
1N1910-61900	40	11
1N1910-61950	37	12
	38	2
1N1910-61960	37	13
1N1910-67050	41	1
1N1910-67060	41	11
1N1910-67070	41	7
1N1910-67110	41	3
1N1910-67150	41	6
1N1910-67170	41	9
1N1910-67180	41	10
1N1910-82100	44	1
1N1920-38180	31	1 A
1N1920-38210	30	2
1N1920-67110	41	4
1N1937-99090	49	2
1N1937-99100	49	4
1N1937-99120	49	1
1N1953-11000	45	1
1N1953-12000	47	1
1N1953-14000	47	2 -1
1N1953-19010	45	3
1N1953-19020	45	4
1N1953-19030	47	3
1N1953-19040	47	4
1N1953-19050	47	5
1N1953-31000	46	7
1N1953-49010	47	21
1N1953-49030	47	23
1N1953-51000	48	1
1N1953-52000	48	2
1N1953-62000	47	25
1N1956-39010	47	54

Parts No.	Fig. No.	Ref. No.
1N1957-59010	46	25
22137-040000	35	17
22137-050000	37	16
	38	5
22137-060000	26	6
	36	34
	37	17
22137-080000	3	24
	15	8
	17	11
	18	14
	20	5
		6
	21	6
	24	6
	25	6
	36	35
	40	13
	45	19
	46	20
	47	57
22137-100000	21	7
	24	7
	40	19
	46	21
	48	10
22137-120000	15	9
	18	15
	25	7
	26	7
22137-140000	34	5
22137-200000	27	1
22217-050000	13	20
	36	36
	40	14
22217-060000	35	35
		50
	36	37
		38
		39
22217-080000	1	6
	3	25
	5	7
		8
	10	15
	13	21
	36	40
	45	20
	46	22
22217-100000	47	39

Parts No.	Fig. No.	Ref. No.
22217-120000	29	4
	42	2
22242-000120	15	10
	18	16
		17
	26	8
22242-000150	15	11
	16	7
22242-000170	5	9
	13	22
22242-000200	8	11
	27	9
22242-000220	6	4
22242-000280	47	60
22242-000320	18	18
22242-000601	29	5
22252-000421	8	8
	32	15
	33	11
22252-000450	47	41
22252-000470	13	23
22252-000471	8	10
	9	7
22252-000520	47	31 -1
22252-000620	47	42
22351-010045	48	9
22351-030025	46	27
22351-040025	27	10
22351-050025	18	19
22351-060025	15	12
	16	8
22360-130000	17	12
		13
22372-060000	26	9
	37	18
22372-080000	15	13
	17	14
	18	20
	21	8
	24	8
	25	8
	40	16
22372-100000	21	9
	24	9
	40	15
22372-120000	26	10
22417-200200	36	41
22417-200250	25	9
22417-250160	46	23
22417-250200	20	7

Parts No.	Fig. No.	Ref. No.
22417-250200	20	8
22417-320400	34	10
		12
22417-400320	34	6
22451-100100	16	12
22487-060240	37	19
22487-100450	21	10
	24	10
22487-100500	40	10
22550-050150	5	10
	14	3
22551-050251	14	3 -1
22857-500120	37	20
	38	6
23000-013000	2	10
	3	26
23000-060000	1	5
23010-011000	3	27
23010-038000	2	11
23080-008000	3	28
23102-080021	35	36
23169-080021	35	37
23414-200026	35	38
23418-060000	3	19 A
23418-200000	35	39
23490-200002	10	13
23871-020000	35	46
24101-060044	32	16
	33	12
24101-060054	9	8
	47	43
24101-062024	6	5
24101-062034	7	2
24101-062044	8	9
	13	24
24101-062054	9	9
	47	44
		44 -1
24101-062074	47	45
24101-063034	6	6
24102-062024	16	9
24104-063054	47	46
24190-100001	11	9
24311-000040	35	18
24311-000060	35	5
24311-000110	35	19
24311-000125	35	20
24311-000140	11	10
24311-000160	13	18
	35	8

Parts No. Index

Parts No.	Fig. No.	Ref. No.
24311-000180	11	11
24311-000200	35	51
24311-240100	3	16
24321-001200	35	40
24341-000550	10	17
24421-254008	13	25
	47	52
24421-254708	13	26
24421-304708	9	10
24421-355511	47	53
24550-012100	15	2
24550-012200	18	11
24550-032400	10	9
24761-060000	46	30
25123-003201	5	11
26013-080124	46	29
26013-080164	45	14
	46	17
26013-080202	5	9 -1
	46	18
26013-080204	45	15
	47	56
26013-080252	1	3
26013-080254	45	16
	47	34
26013-080304	47	58
26013-100202	4	3
		4
	29	6
26013-100252	28	4
	47	36
26013-100254	45	17
	47	35
26013-100302	31	4
26013-100304	48	6
26013-120252	5	13
26016-060124	18	21
26016-060162	11	12
26016-060164	22	5
	23	6
26016-060202	28	5
26016-080164	34	7
	35	41
26016-080204	37	25
		26
26016-080252	14	4
26016-080254	18	22
26016-080354	35	42
26016-100254	10	18
		19

Parts No.	Fig. No.	Ref. No.
26016-100254	10	20
26018-060164	27	11
	36	42
		43
		52
	37	21
		22
		23
		24
		27
	39	2
	40	17
		21
26018-080162	1	7
26018-080164	2	12
		13
	36	44
26018-080204	3	29
		30
		31
	14	7
	16	10
	18	23
	19	2
	36	57
		58
26018-080304	44	3
26018-100304	44	4
26027-100102	47	32
26033-060162	36	53
26043-100302	32	17
	33	13
26107-080252	13	27
26116-050252	13	28
26116-080202	46	16
26116-081202	10	22
26116-120402	42	3
26116-120502	29	7
26117-050102	25	13
	40	18
26117-050162	36	45
26117-060102	42	4
26117-060352	25	10
26117-080162	45	12
26117-080252	45	13
26117-080702	3	32
26117-080802	5	15
	10	21
26117-081102	10	25
26117-081302	10	23

Parts No.	Fig. No.	Ref. No.
26117-100302	47	33
26226-080202	10	3
26347-040002	13	29
	27	12
26347-080002	18	26
26450-050450	35	10 A
26450-060202	35	43
		52
26557-040252	27	13
26577-040082	16	11
26607-100002	47	38
26707-080002	44	5
	47	37
26707-100002	44	6
	48	7
26717-060002	25	11
	36	46
		47
		48
	42	5
26717-080002	1	8
	5	16
	10	24
	12	4
	13	30
	14	5
	17	15
		15 -1
	18	24
		24 -1
	21	11
		11 -1
	24	11
		11 -1
	36	49
	45	18
	46	19
26717-120002	29	8
	32	18
26776-140002	35	21
26837-100002	25	12
26979-080102	18	25
27260-470000	10	26
28110-100120	43	3
28110-120140	43	4
28110-170190	43	5
28227-171400	43	6
7A1040-48070	10	16
	35	45
7A1070-28690	13	16

Parts No.	Fig. No.	Ref. No.
7A1070-28690	35	6
7E4133-99290	44	2
933168-04590	20	9